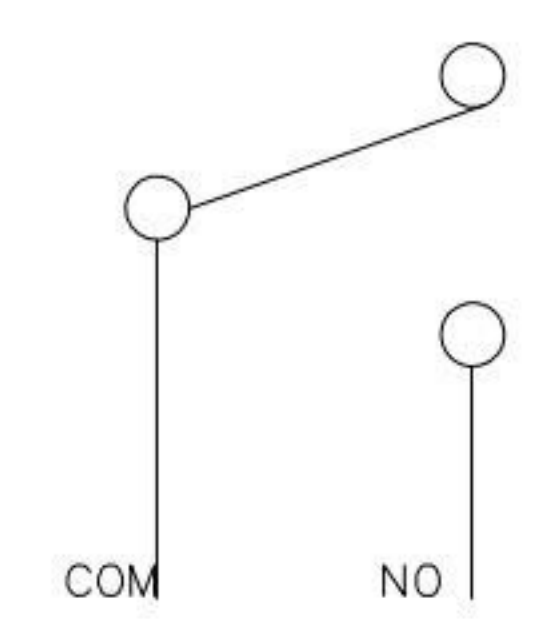
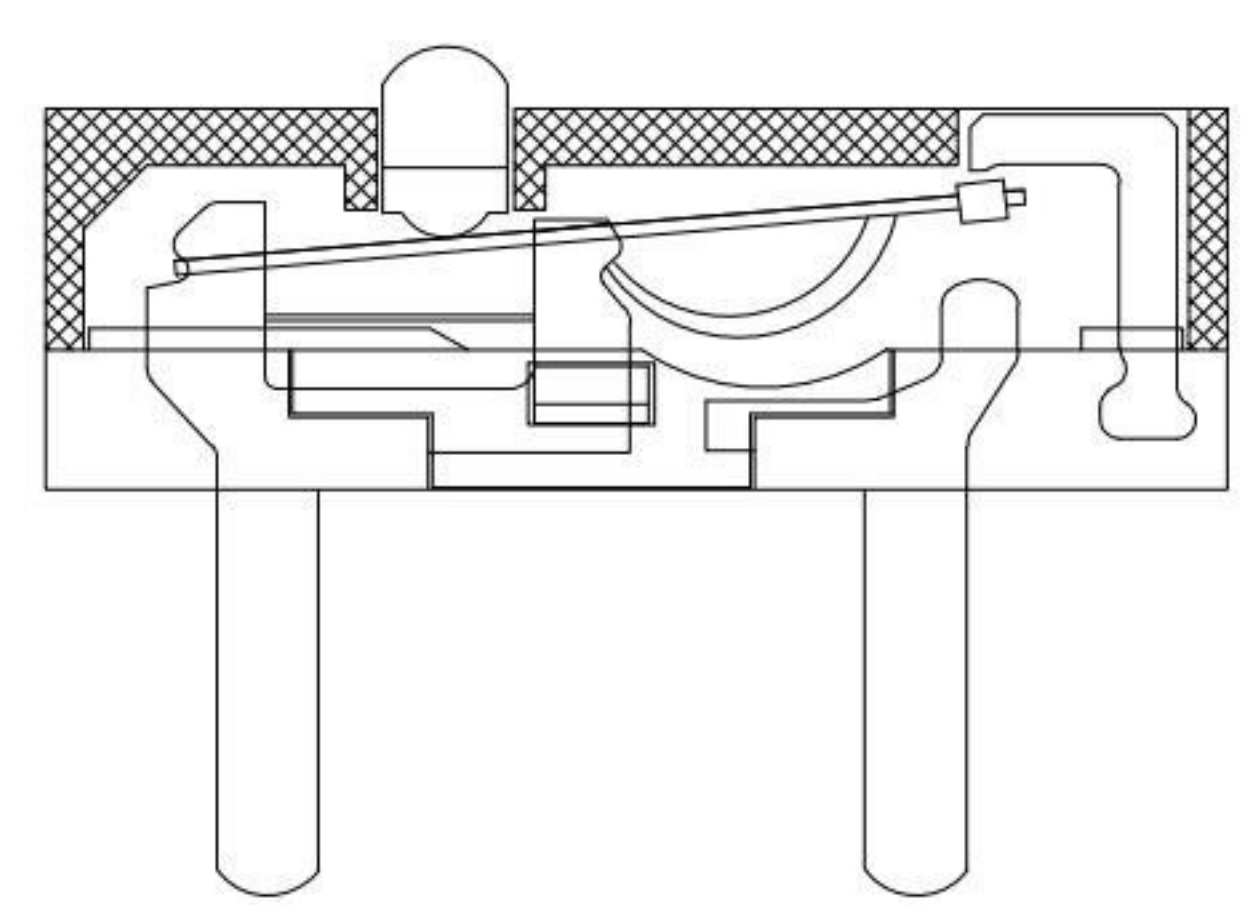
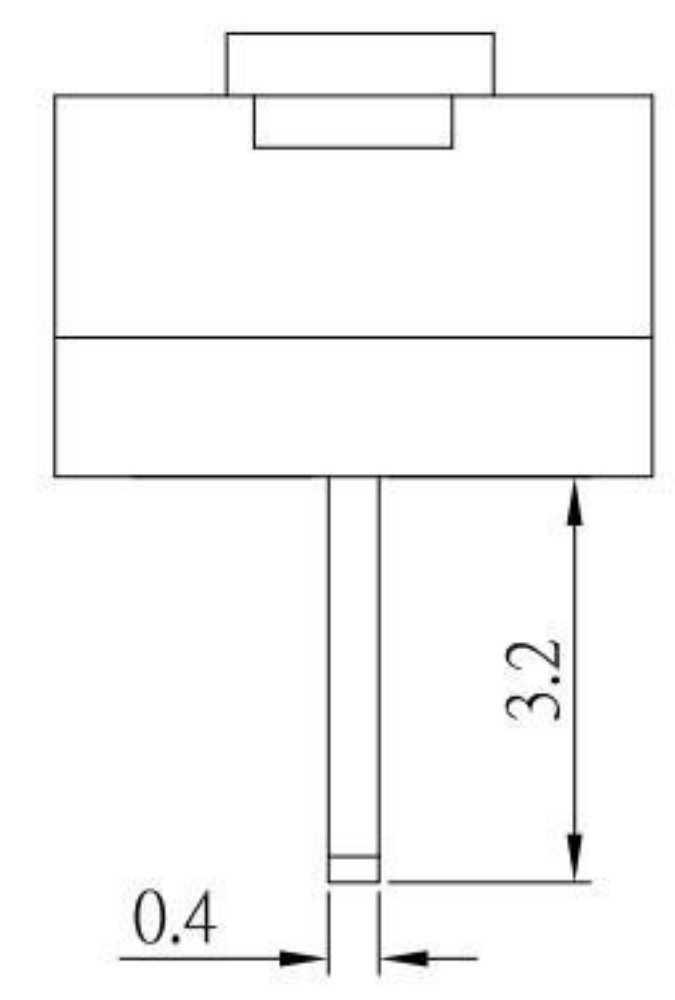
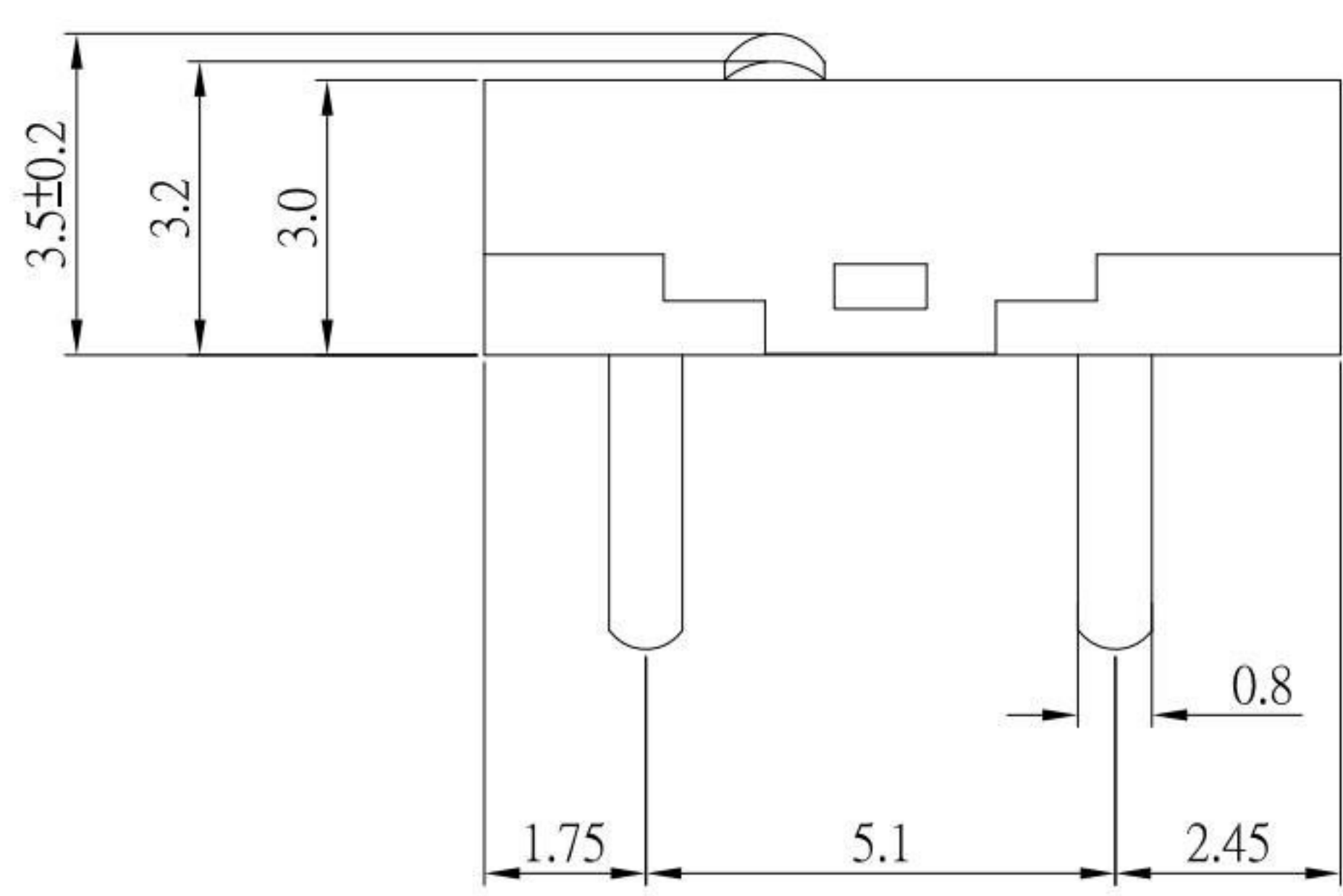


PCB LAYOUT



SCHEMATIC

SPECIFICATIONS

1. Rating : DC 12V 50mA
2. Contact Resistance : 100mΩ Max
3. Insulation Resistance : 100MΩ Min
4. Withstand Voltage : AC 250V
5. Operating Force : 70±10gf
6. Operating Position : 3.2 ±0.1 mm
7. Mechanical Life : 1,000,000 cycles Min

PART NAME	QTY.	MATERIAL	REMARK
Button	1	POM	White
Cover	1	PBT	Black
Base	1	LCP	
Contact	1	Silver Alloy	
Shrapnel	1	Copper Alloy	
Terminal	3	BRASS	Plating Silver

KSD 科斯达电子科技有限公司
 SWITCH CONNECTOR 全球 互联零组件制造企业
 KSD ELECTRONIC TECHNOLOGY Co., LTD

TOLERANCE UNLESS OTHERWISE STATED:
 Up to 5 ±0.2
 Above 5 ~ 15 ±0.3
 Above 15 ~ 30 ±0.4
 Above 30 ~ 50 ±0.5
 Angle ±0.3°

3RD. ANGEL'S

UNITS MM

DRAWN BY:	DATE	MAT'L	TITLE	SWITCH
Jack Lu	12/16/20			
CHECKED BY:	DATE	FINISH	MODLE	MICRO SWITCH
Jacky Chen	12/16/20			
APPROVED BY:	DATE	SCALE	DWG NO.	DA-P2L-0P10-S105
Tony Kao	12/16/20	1:1		
		SHEET NO.	PART NO.	DA-P2L-0P10-S105
		1 of 1		

ITEM NO.	DESCRIPTION	DRAWN	DATE
3	更新圖面	Jack	121620
2	更新料號	Jack	090517
1	新增尺寸	Jack	112613

SIZE A4
 VER R3