

NOTE

1. OPERATION CHARACTERISTICS

- 1.1 Operating Force (OF) : 60 ± 20 gf
- 1.2 Releasing Force (RF) : Min. 20 gf
- 1.3 Free Position (FP) : 3.6 ± 0.15 mm
- 1.4 Operating Position (OP) : $3.35 +0.2/-0.15$
- 1.5 Movement Differential (MD) : Max. 0.12 mm
- 1.6 Over-travel (OT) : Min 0.1 mm
- 1.7 Pre-travel (PT) : Max. 0.65 mm

2. SPECIFICATIONS

- 2.1 Contact Resistance : Max. 100 mΩ. (Initial)
Before measure the switch contact resistance, please press the switch three times on and off.
- 2.2 Dielectric Strength : 600VAC (50-60HZ)
for one minute between contacts and live-parts
- 2.3 Insulation Resistance : Min. 100 M(At 500 VDC for 1 minute)
- 2.4 Circuit Arrangement : SPST (Single pole single throw)
- 2.5 Rating : 0.1A , 30 VDC
- 2.6 Rating Load : Resistive Load
- 2.7 Operating Frequency : 120 operations per minute
- 2.8 Mechanical Service Life : Min. 5,000,000 operations.
- 2.9 Operating Frequency : Max. 120 operations per minute

3. ENVIRONMENTS

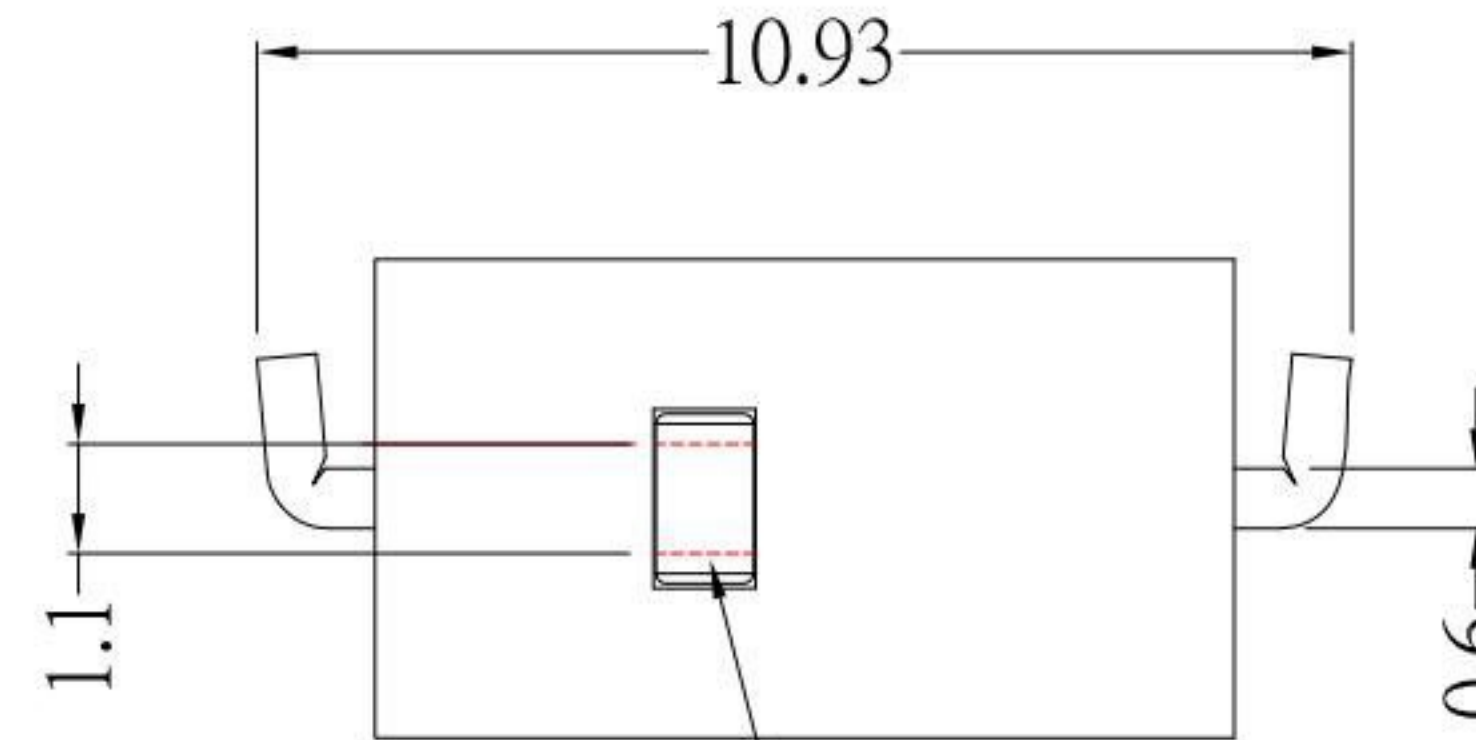
- 3.1 Operating Temperature : $-25^{\circ}\text{C} \sim 70^{\circ}\text{C}$
- 3.2 Storage Temperature : $-40^{\circ}\text{C} \sim 85^{\circ}\text{C}$
- 3.3 Storage Humidity : at 40°C , Max, 95% R.H
- 3.3 Vibration Resistance : 10~55Hz, displacement 0.75mm(p-p)
- 3.5 For SMT Temperature : Max. 250°C for 10 seconds, please see the enclosed drawing



CIRCUIT DIAGRAM

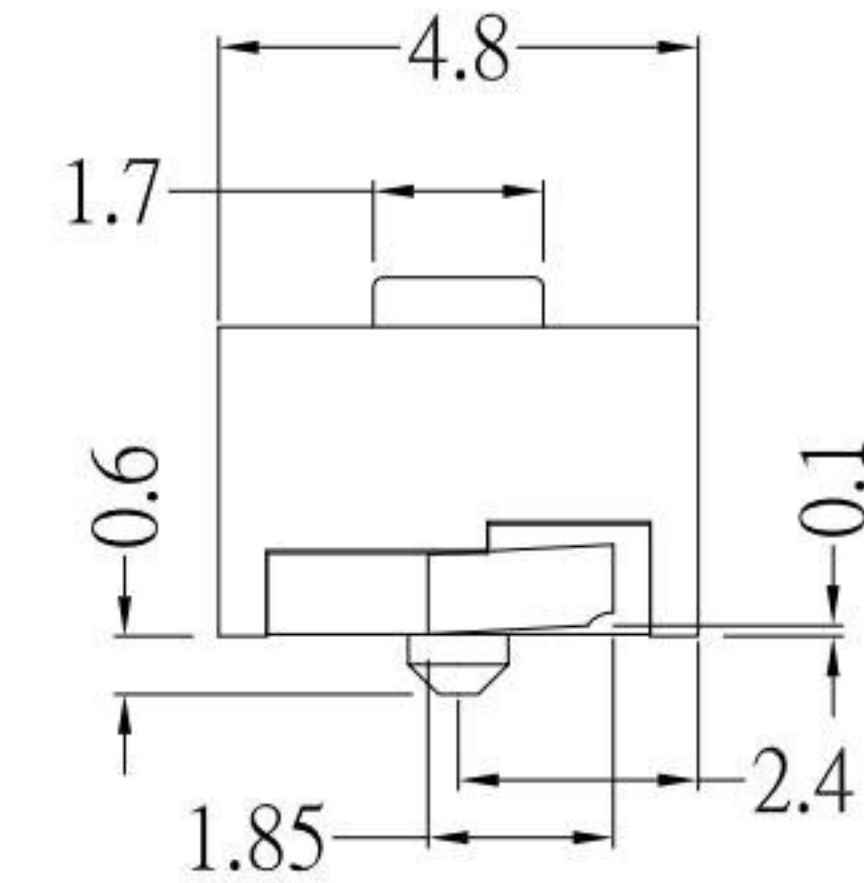
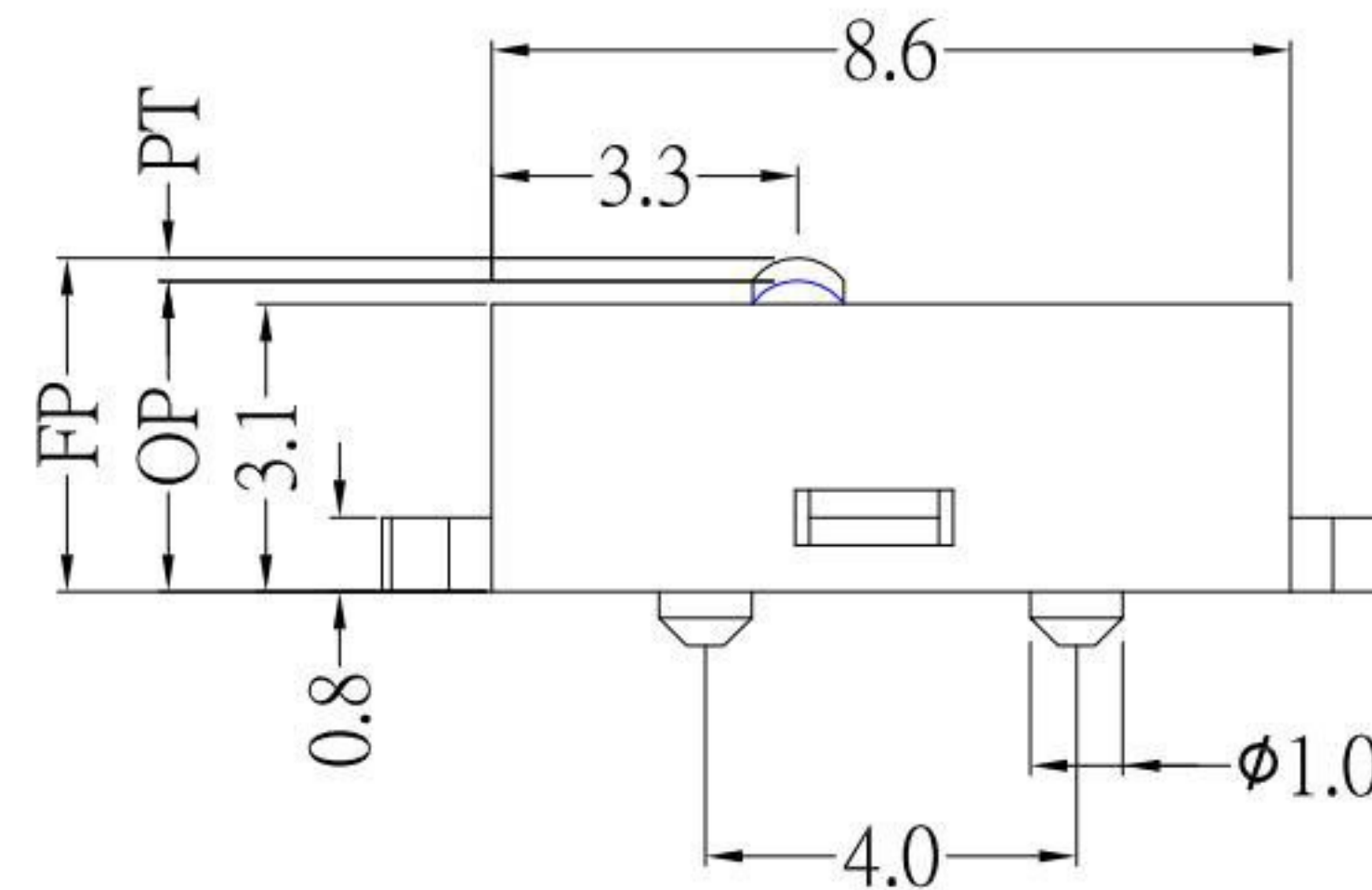
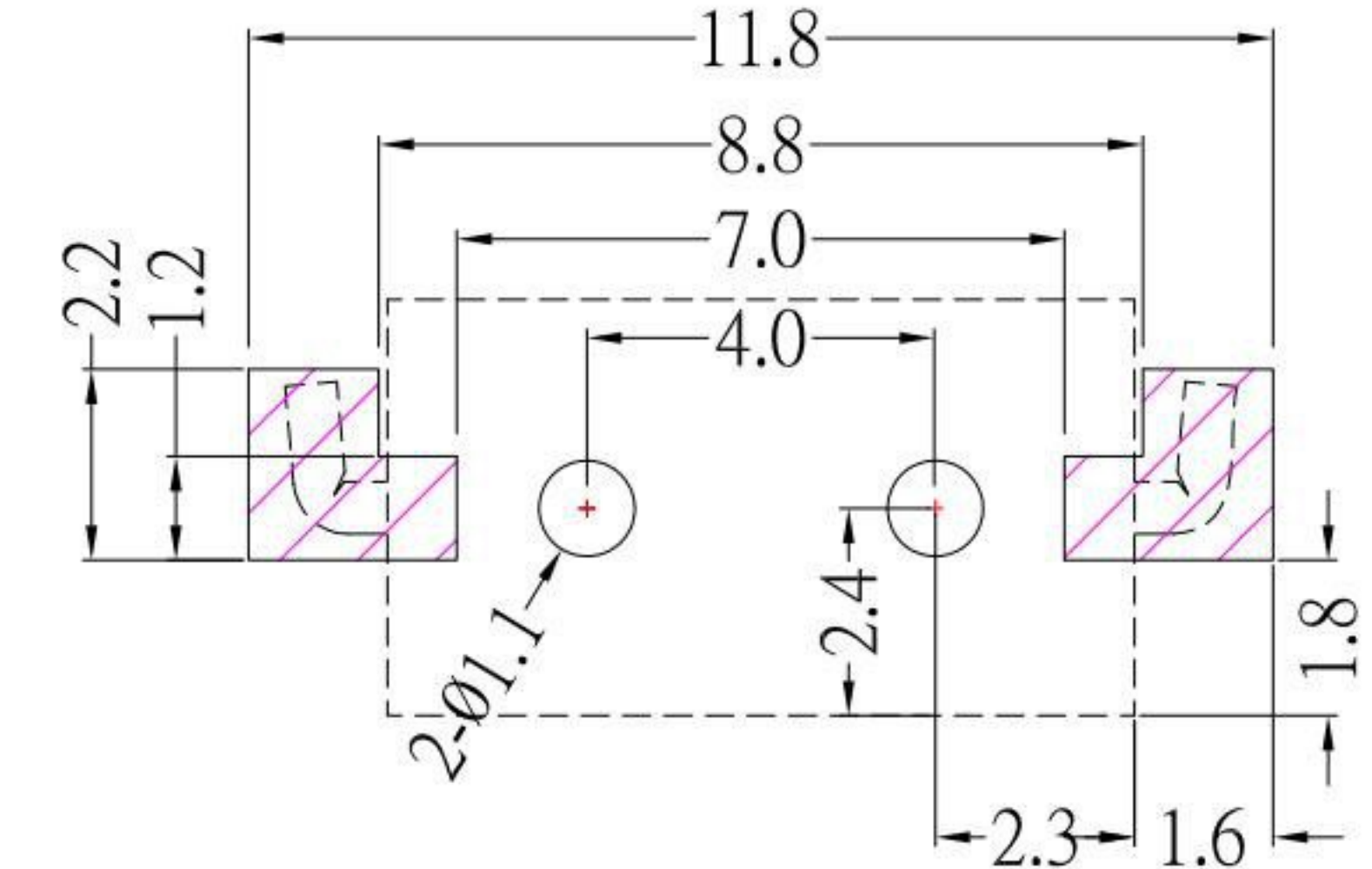


DIMENSIONS



THE SUGGESTION OF THE WORKING AREA

DIMENSIONS



				科斯达电子科技有限公司 SWITCH CONNECTOR 全球 互联零组件制造企业	DRAWN BY: Jack Lu		DATE: 11/06/15	MAT'L	TITLE: SWITCH	SWITCH	
					CHECKED BY: Jacky Chen		DATE: 11/06/15				FINISH
				APPROVED BY: Tony Kao		DATE: 11/06/15	SCALE: 1:1	DWG NO.:	DA-P2L-0T-A	SIZE: A4	
				TOLERANCE UNLESS OTHERWISE STATED:		3RD. ANGEL'S	UNITS: MM	SHEET NO.:	PART NO.:	DA-P2L-0T-A	VER: R4
ITEM NO.	DESCRIPTION	DRAWN	DATE	Up to 5	±0.2						
4	更新Rating	Jack	110615	Above 5 ~ 30	±0.3						
3	新增尺寸2.4mm及新增PCB LAYOUT外型	Jack	062014	Above 30 ~ 50	±0.4						
2	去除LOGO標示	Jack	061914	Above 50	±0.5						
1	新增LOGO標示	Jack	120213	Angle	±0.3°						