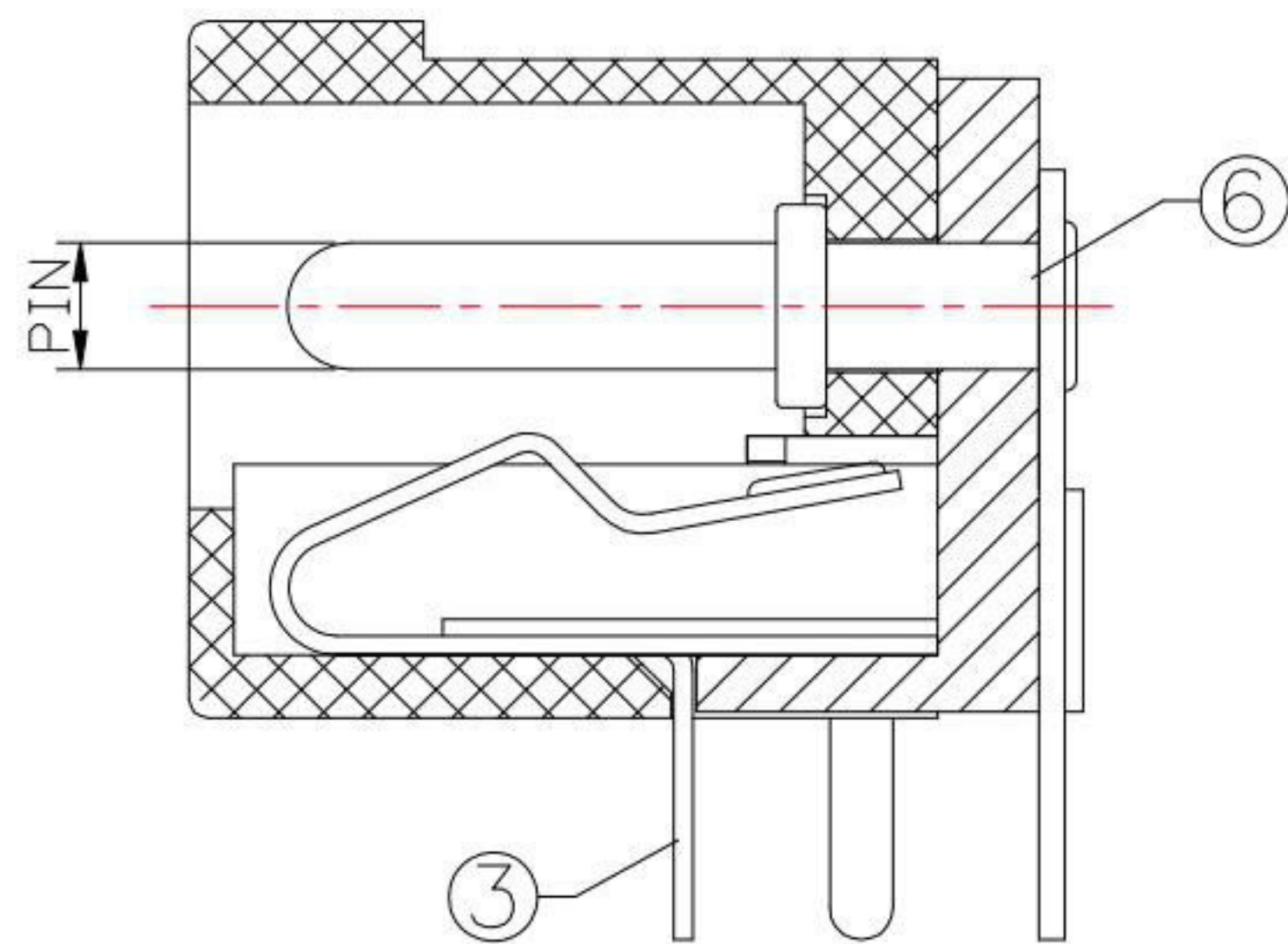


P.C.B LAYOUT  
TOP VIEW



**SPECIFICATION**

- 1. Rating : DC 30V 2.0A ;
- 2. Contact resistance :  $\leq 30m\Omega$  ;
- 3. Insulation resistance :  $\geq 100M\Omega$  ;
- 4. Withstand voltage : 500VAC ;
- 5. Insertion and extraction force : 3-30N;
- 6. life test : 5,000 cycles .

MODEL NO.	DC-002-3-x
SCHEMATIC	
CENTER PIN	Ø2.0 mm
	Ø2.5 mm

NO.	DESCRIPTION	QTY	MATERIAL	PLATING
6	PIN	1	BRASS	Ni-Plating
5	FLAT FOOT	1	BRASS	Sn-Plating
4	CURVE PIECE	1	BRASS	Sn-Plating
3	SPRING PIECE	1	PHOSPHOR BRONZE	Sn-Plating
2	COVER	1	PBT	
1	HOUSING	1	PBT	

**KSD** 科斯达电子科技有限公司  
SWITCH CONNECTOR KSD ELECTRONIC TECHNOLOGY Co., LTD  
全球 互联零组件制造企业

TOLERANCE UNLESS OTHERWISE STATED:  
 Up to 5 ±0.2  
 Above 5 ~ 15 ±0.3  
 Above 15 ~ 30 ±0.4  
 Above 30 ~ 50 ±0.5  
 Angle ±0.3°

3RD. ANGEL'S

UNITS MM

DRAWN BY:	DATE	MAT'L	TITLE	JACK
Jack Lu	04/23/19		MODLE	DC JACK
CHECKED BY:	DATE	FINISH	DWG NO.	DC-002-3-x-S124
Jacky Chen	04/23/19		PART NO.	DC-002-3-x-S124
APPROVED BY:	DATE	SCALE	1:1	
Tony Kao	04/23/19	SHEET NO.	1 of 1	

ITEM NO.	DESCRIPTION	DRAWN	DATE
1	更新樣式	Ian	042319

SIZE A4  
VER R1