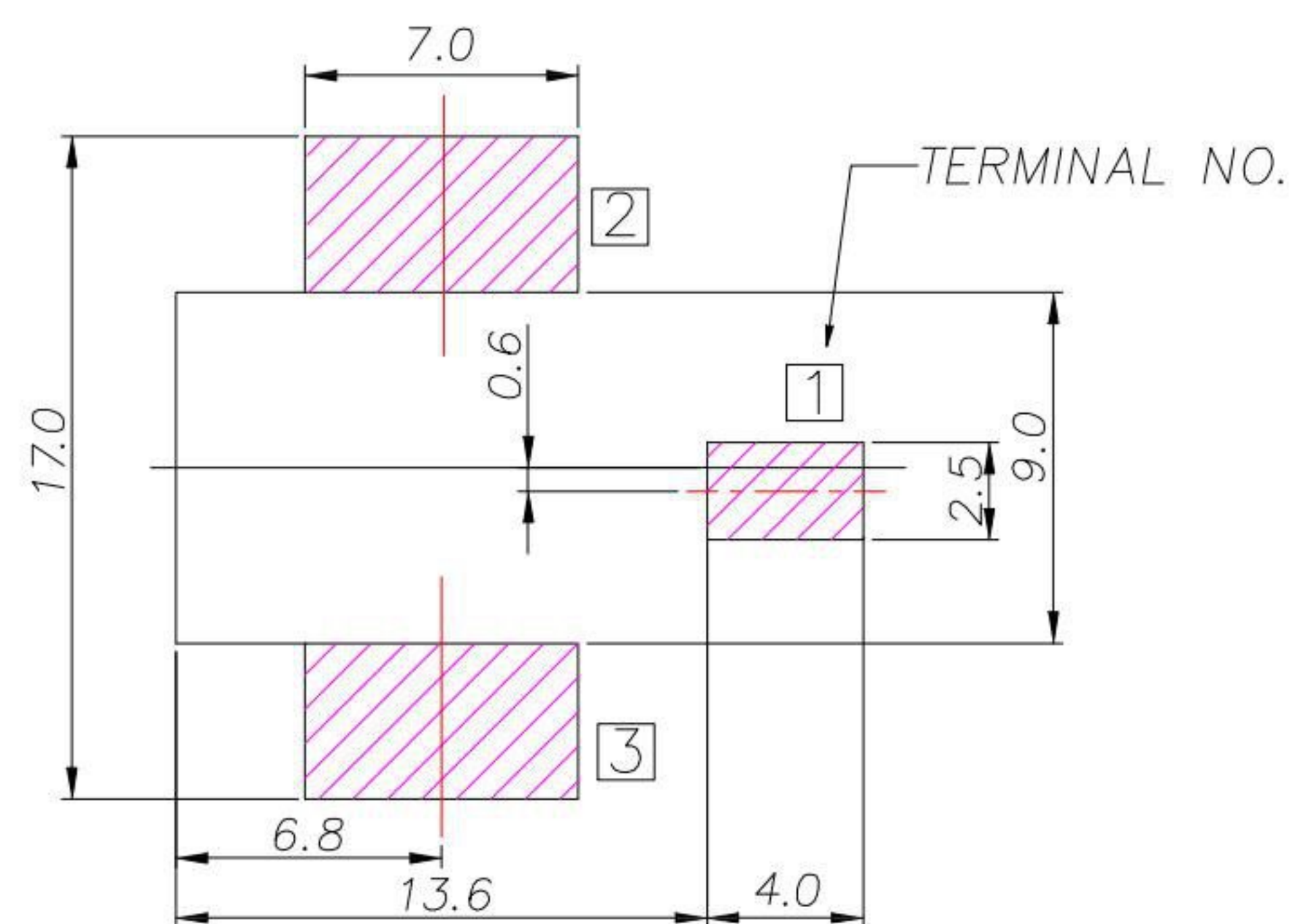


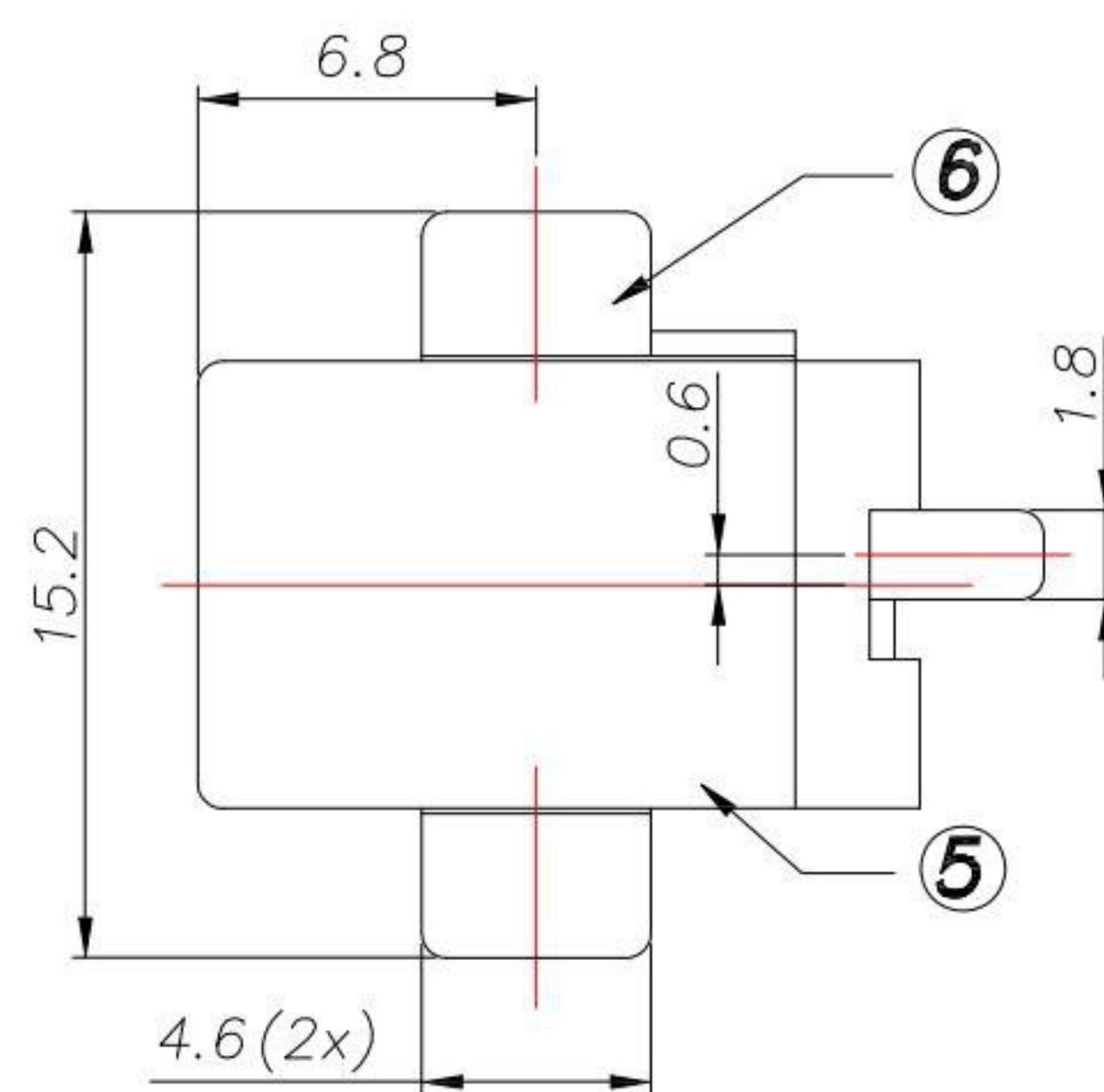
DC MATE PLUG

SPECIFICATION

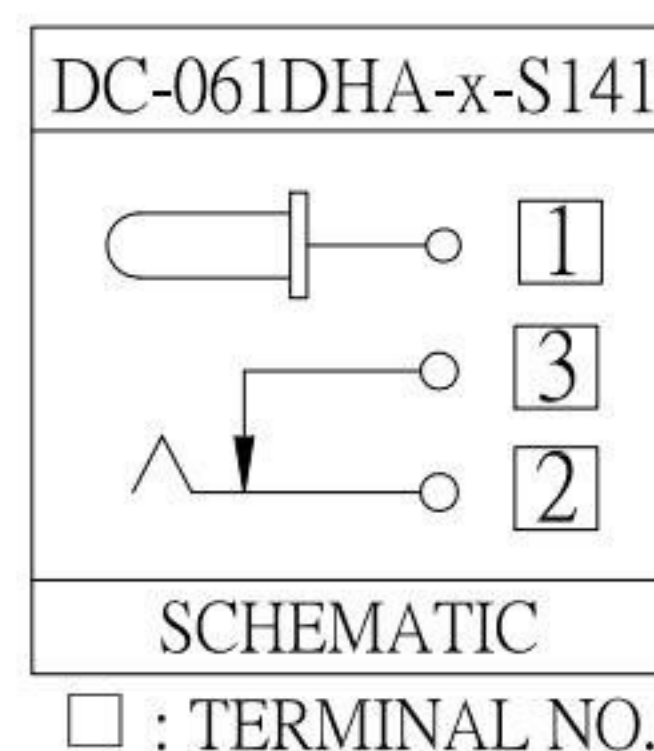
- 1. Rating : DC 16V 5.0A
- 2. Contact resistance : $\leq 30m\Omega$
- 3. Insulation resistance : $\geq 100M\Omega$
- 4. Withstand voltage : 500VAC
- 5. Insertion and extraction force : 3-30N
- 6. life test : 5,000 cycles



RECOMENDED P.C.B LAYOUT
(COPPER-SIDED VIEW)



Model NO.	DC-061DHA-2.0	DC-061DHA-2.5
CENTER PIN	$\phi 2.0$	$\phi 2.5$

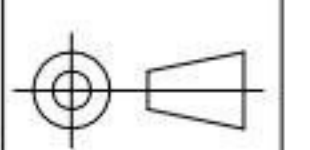


NO.	DESCRIPTION	QTY	MATERIAL	REMARK
6	Shunt terminal	1	Brass	Ag-Plating
5	Tip spring	1	Phosphor Bronze	Ag-Plating
4	Center pin terminal	1	Brass	Ag-Plating
3	Center pin	1	H59	Ni-Plating
2	Cover	1	PA9T	Black
1	Housing	1	PA9T	Black

KSD 科斯达电子科技有限公司
SWITCH CONNECTOR KSD ELECTRONIC TECHNOLOGY Co., LTD
全球 互联零组件制造企业

TOLERANCE UNLESS OTHERWISE STATED :
Up to 5 ±0.2
Above 5 ~ 15 ±0.3
Above 15 ~ 30 ±0.4
Above 30 ~ 50 ±0.5
Angle ±0.3

3RD. ANGEL'S



UNITS

MM

DRAWN BY:	DATE	MAT'L	TITLE	JACK
Jack Lu	07/16/14		JACK	
CHECKED BY:	DATE	FINISH	MODLE	DC JACK
Jacky Chen	07/16/14			
APPROVED BY:	DATE	SCALE	DWG NO.	DC-061DHA-x-S141
Tony Kao	07/16/14	1 : 1		
SHEET NO.	1 of 1	PART NO.	DC-061DHA-x-S141	

ITEM NO.	DESCRIPTION	DRAWN	DATE
2	更新料號及電壓值	Jack	071614
1	更新材質	Jack	070914