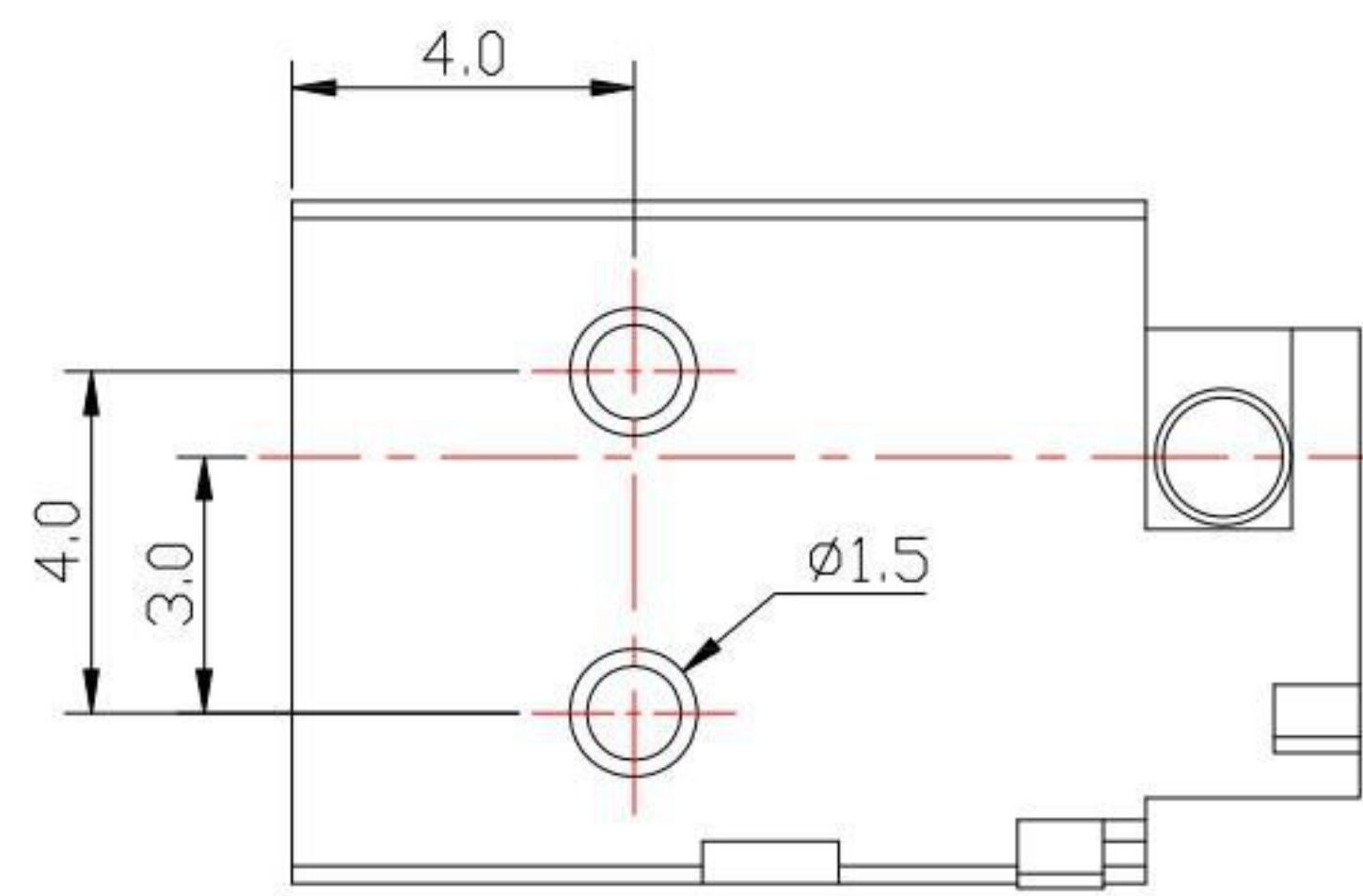


RECOMMENDED PLUG



MODEL NO.	DC-066
SCHEMATIC	

SPECIFICATION

1. Rating : DC 30V , 2.0A ;
2. Contact resistance :  $\leq 30m\Omega$  ;
3. Insulation resistance :  $\geq 100M\Omega$  ;
4. Withstand voltage : 500VAC ;
5. Insertion and extraction force : 3-30N;
6. life test : 5,000 cycles °

NO.	DESCRIPTION	QTY	MATERIAL	PLATING
4	PIN	1	BRASS	Ni-Plating
3	CURVE PIECE	1	BRASS	Ag-Plating
2	SPRING	1	PHOSPHOR BRONZE	Ag-Plating
1	HOUSING	1	PBT	

**KSD** 科斯达电子科技有限公司  
 SWITCH CONNECTOR 全球 互联零组件制造企业  
 KSD ELECTRONIC TECHNOLOGY Co., LTD

TOLERANCE UNLESS OTHERWISE STATED:  
 Up to 5 ±0.2  
 Above 5 ~ 15 ±0.3  
 Above 15 ~ 30 ±0.4  
 Above 30 ~ 50 ±0.5  
 Angle ±0.3°

3RD. ANGEL'S

UNITS MM

DRAWN BY:	DATE	MAT'L	TITLE	JACK
Jack Lu	08/29/22			
CHECKED BY:	DATE	FINISH	MODLE	DC JACK
Jacky Chen	08/29/22			
APPROVED BY:	DATE	SCALE	DWG NO.	DC-066-1.65-S124
Tony Kao	08/29/22	1:1		
		SHEET NO.	PART NO.	DC-066-1.65-S124
		1 of 1		

ITEM NO.	DESCRIPTION	DRAWN	DATE
2	更新圖面	Jack	082922
1	更新為A0版	Jack	100516

SIZE A4  
 VER R2