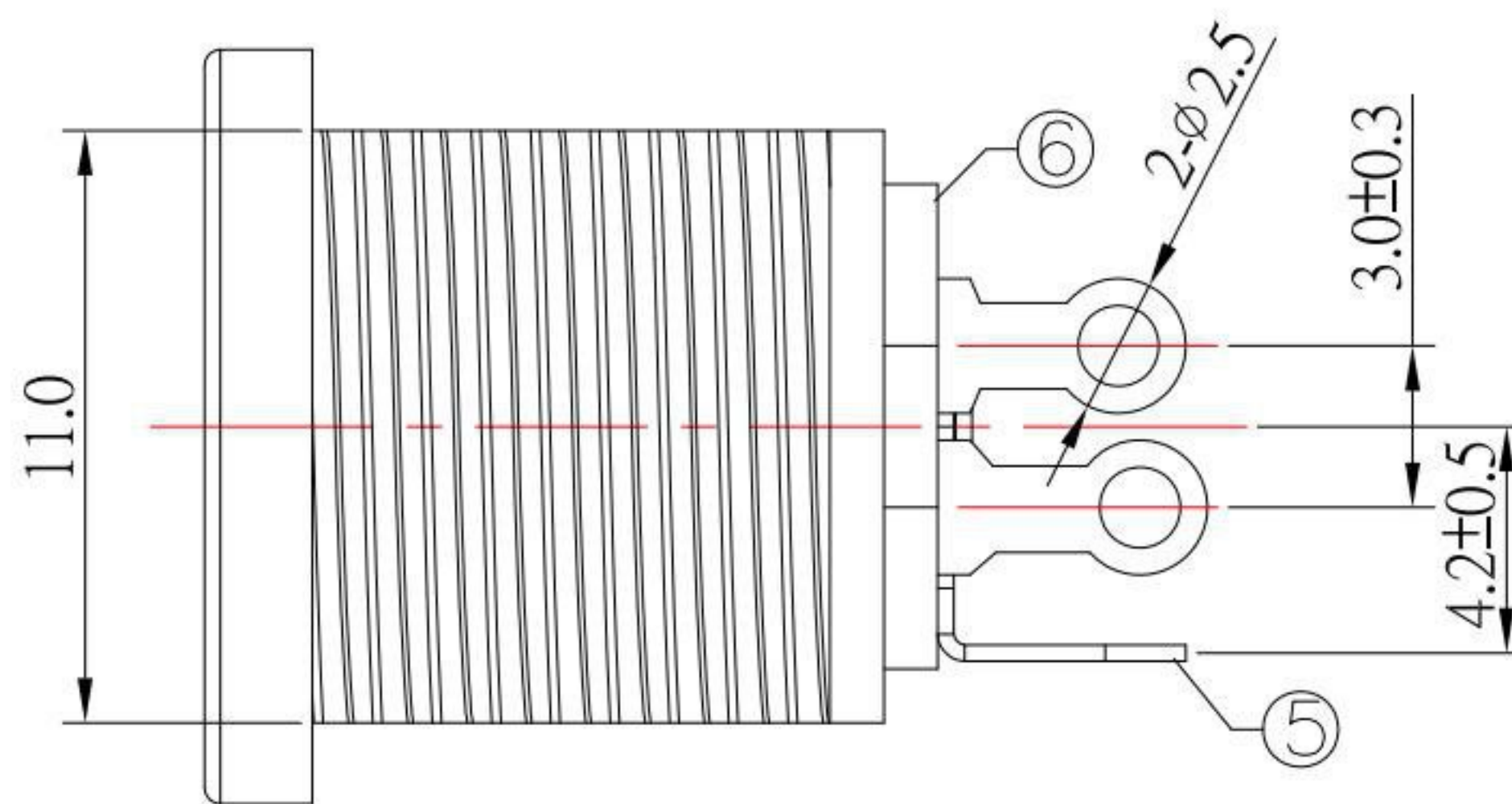
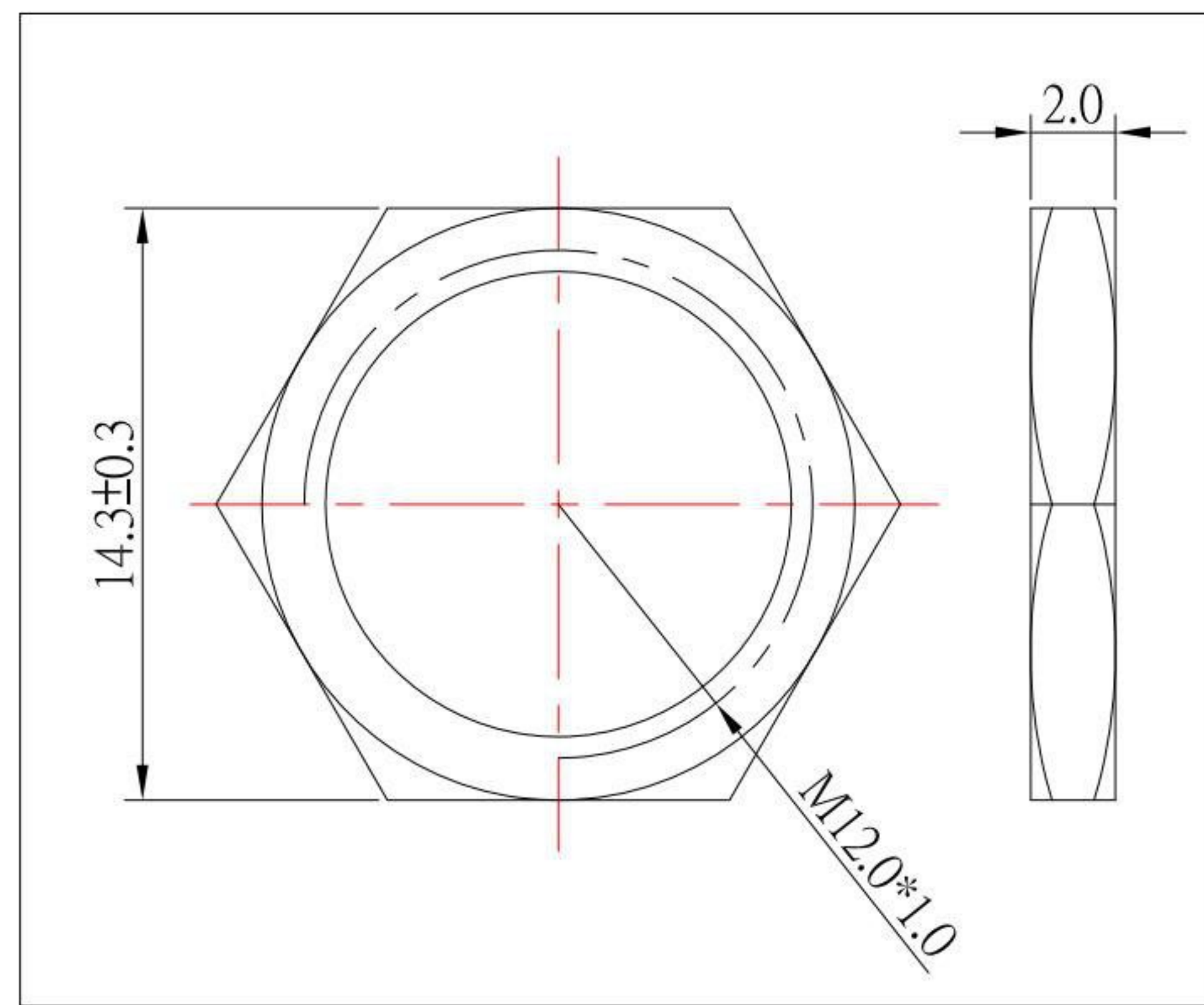


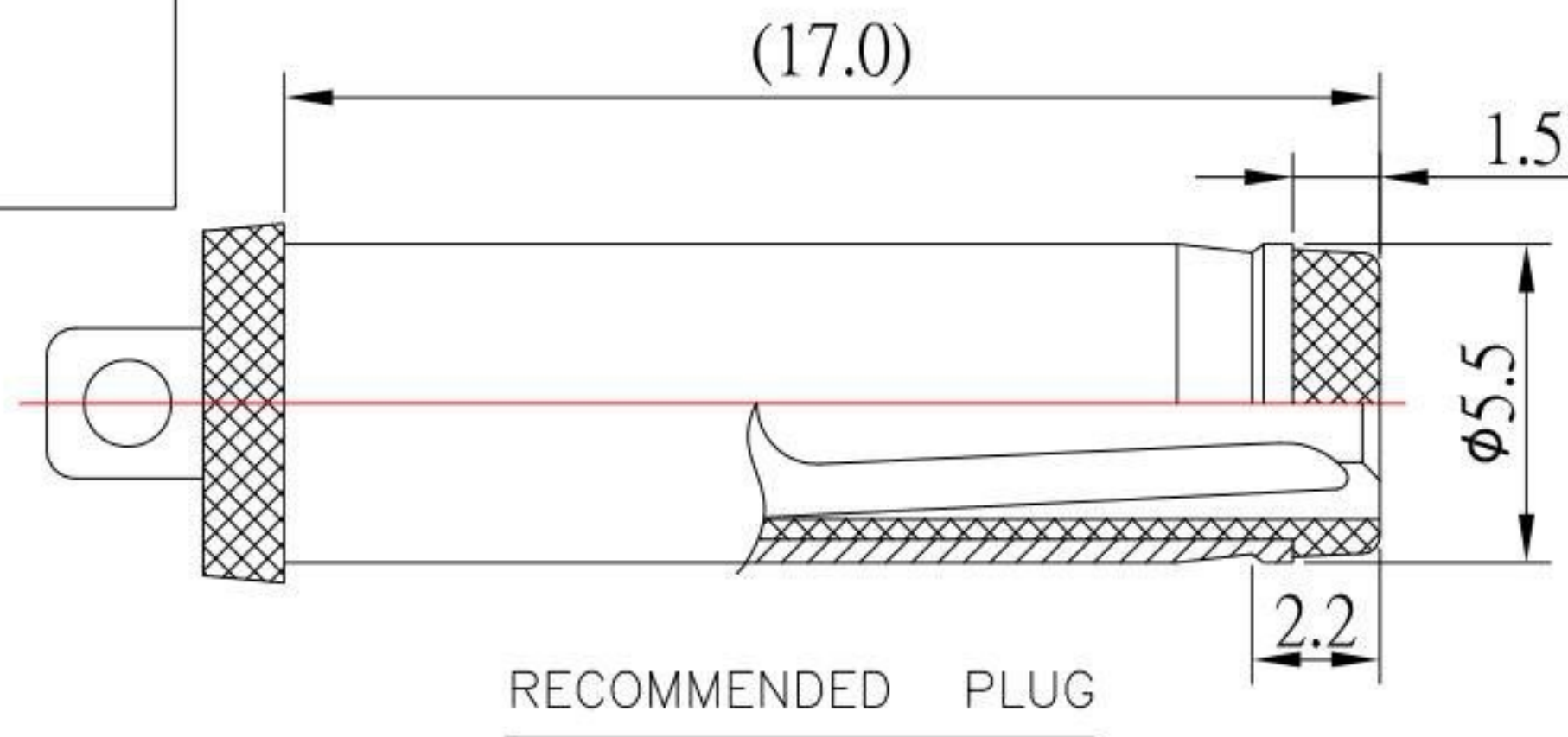
MOUNTING HOLE DIMENSION



MODEL NO.	DC-D022-x-S124
SCHEMATIC	
CENTER PIN	φ2.0mm
	φ2.5mm

SPECIFICATION

1. Rating : DC 30V , 3.0A
2. Contact resistance : ≤30mΩ
3. Insulation resistance : ≥100MΩ
4. Withstand voltage : 500VAC
5. Insertion and extraction force : 3-20N
6. life test : 5,000 cycles



RECOMMENDED PLUG

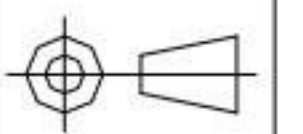
NO.	DESCRIPTION	QTY	MATERIAL	PLATING
⑦	NUT	1	H59	Ni-Plating
⑥	COVER	1	PF	
⑤	CONTACT FOOT	1	BRASS	Sn-Plating
④	PIN	1	BRASS	Ni-Plating
③	SPRING	1	PHOSPHOR BRONZE	Sn-Plating
②	FLAT PIECE	1	BRASS	Sn-Plating
①	HOUSING	1	PBT	

ITEM NO.	DESCRIPTION	DRAWN	DATE
8	更新圖面	Jack	103122
7	更新尺寸	Jack	051022
6	更新NUT材質	Jack	041922
5	更新圖面	Jack	102720
4	更新材質	Jack	050420
3	更新尺寸	Jack	121119
2	更新尺寸標示位置	Jack	082719
1	更新尺寸	Jack	080519

KSD 科斯达电子科技有限公司
 SWITCH CONNECTOR KSD ELECTRONIC TECHNOLOGY Co., LTD
 全球 互聯零組件製造企業

TOLERANCE UNLESS OTHERWISE STATED:
 Up to 5 ±0.2
 Above 5 ~ 15 ±0.3
 Above 15 ~ 30 ±0.4
 Above 30 ~ 50 ±0.5
 Angle ±0.3°

3RD. ANGEL'S



UNITS MM

DRAWN BY:	DATE	MAT'L	TITLE	JACK
Jack Lu	10/31/22		MODLE	DC JACK
CHECKED BY:	DATE	FINISH	DWG NO.	DC-D022-x-S124
Jacky Chen	10/31/22		PART NO.	DC-D022-x-S124
APPROVED BY:	DATE	SCALE	1:1	
Tony Kao	10/31/22	SHEET NO.	1 of 1	

SIZE A4
 VER R8