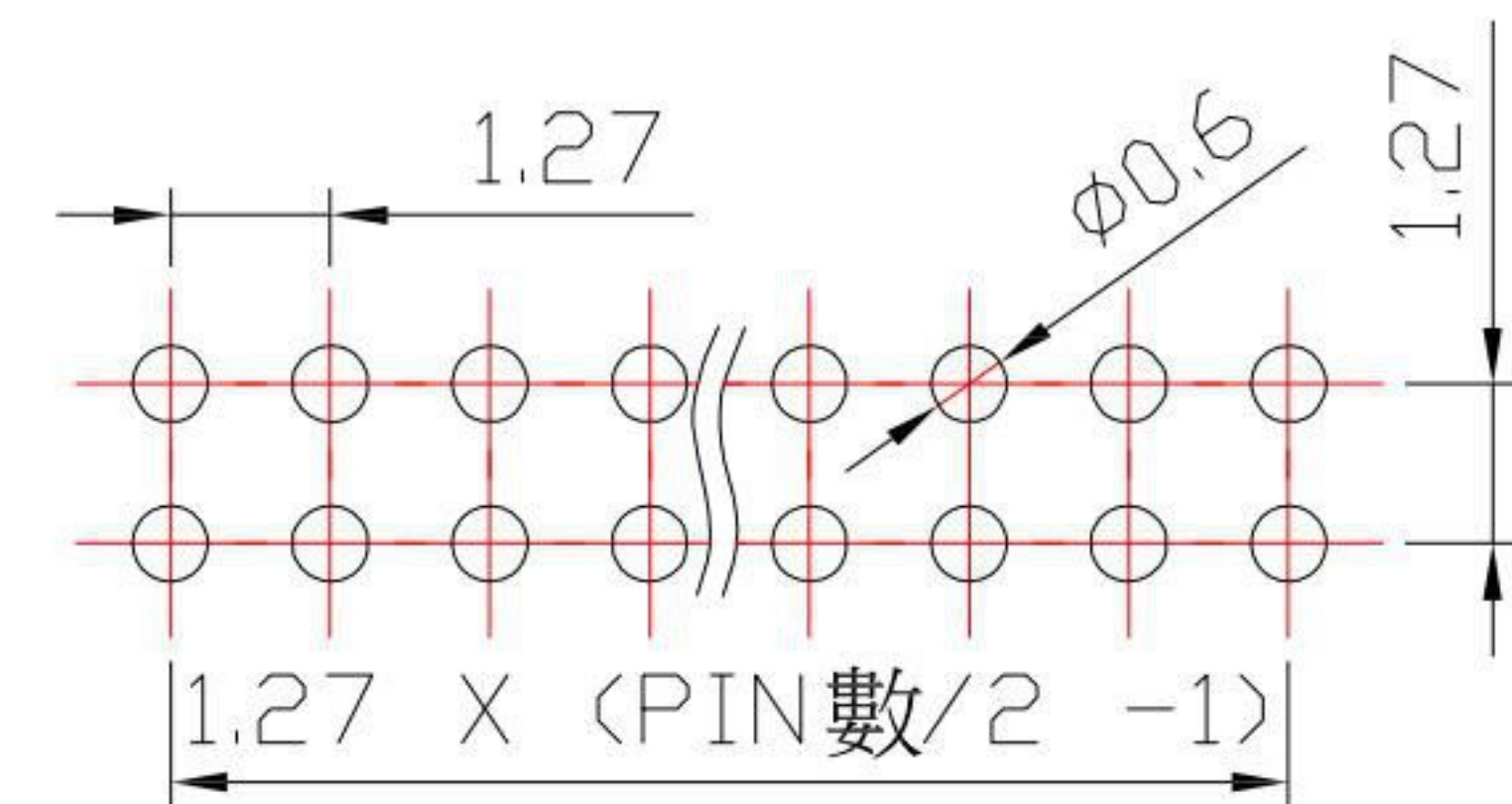
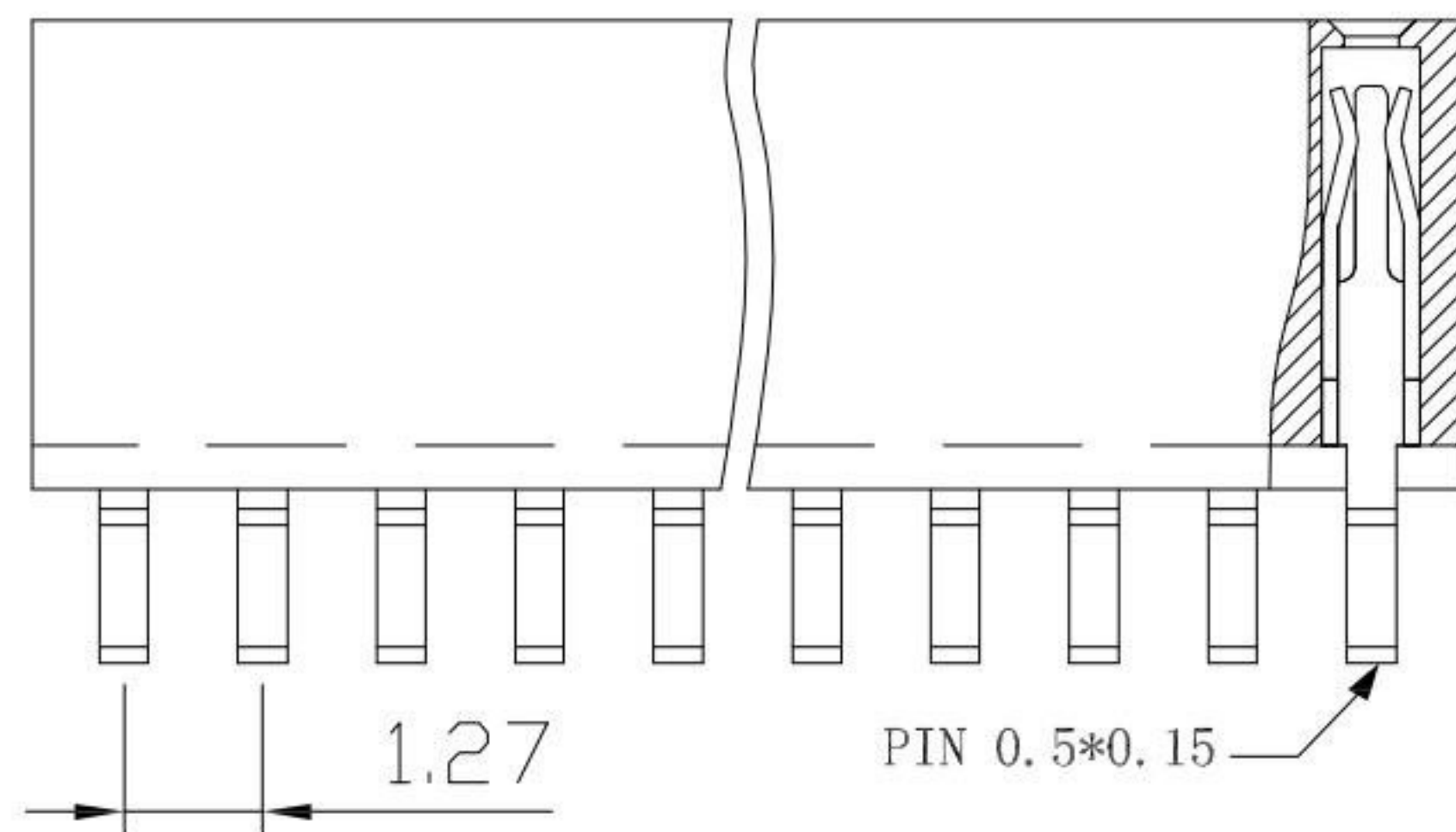
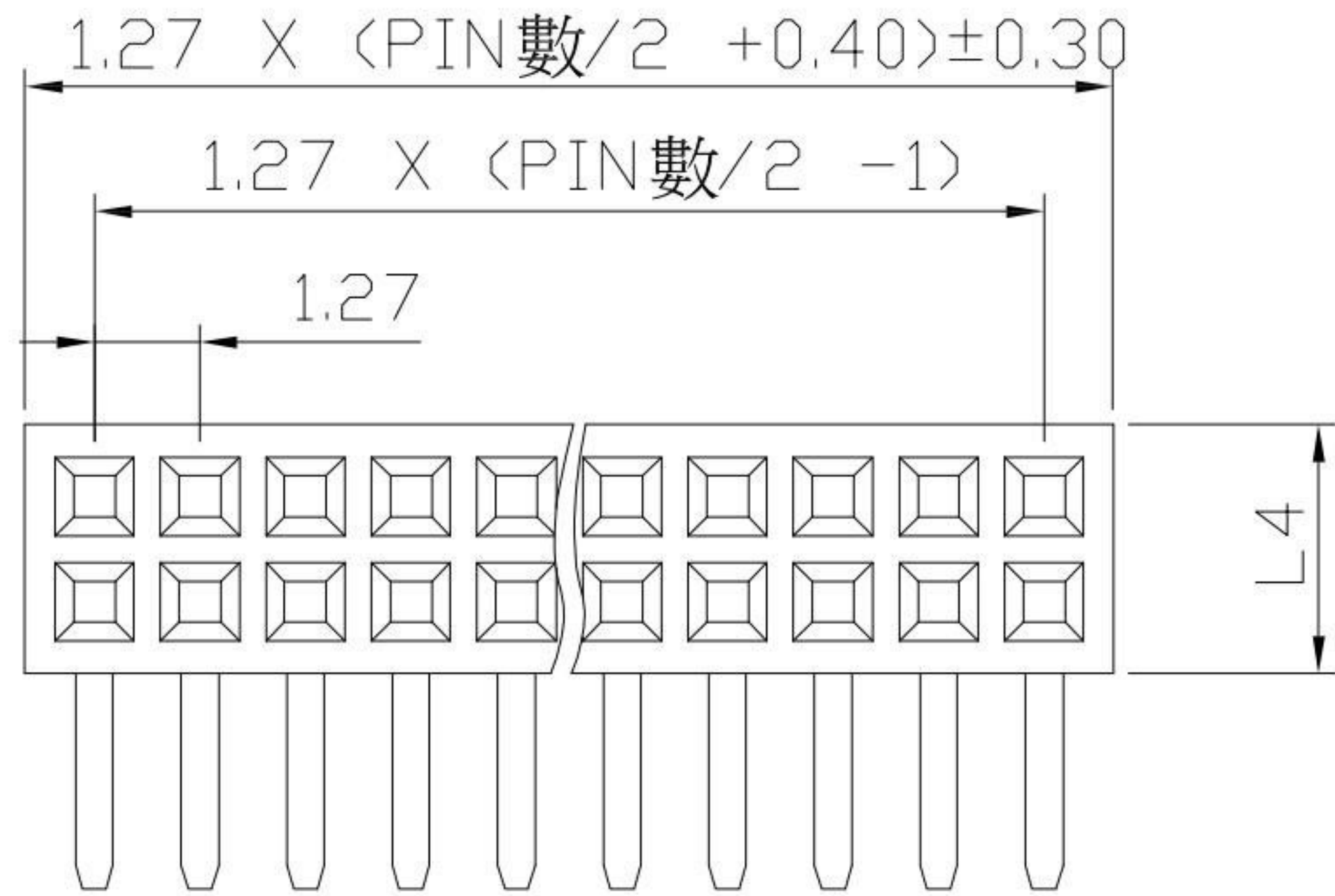




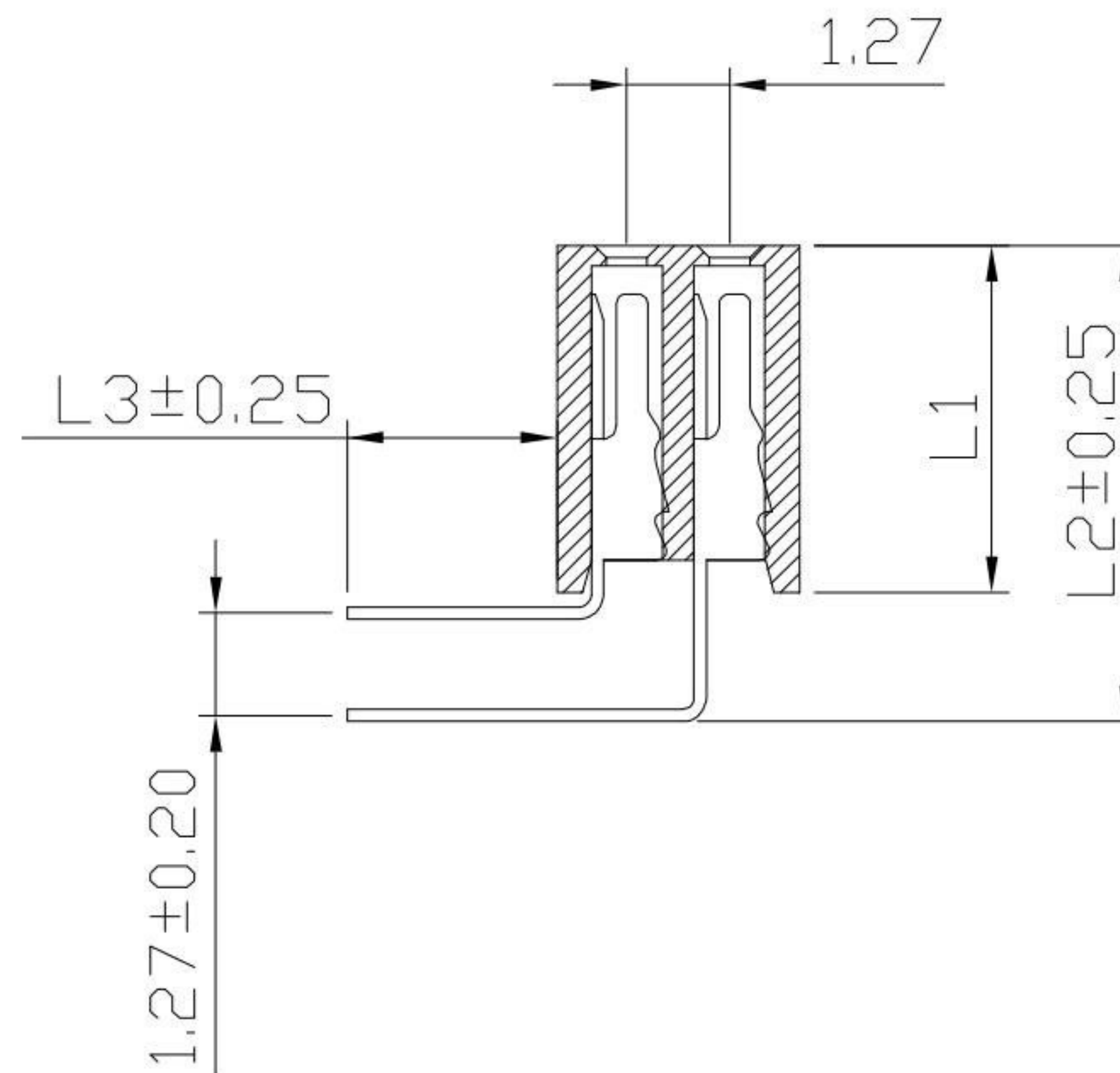
FH-C1A2-32xxx-S304

PIN數

	L1	L2	L3	L4
A	4.30	5.90	2.60	3.00



P. C. B. Layout



SPECIFICATIONS:

- 1.Current Rating : 1.0 A
- 2.Insulation Resistance : 1,000MΩ Min
- 3.Contact Resistance : 20mΩ Max
- 4.Operation Temperature : -40°C to +105°C

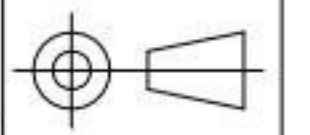
MATERIALS:

- 1.Insulator : PA6T
- 2.Contact : Brass
- 3.Contact Plating : Gold over Nickel

**KSD** 科斯达电子科技有限公司  
SWITCH CONNECTOR KSD ELECTRONIC TECHNOLOGY Co., LTD  
全球 互联零组件制造企业

TOLERANCE UNLESS OTHERWISE STATED: Up to 5 ±0.2, Above 5 ~ 15 ±0.3, Above 15 ~ 30 ±0.4, Above 30 ~ 50 ±0.5, Angle ±0.3°

3RD. ANGEL'S



UNITS

MM

DRAWN BY: Jack Lu, DATE: 11/22/21  
CHECKED BY: Jacky Chen, DATE: 11/22/21  
APPROVED BY: Tony Kao, DATE: 11/22/21

MAT'L		TITLE	Female Header
FINISH		MODLE	1.27 Female Header DIP
SCALE	1 : 1	DWG NO.	FH-C1A2-32xxx-S304
SHEET NO.	1 of 1	PART NO.	FH-C1A2-32xxx-S304

SIZE A4  
VER R