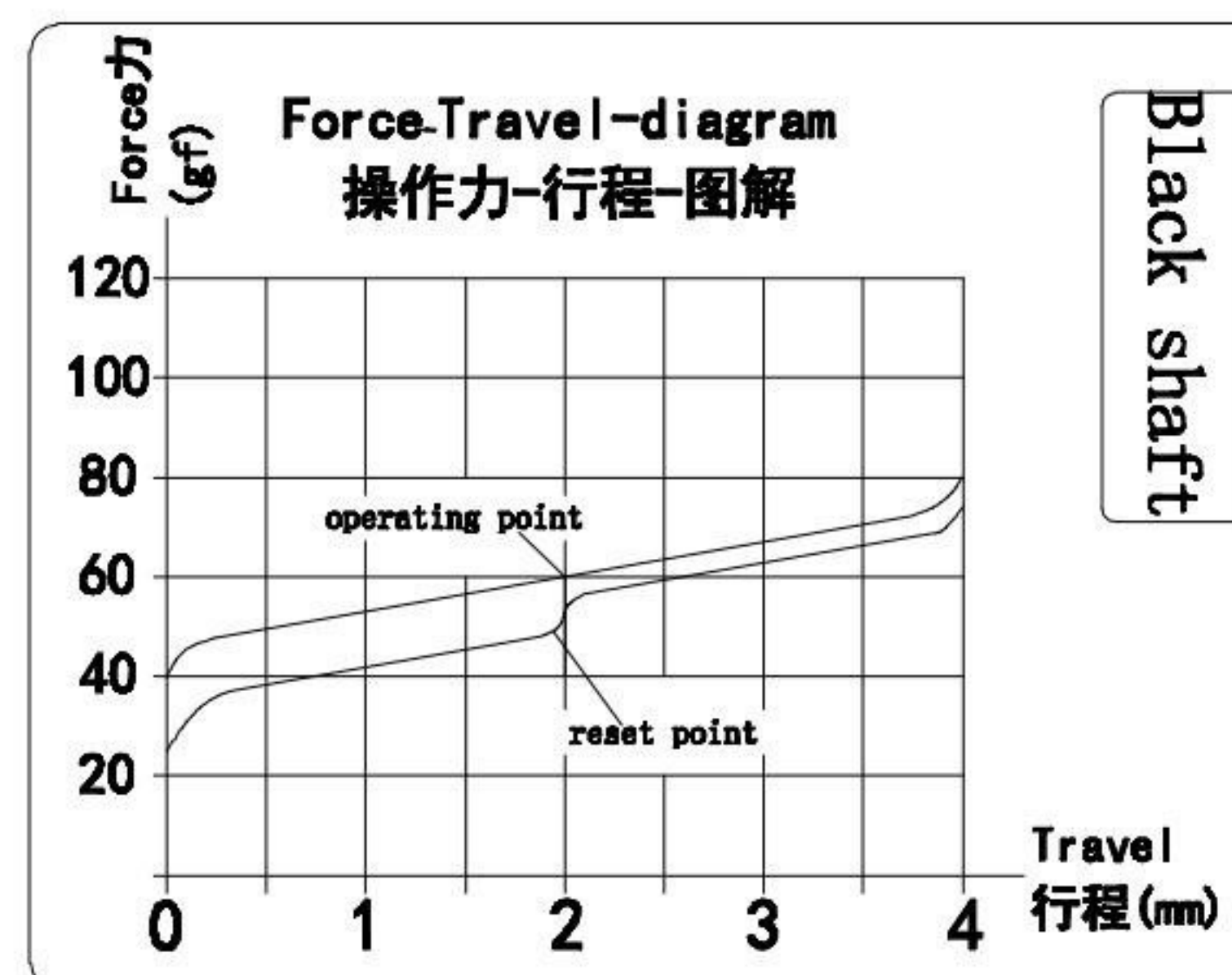
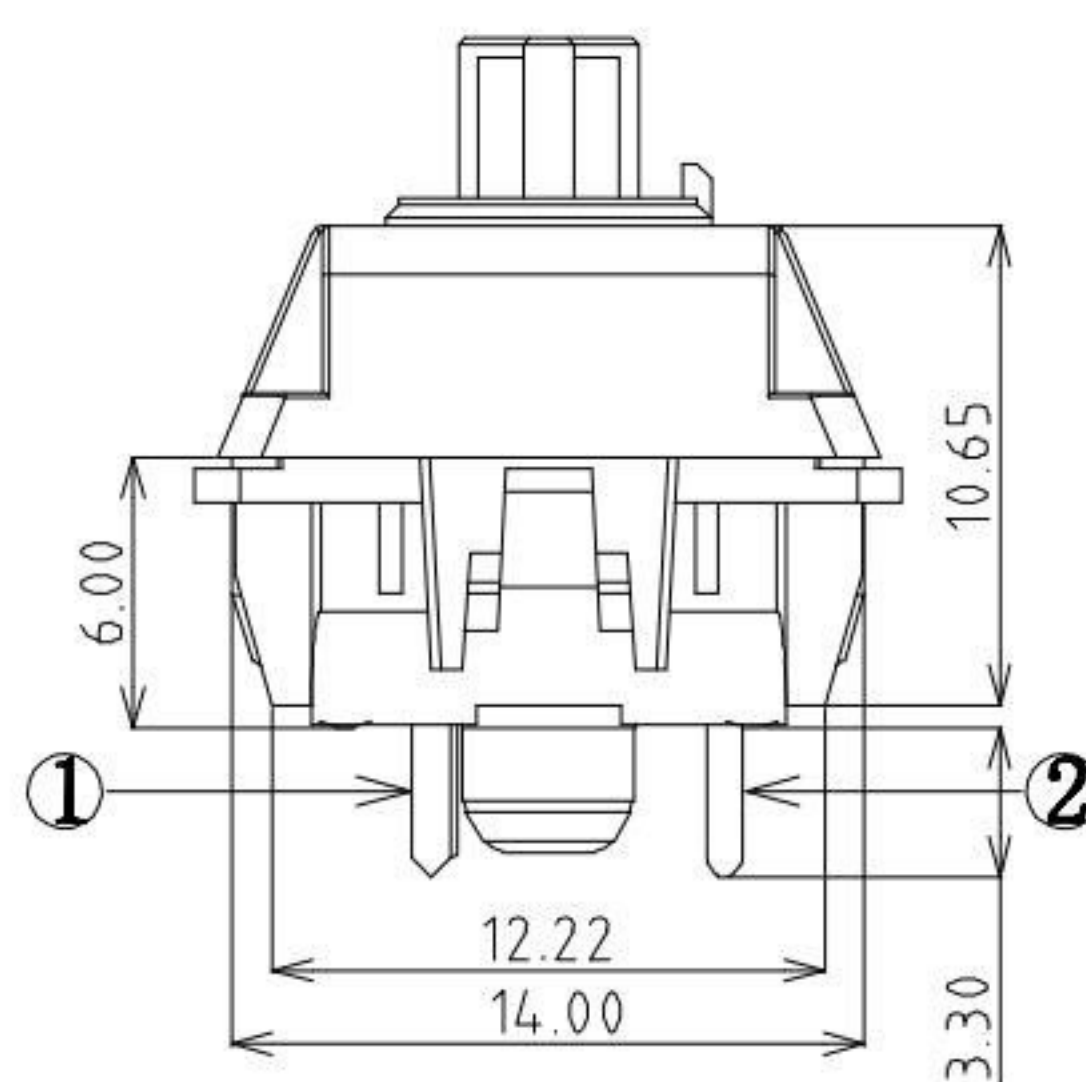
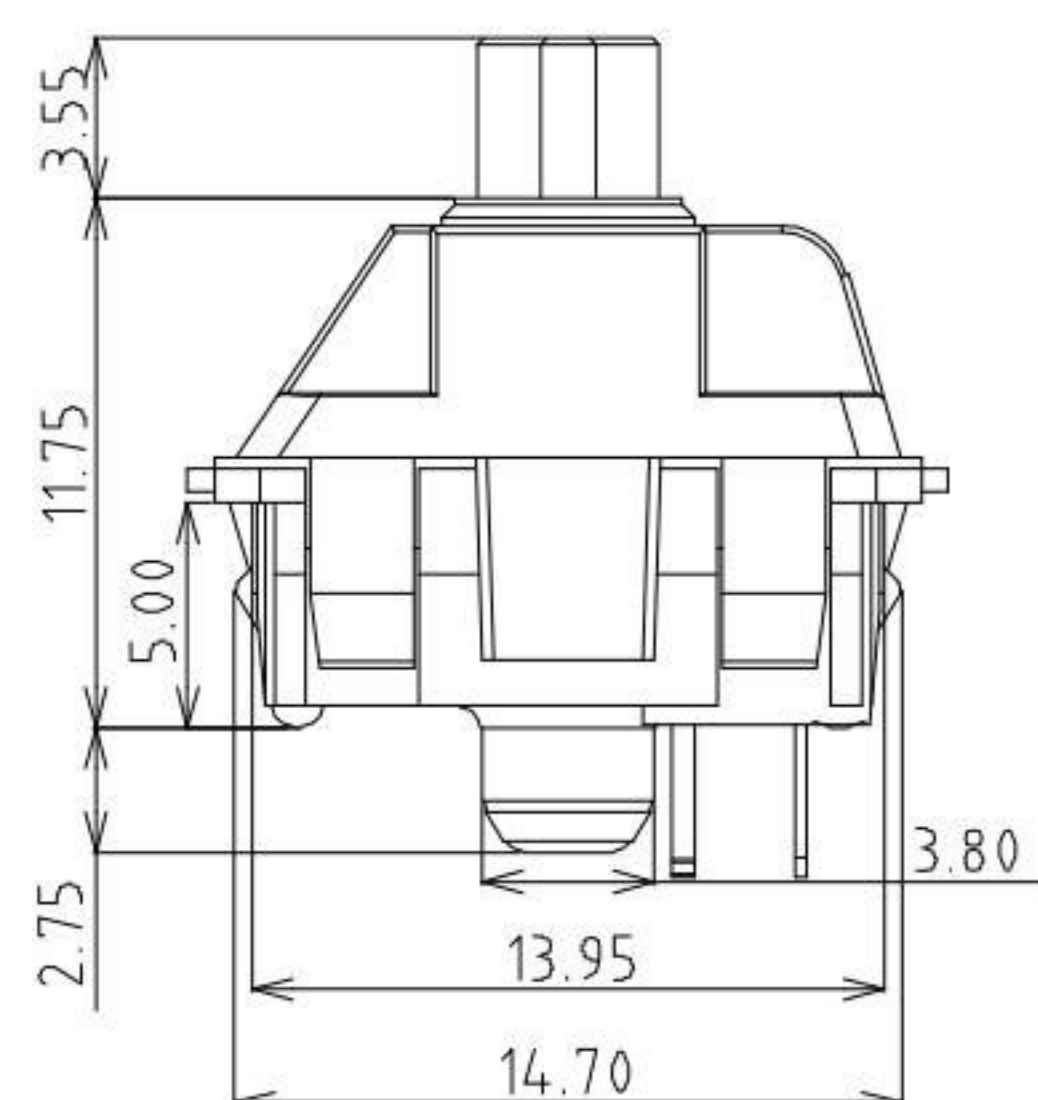
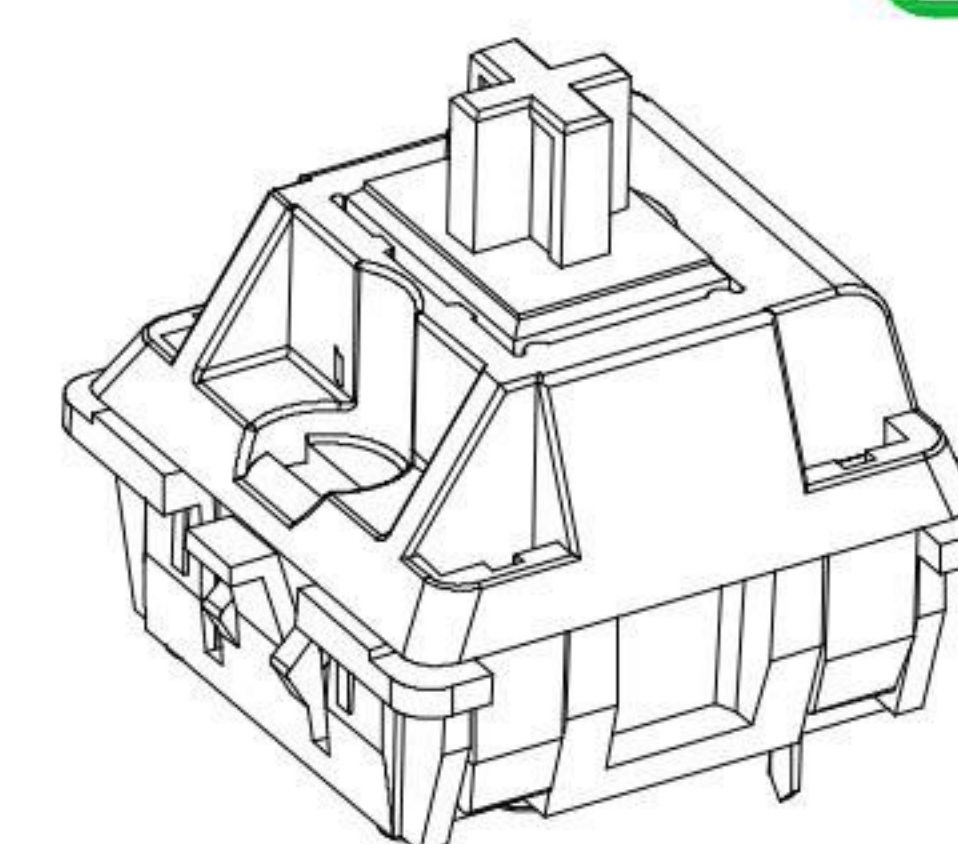
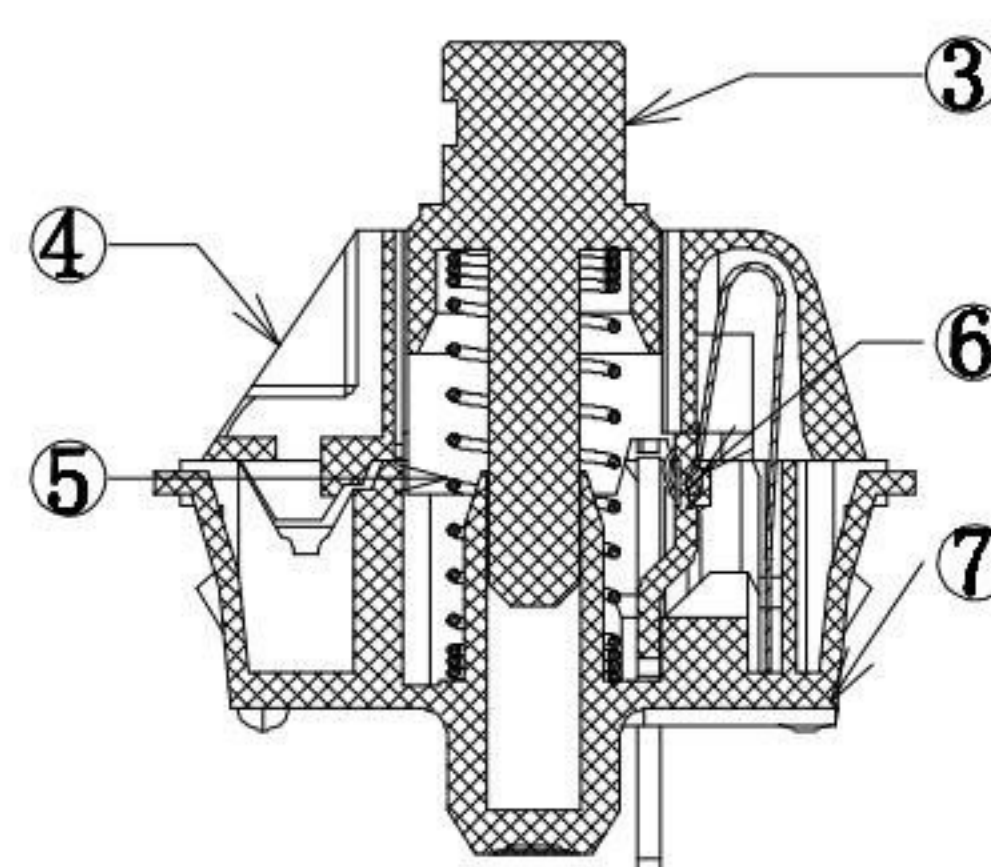
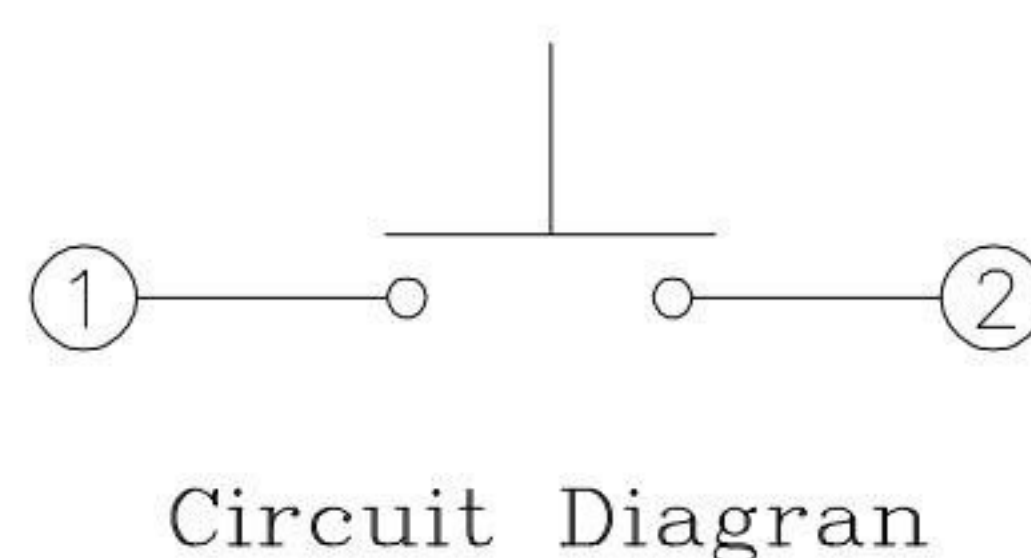
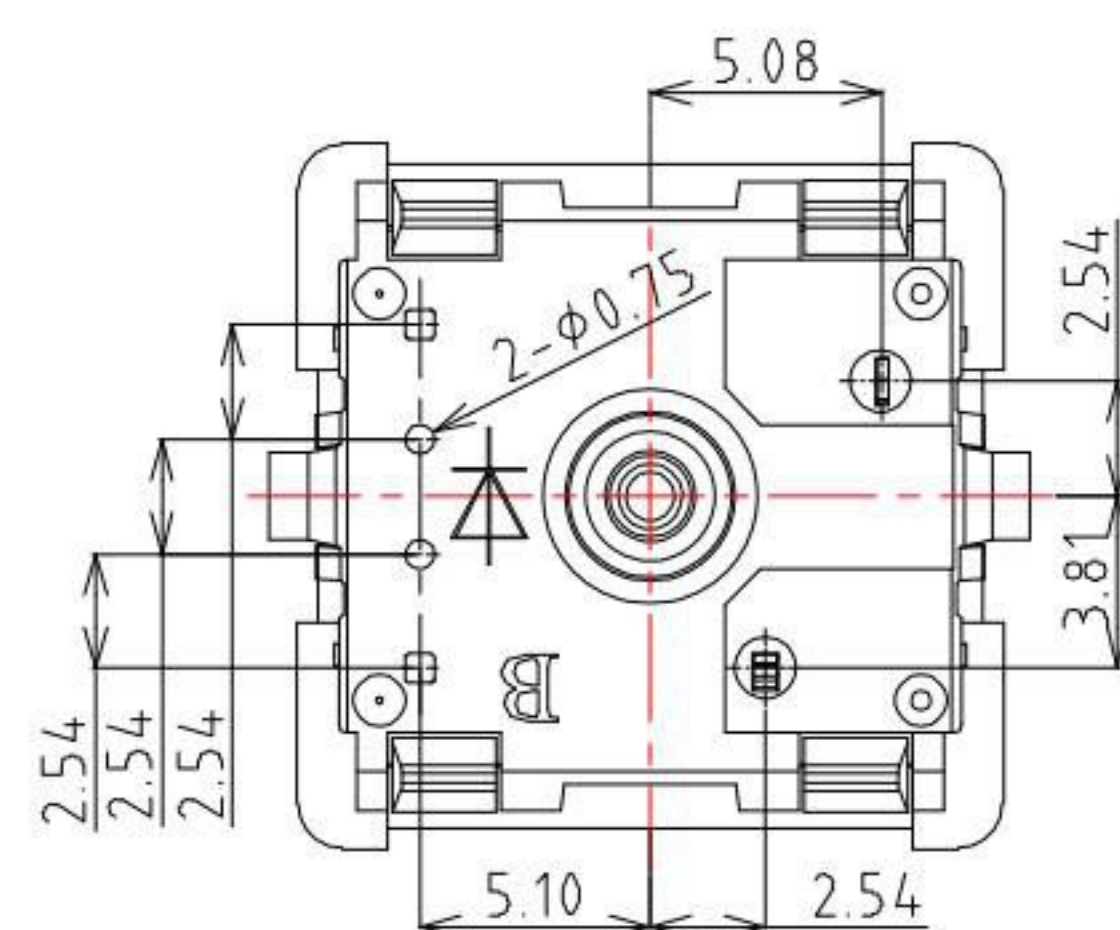


PCB Layout (Pattern Side)



Specification :

1. Rating :12 VAC/DC max. 2 VDC min.
10mA AC/DC max. 10 μ A DC min.
2. Contact Resistance : 200m Ω Max
3. Insulation Resistance :100M Ω Min (DC100V)
4. Withstand Voltage :AC500V (50-60Hz) for 1 minute
5. Bounce Time: \leq 5msec (at 16 in/sec. actuation speed)
6. Operation Force :60 \pm 15gf
7. End Force :80 \pm 15gf
8. Pretravel:2.0 \pm 0.4mm
9. Total travel:4.0 -0.3mm
10. Operating Life :50,000,000 Cycles(min)



Circuit Diagram

ITEM	PART NAME	TER'NO.	QTY.	MATERIAL	FINISHING	REMARK
⑦	Base	—	1	Nylon	Black	—
⑥	contact	—	2	Silver alloy	Brushing Gold	—
⑤	Spring	—	1	Stainless Steel	—	—
④	Cover	—	1	Nylon	Black	—
③	Keystroke	—	1	POM	Black(Black3C)	—
②	Terminal	—	1	Brass	Plating Nickel	—
①	Reed	—	1	Copper Alloy	—	—

KSD 科斯达电子科技有限公司
 SWITCH CONNECTOR KSD ELECTRONIC TECHNOLOGY Co., LTD
 全球 互联零组件制造企业

TOLERANCE UNLESS OTHERWISE STATED:
 Up to 5 \pm 0.2
 Above 5 ~ 15 \pm 0.3
 Above 15 ~ 30 \pm 0.4
 Above 30 ~ 50 \pm 0.5
 Angle \pm 0.3'

3RD. ANGEL'S

UNITS MM

DRAWN BY:	DATE	MAT'L	TITLE	SWITCH
Jack Lu	12/16/15		MODLE	Keyboard Switch / Black Shaft
CHECKED BY:	DATE	FINISH	DWG NO.	KS-01B-60-S105
Jacky Chen	12/16/15		PART NO.	KS-01B-60-S105
APPROVED BY:	DATE	SCALE	SHEET NO.	1 of 1
Tony Kao	12/16/15	1:1		

ITEM NO.	DESCRIPTION	DRAWN	DATE