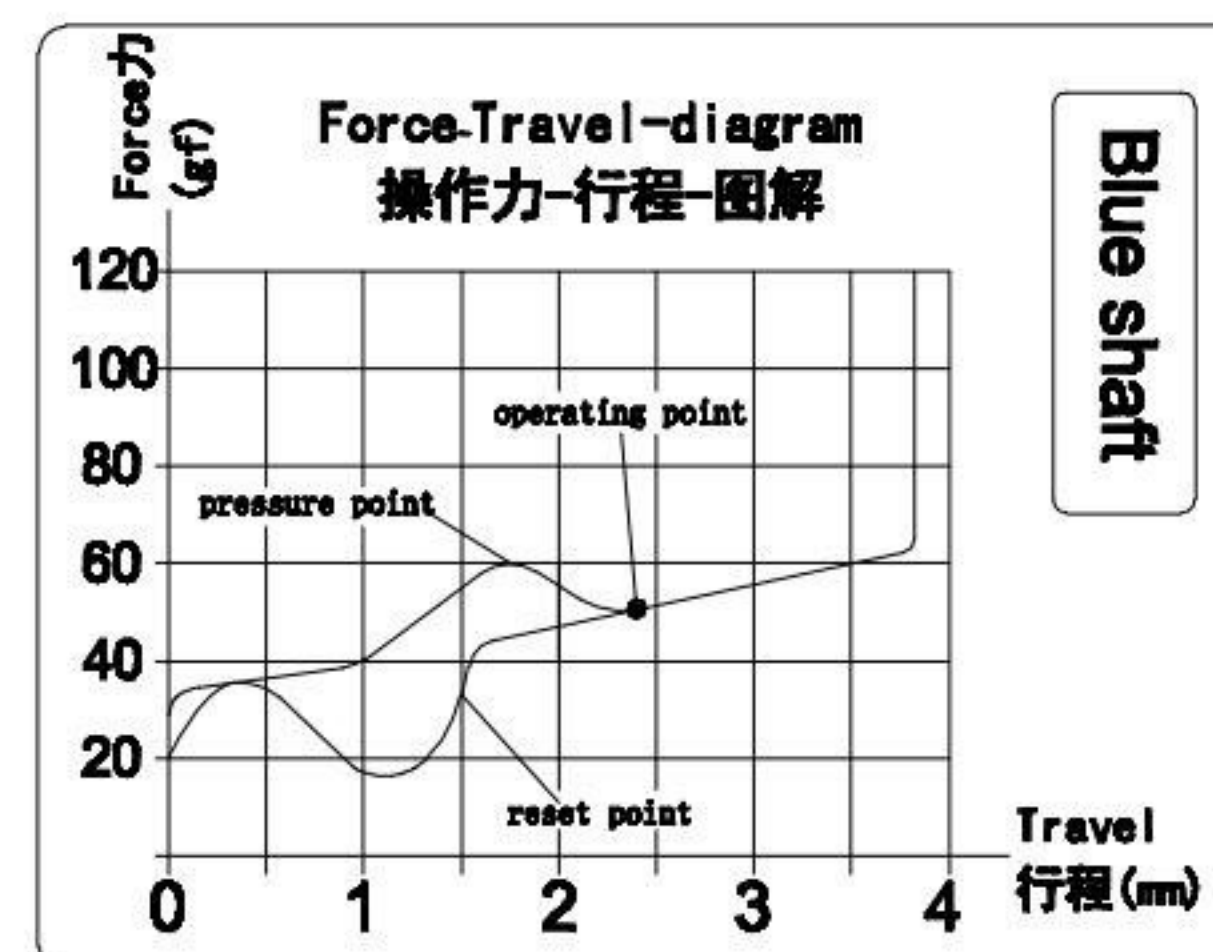
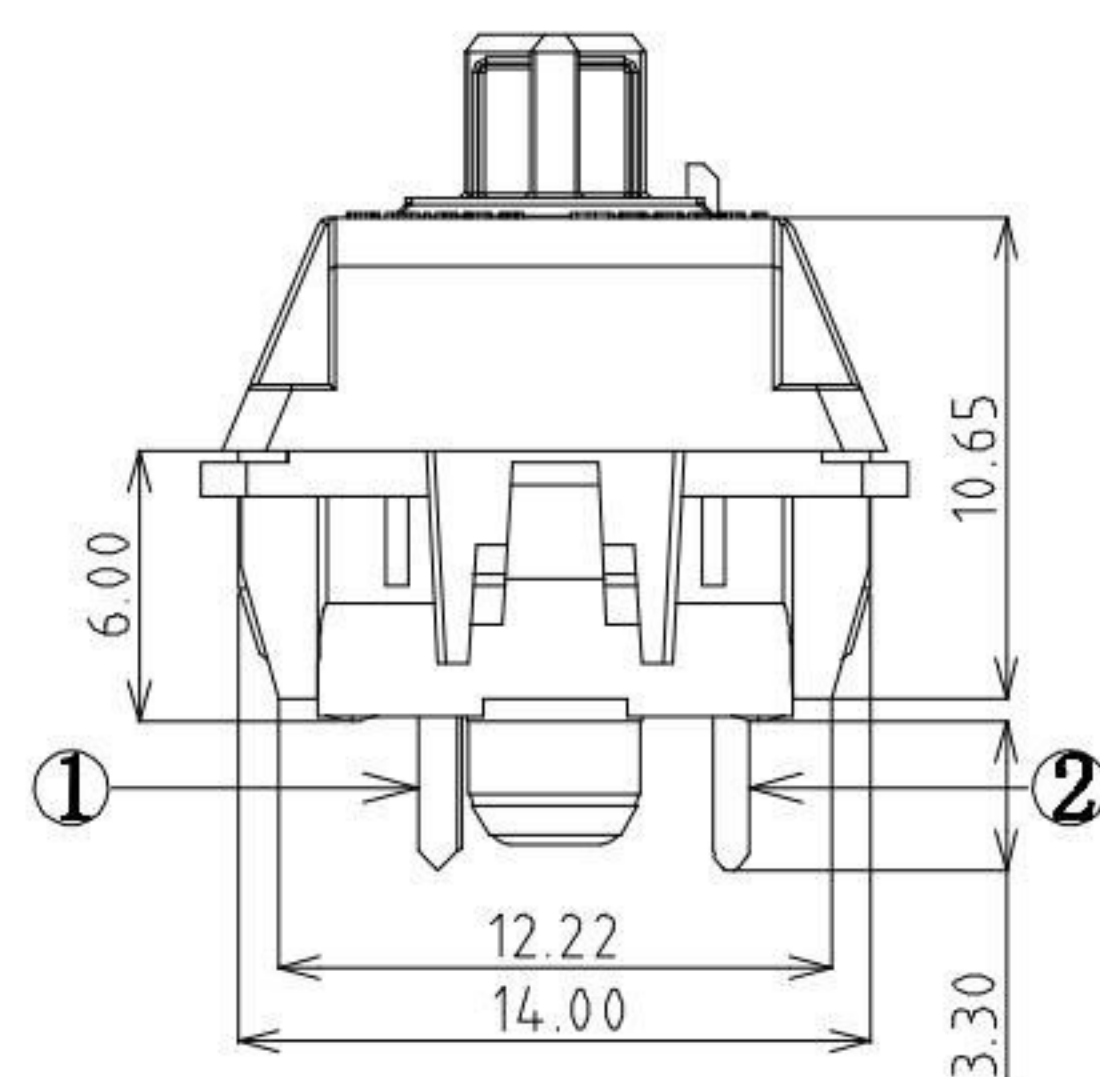
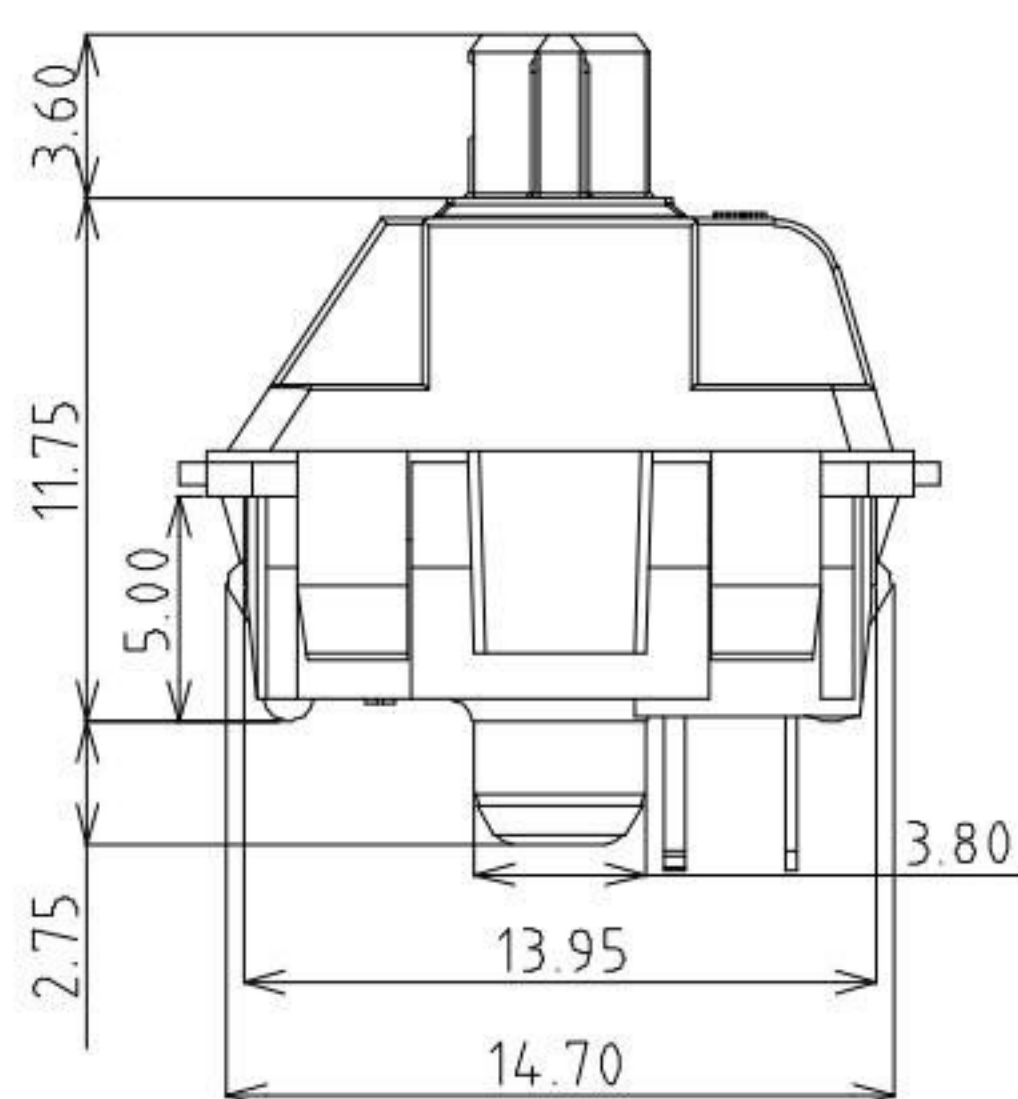
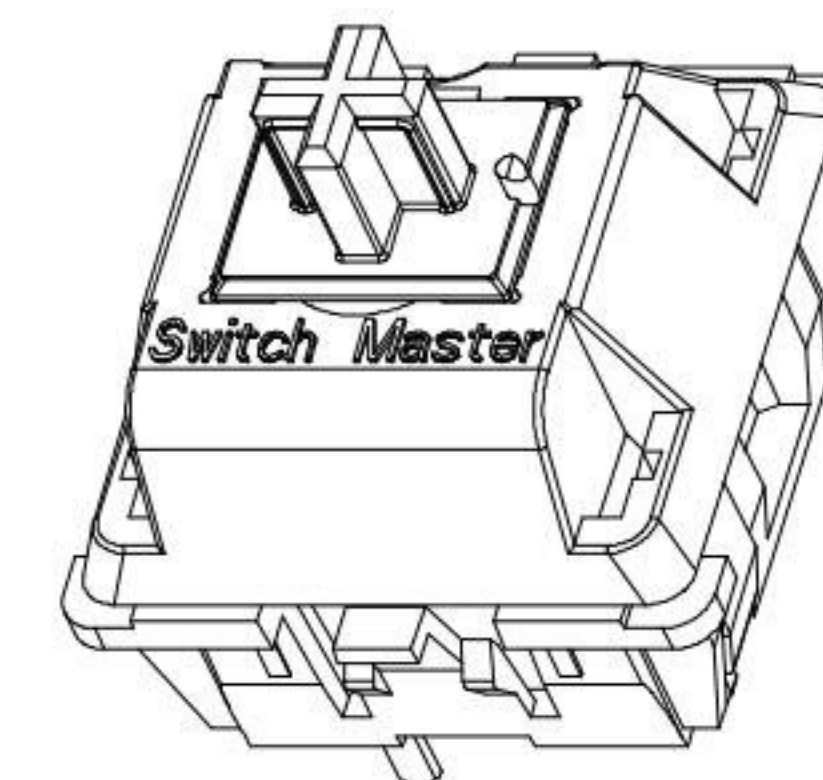
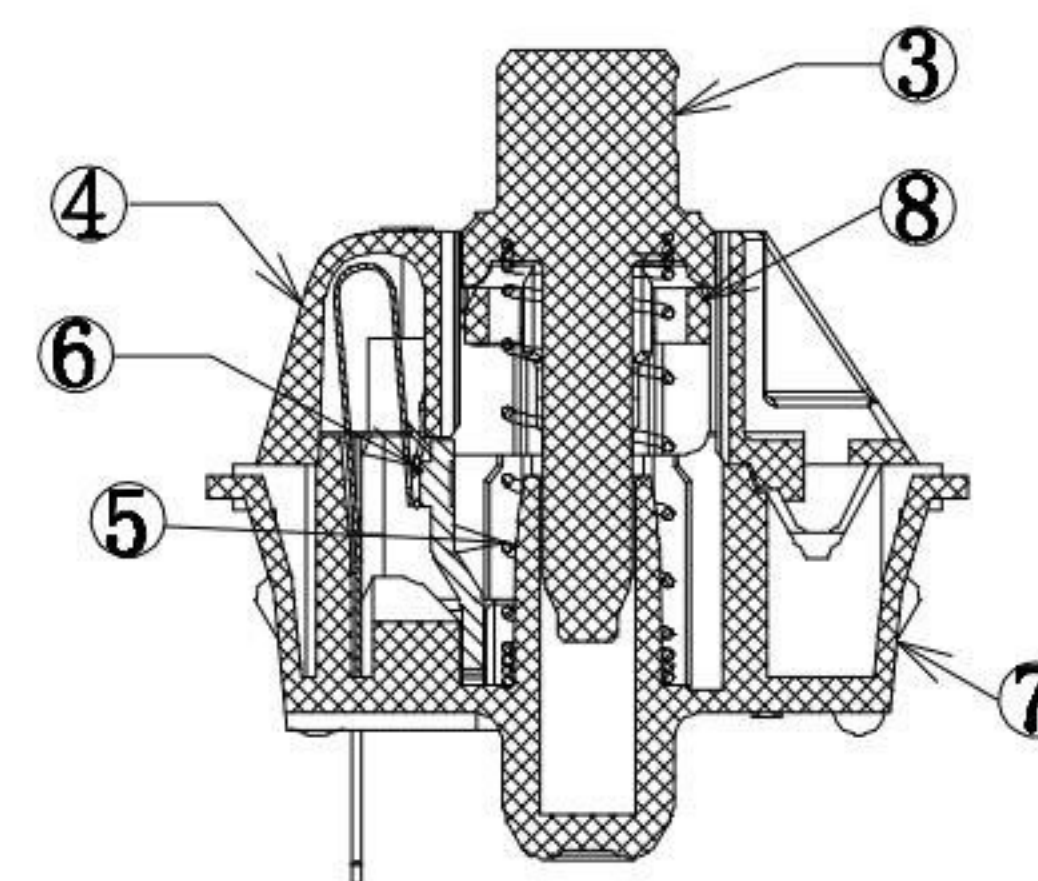
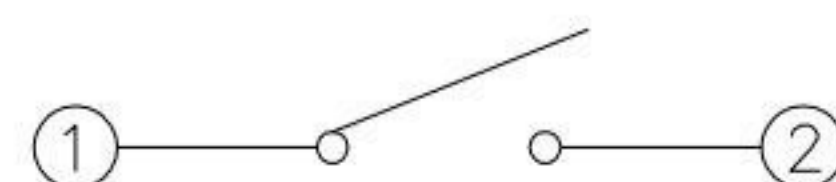
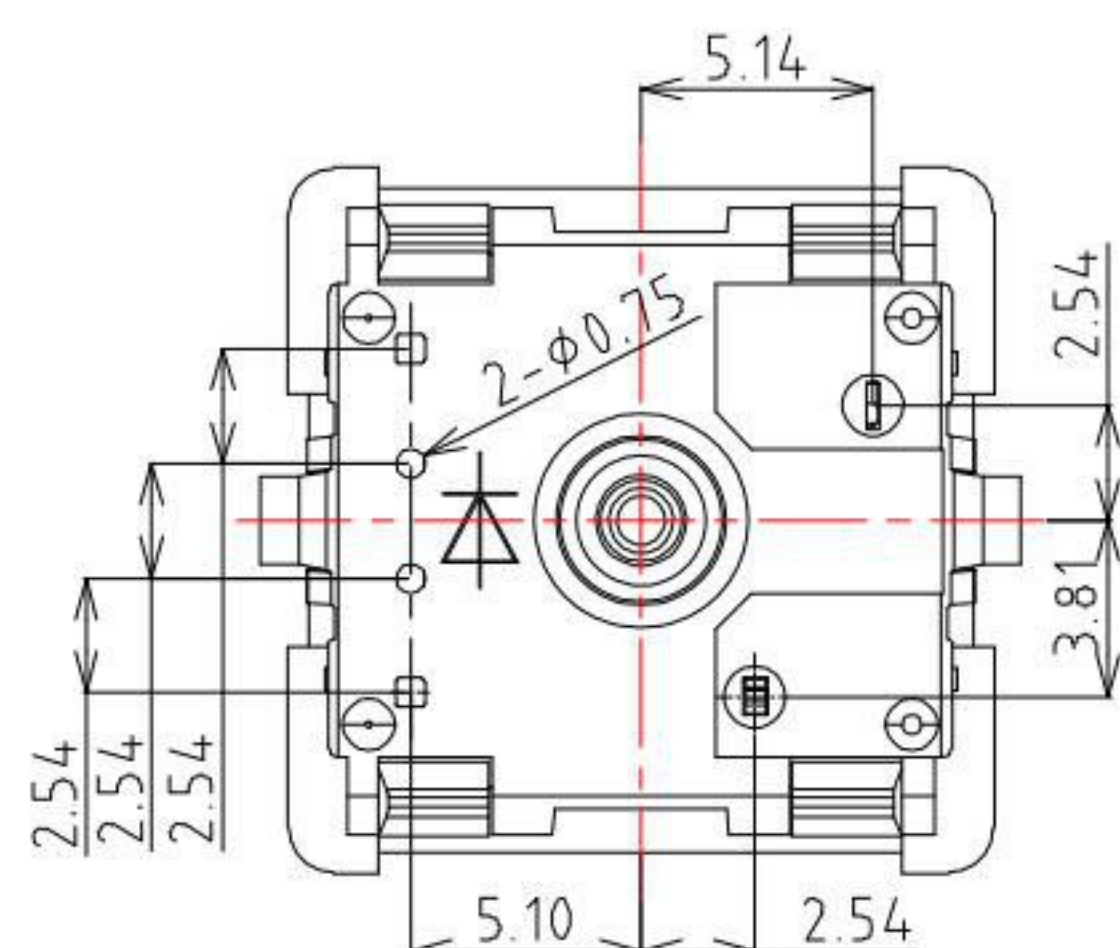


PCB Layout (Pattern Side)



Specification :

1. Rating :12 VAC/DC max. 2 VDC min.
10mA AC/DC max. 10 μ A DC min.
2. Contact Resistance : 200m Ω Max
3. Insulation Resistance :100M Ω Min (DC100V)
4. Withstand Voltage :AC500V(50-60Hz) for 1 minute
5. Bounce Time: \leq 5msec (at 16 in/sec. actuation speed)
6. Operation Force :50 \pm 15gf
7. Pressure Point Force :60 \pm 15gf
8. Pretravel:2.0mm \pm 0.4mm
9. Total travel:4.0+0/-0.3mm
10. Operating Life :50,000,000 Cycles(min)
11. Protection class: IP40



Circuit Diagram

ITEM	PART NAME	TER'NO.	QTY.	MATERIAL	FINISHING	REMARK
⑧	Follower	—	1	POM	White	—
⑦	Base	—	1	Nylon	Black	—
⑥	contact	—	2	Silver alloy	Brushing Gold	—
⑤	Spring	—	1	Stainless Steel	—	—
④	Cover	—	1	Nylon	Black	—
③	Keystroke	—	1	POM	Blue	—
②	Terminal	—	1	Brass	Plating Nickel	—
①	Reed	—	1	Copper Alloy	—	—

ITEM NO.	DESCRIPTION	DRAWN	DATE
1	更新MODLE	Jack	121615

KSD 科斯达电子科技有限公司
 SWITCH CONNECTOR KSD ELECTRONIC TECHNOLOGY Co., LTD
 全球 互联网 零组件 制造企业

TOLERANCE UNLESS OTHERWISE STATED:

Up to 5	\pm 0.2
Above 5 ~ 15	\pm 0.3
Above 15 ~ 30	\pm 0.4
Above 30 ~ 50	\pm 0.5
Angle	\pm 0.3'

3RD. ANGEL'S

UNITS MM

DRAWN BY:	DATE	MAT'L	TITLE	SWITCH
Jack Lu	12/16/15		MODLE	Keyboard Switch / Blue Shaft
CHECKED BY:	DATE	FINISH	SCALE	1:1
Jacky Chen	12/16/15		DWG NO.	KS-01C-50-S105
APPROVED BY:	DATE	SHEET NO.	PART NO.	KS-01C-50-S105
Tony Kao	12/16/15	1 of 1		

SIZE A4
VER R1