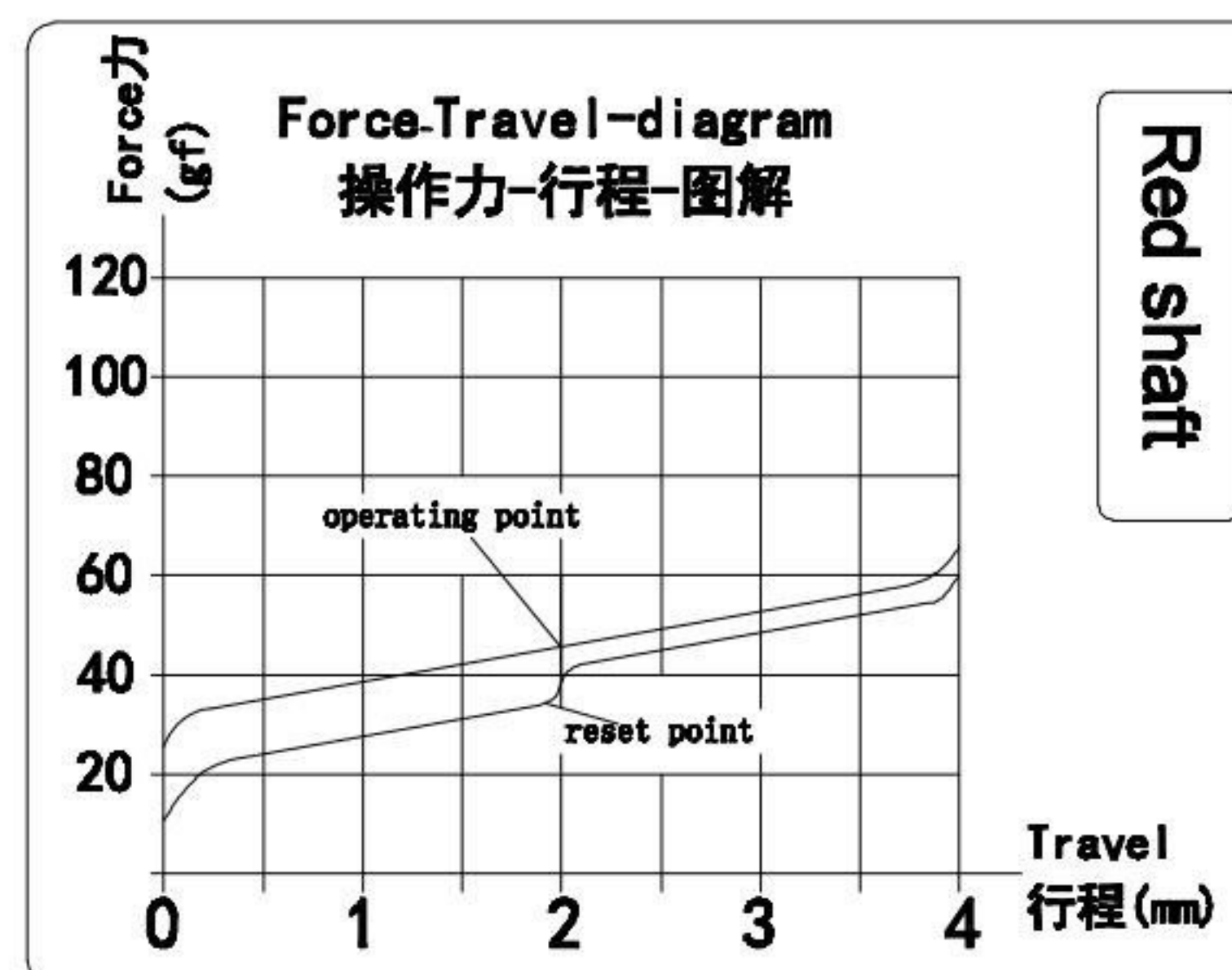
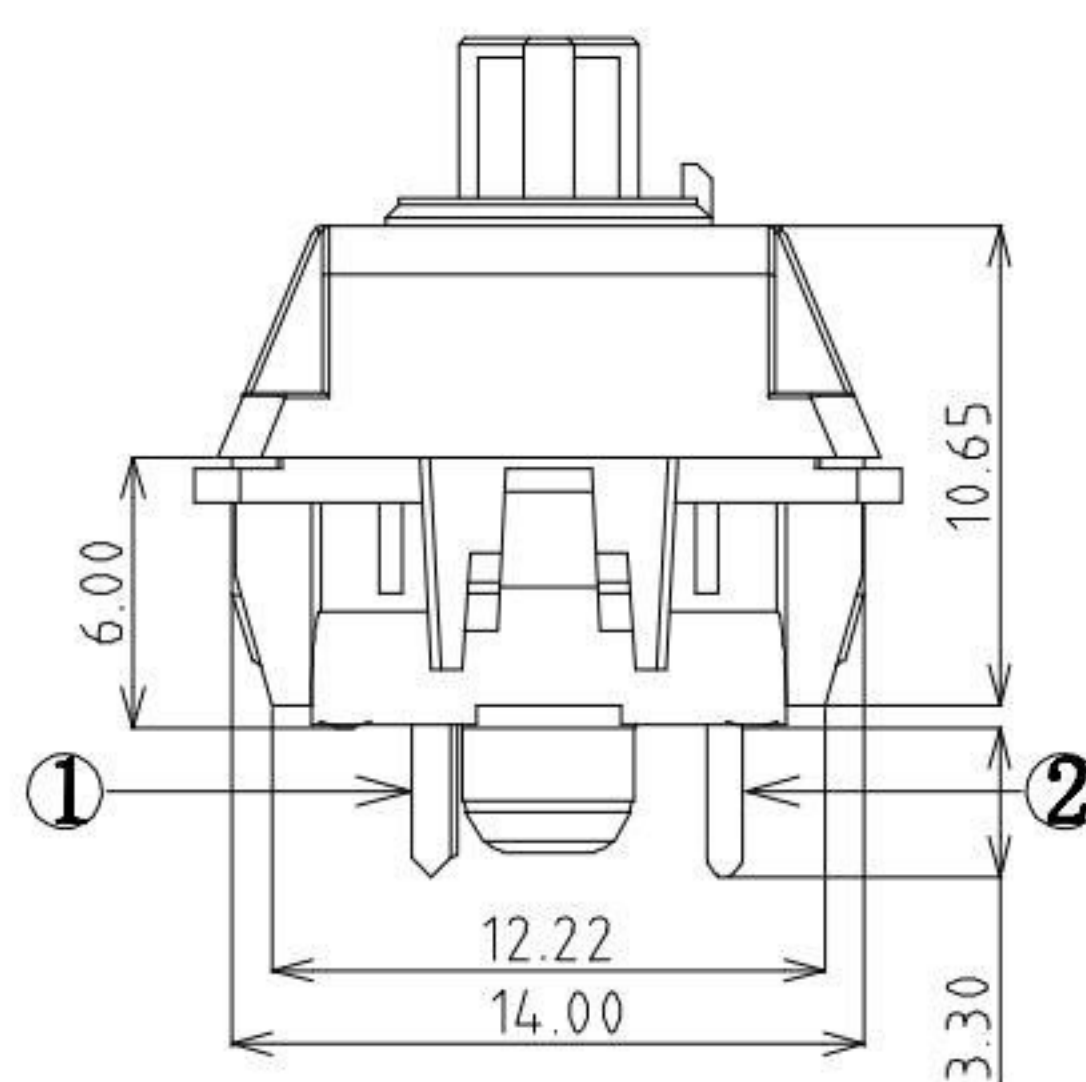
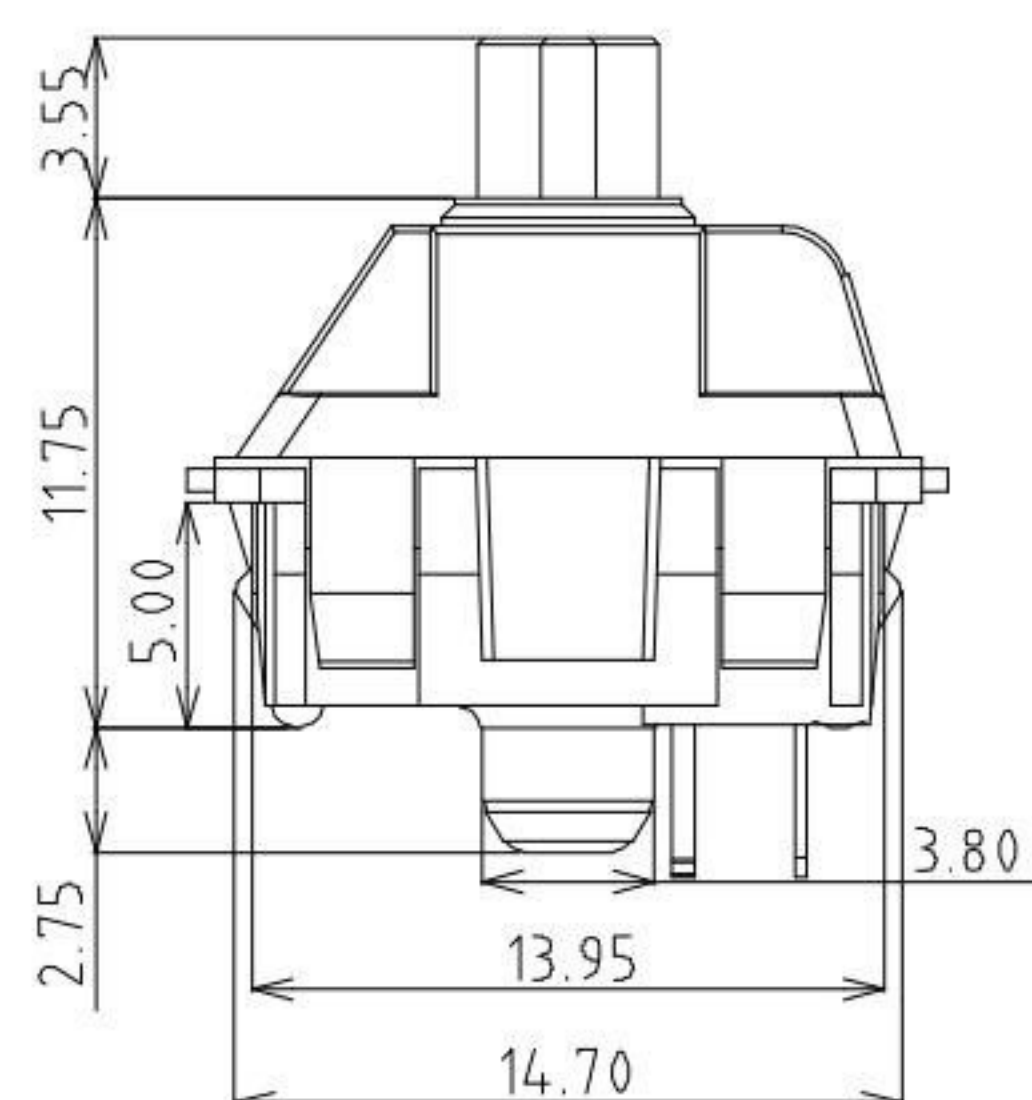
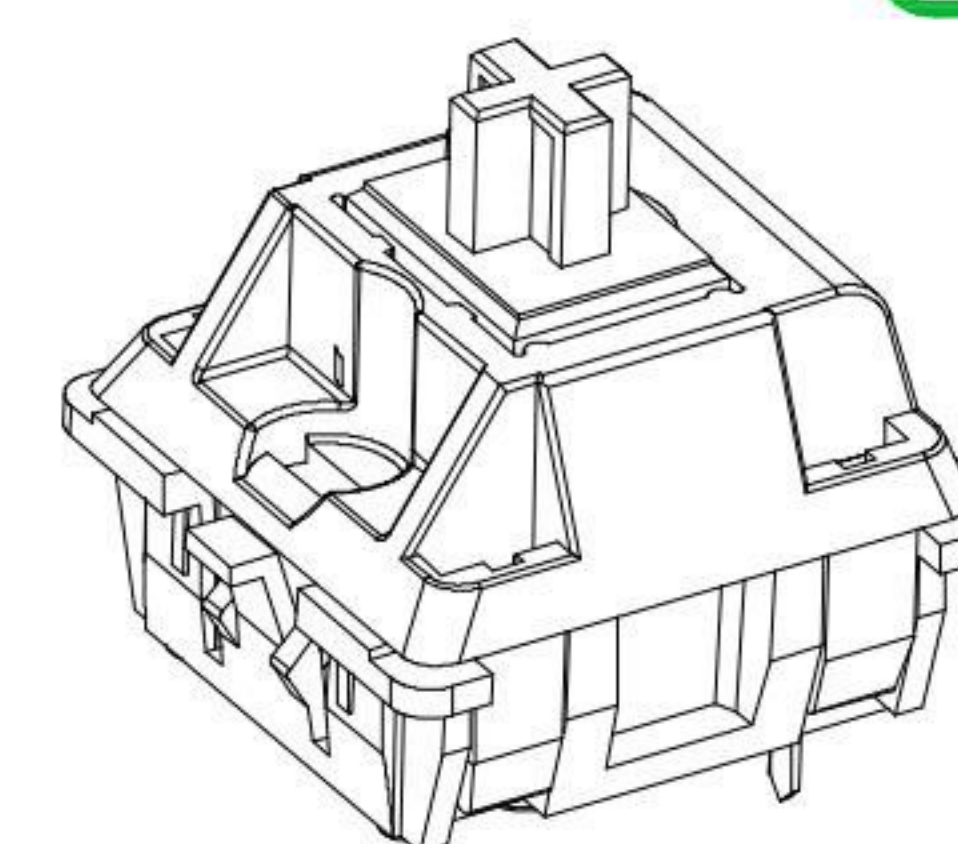
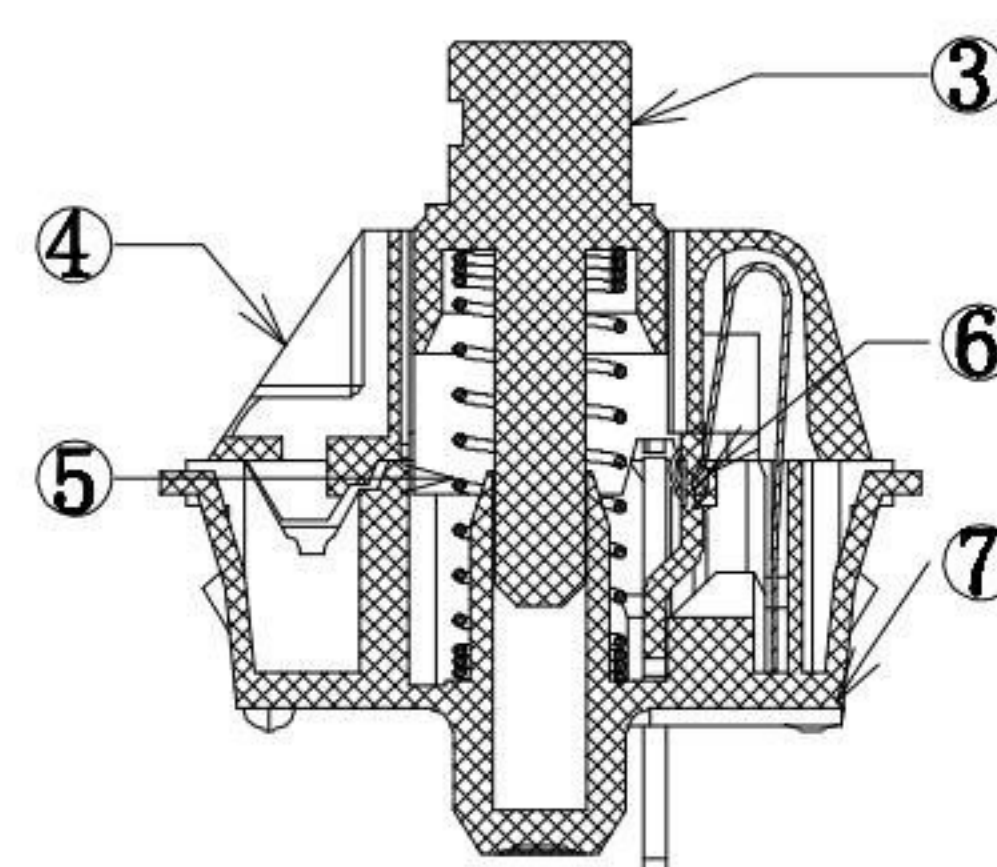
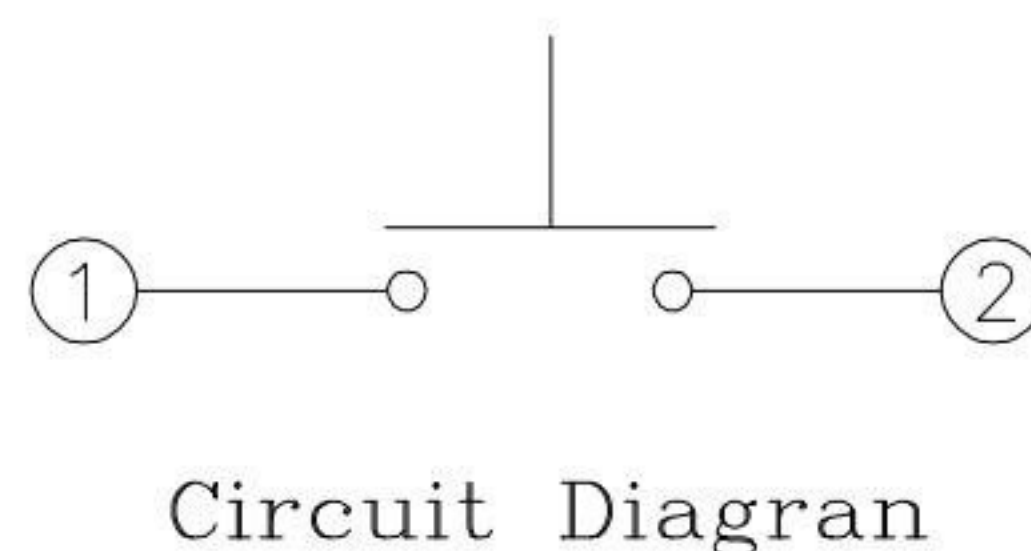
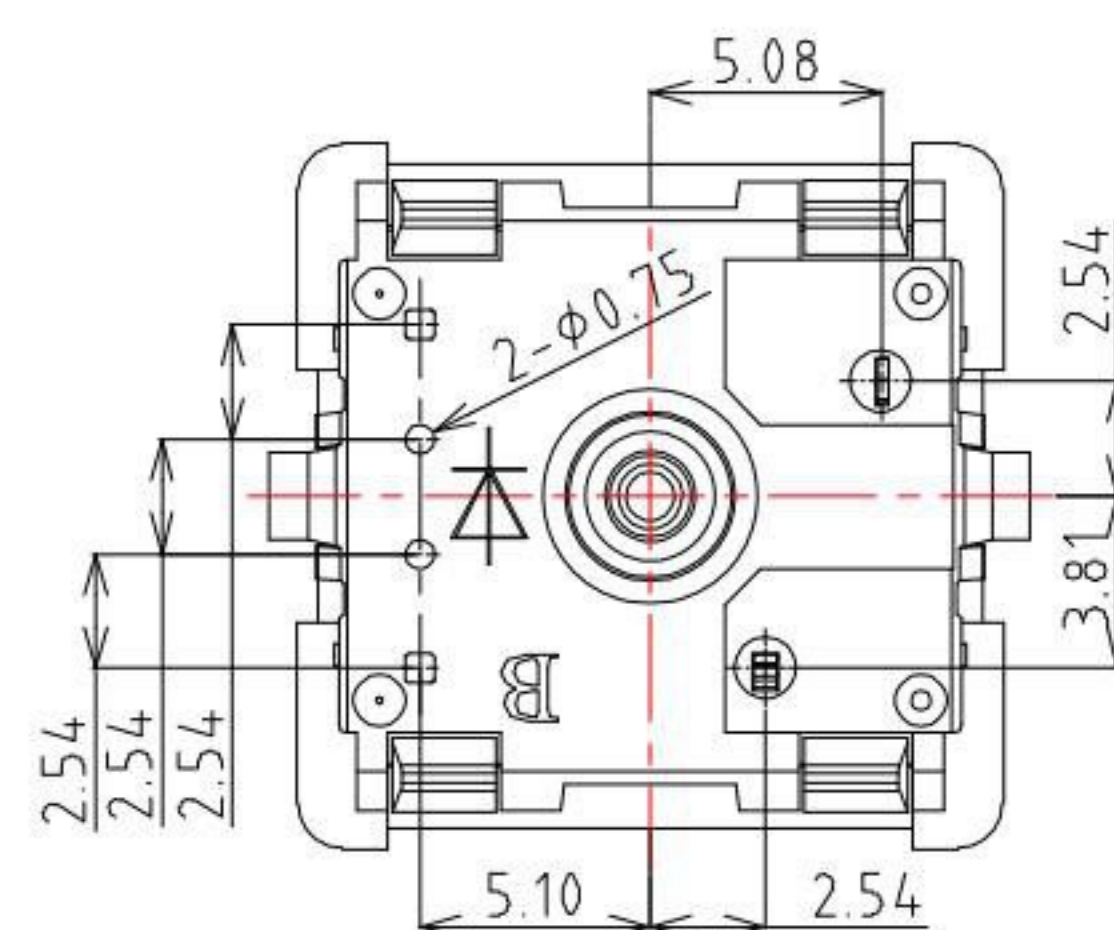


PCB Layout (Pattern Side)



Specification :

1. Rating :12 VAC/DC max. 2 VDC min.
10mA AC/DC max. 10 μ A DC min.
2. Contact Resistance : 200m Ω Max
3. Insulation Resistance :100M Ω Min (DC100V)
4. Withstand Voltage :AC500V(50-60Hz) for 1 minute
5. Bounce Time: \leq 5msec (at 16 in/sec. actuation speed)
6. Operation Force :45 \pm 15gf
7. End Force :60 \pm 15gf
8. Pretravel:2.0 \pm 0.4mm
9. Total travel:4.0 -0.3mm
10. Operating Life :50,000,000 Cycles(min)



Circuit Diagram

| ITEM | PART NAME | TER'NO. | QTY. | MATERIAL | FINISHING | REMARK |
|------|-----------|---------|------|-----------------|----------------|--------|
| ⑦ | Base | — | 1 | Nylon | Black | — |
| ⑥ | contact | — | 2 | Silver alloy | Brushing Gold | — |
| ⑤ | Spring | — | 1 | Stainless Steel | — | — |
| ④ | Cover | — | 1 | Nylon | Black | — |
| ③ | Keystroke | — | 1 | POM | Red(186C) | — |
| ② | Terminal | — | 1 | Brass | Plating Nickel | — |
| ① | Reed | — | 1 | Copper Alloy | — | — |

KSD 科斯达电子科技有限公司
 SWITCH CONNECTOR KSD ELECTRONIC TECHNOLOGY Co., LTD
 全球 互联零组件制造企业

TOLERANCE UNLESS OTHERWISE STATED:
 Up to 5 \pm 0.2
 Above 5 ~ 15 \pm 0.3
 Above 15 ~ 30 \pm 0.4
 Above 30 ~ 50 \pm 0.5
 Angle \pm 0.3'

3RD. ANGEL'S

UNITS MM

| | | | | |
|--------------|----------|-----------|----------|-----------------------------|
| DRAWN BY: | DATE | MAT'L | TITLE | SWITCH |
| Jack Lu | 12/16/15 | | MODLE | Keyboard Switch / Red Shaft |
| CHECKED BY: | DATE | FINISH | SCALE | 1:1 |
| Jacky Chen | 12/16/15 | | DWG NO. | KS-01R-45-S105 |
| APPROVED BY: | DATE | SHEET NO. | PART NO. | KS-01R-45-S105 |
| Tony Kao | 12/16/15 | 1 of 1 | | |

| ITEM NO. | DESCRIPTION | DRAWN | DATE |
|----------|-------------|-------|------|
| | | | |