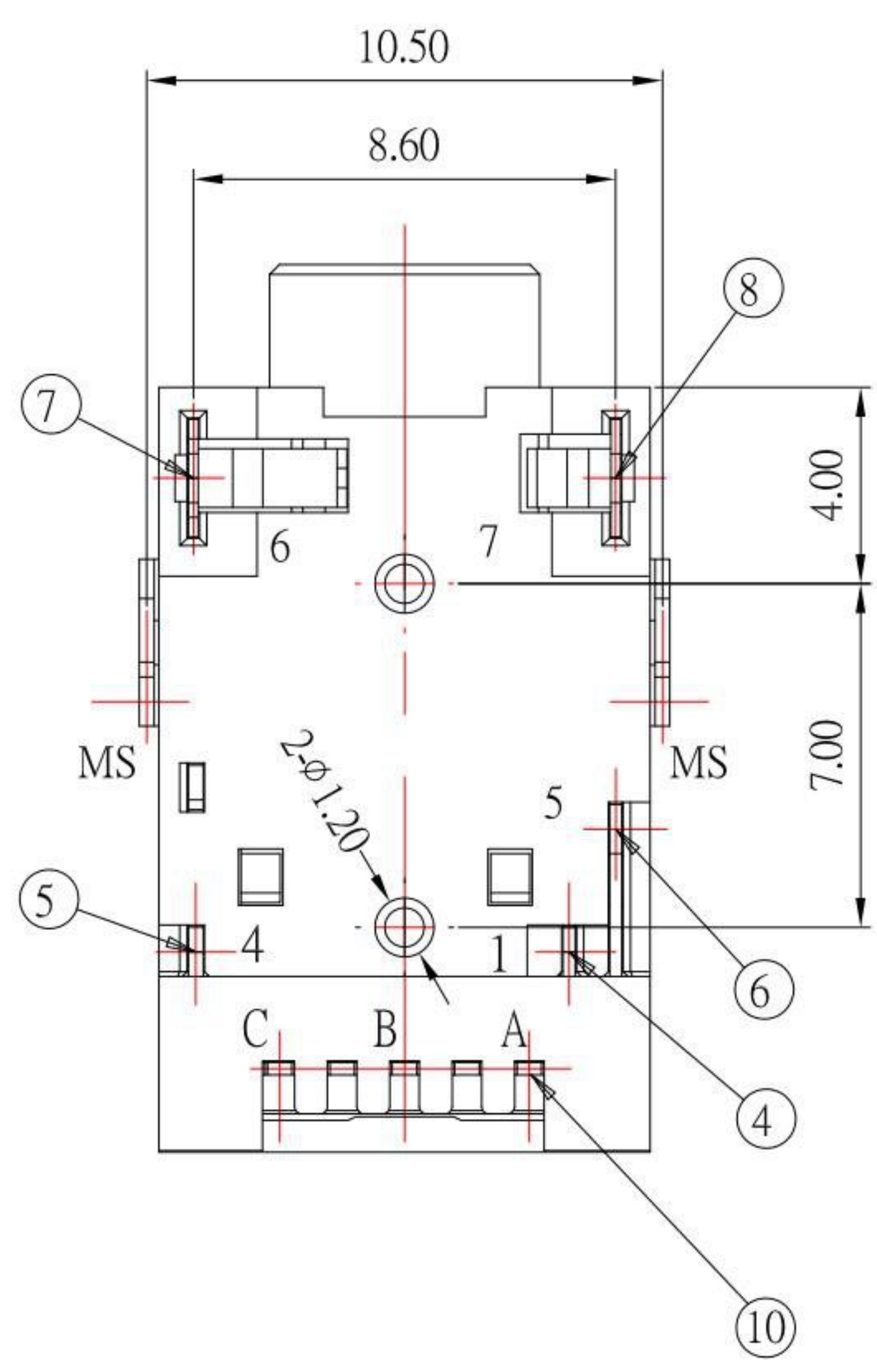
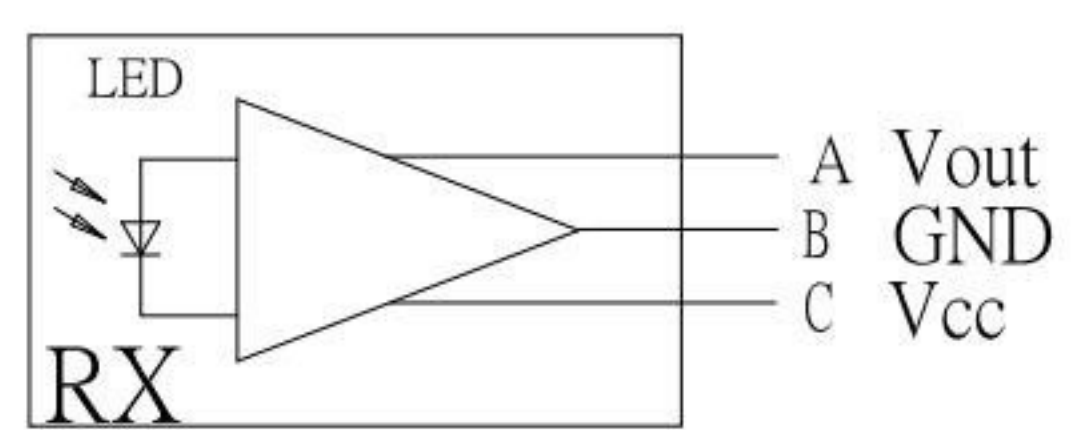
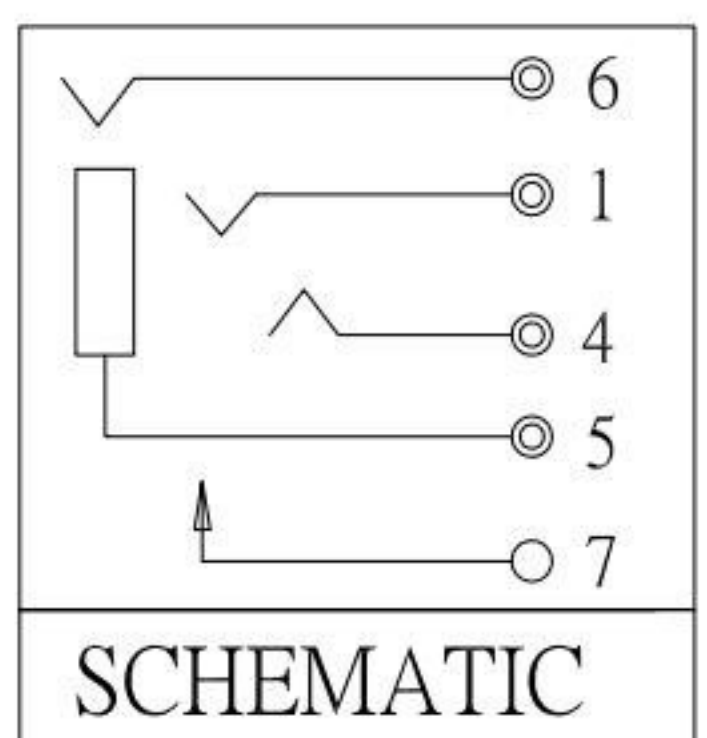


OJ-0015S-RXx-S214

1	16 Mbps
2	25 Mbps



ITEM	DESCRIPTION	MATERIAL	FINISH	QTY'	NOTE
⑩	DRIVE IC RX			1	
⑨	SUPPORT	BRASS	Ni-Sn	1	TYCO LOGO
⑧	P CONTACT	PBS	Au	1	
⑦	D/A CONTACT	PBS	Au	1	
⑥	GND CONTACT	PBS	Au	1	
⑤	T CONTACT	PBS	Au	1	
④	R CONTACT	PBS	Au	1	
③	MINOR HOUSING	PA9T		1	PINK
②	COVER	PA9T		1	BLACK
①	HOUSING	PA9T		1	

**KSD** 科斯达电子科技有限公司  
 SWITCH CONNECTOR 全球 互聯零組件製造企業  
**KSD ELECTRONIC TECHNOLOGY Co., LTD**

TOLERANCE UNLESS OTHERWISE STATED:  
 Up to 5 ±0.2  
 Above 5 ~ 15 ±0.3  
 Above 15 ~ 30 ±0.4  
 Above 30 ~ 50 ±0.5  
 Angle ±0.3°

3RD. ANGEL'S

UNITS MM

DRAWN BY:	DATE	MAT'L	TITLE	JACK
Jack Lu	06/07/22		MODLE	OPTICAL JACK (接收端)
CHECKED BY:	DATE	FINISH	DWG NO.	OJ-0015S-RXx-S214
Jacky Chen	06/07/22		PART NO.	OJ-0015S-RXx-S214
APPROVED BY:	DATE	SCALE	SHEET NO.	1 of 1
Tony Kao	06/07/22	1:1		

ITEM NO.	DESCRIPTION	DRAWN	DATE
3	更新MINOR HOUSING材質顏色	Jack	060722
2	更新傳輸速率選項	Jack	112219
1	新增傳輸速率選項	Jack	103018