



PH-B12-x1xxx-S304

Insulator Material: 0 : PBT
3 : PA6T

PIN數

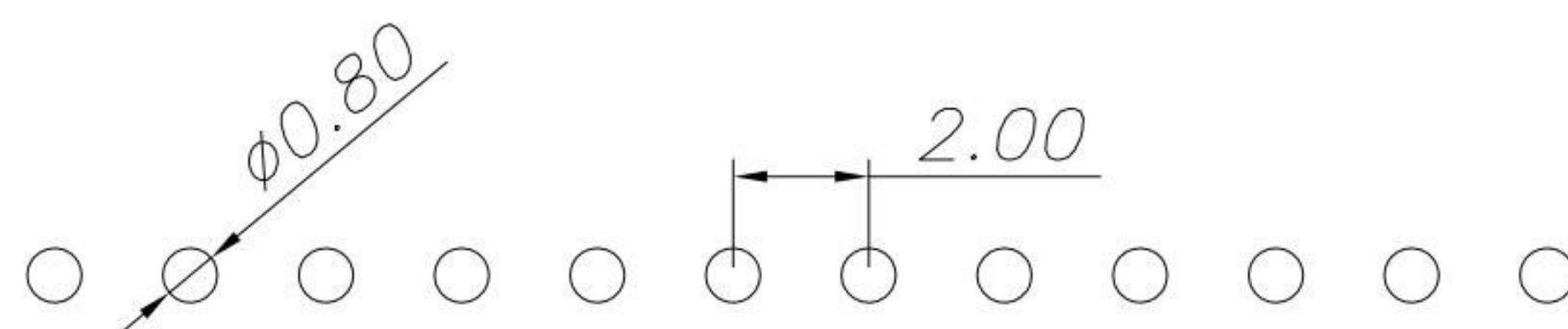
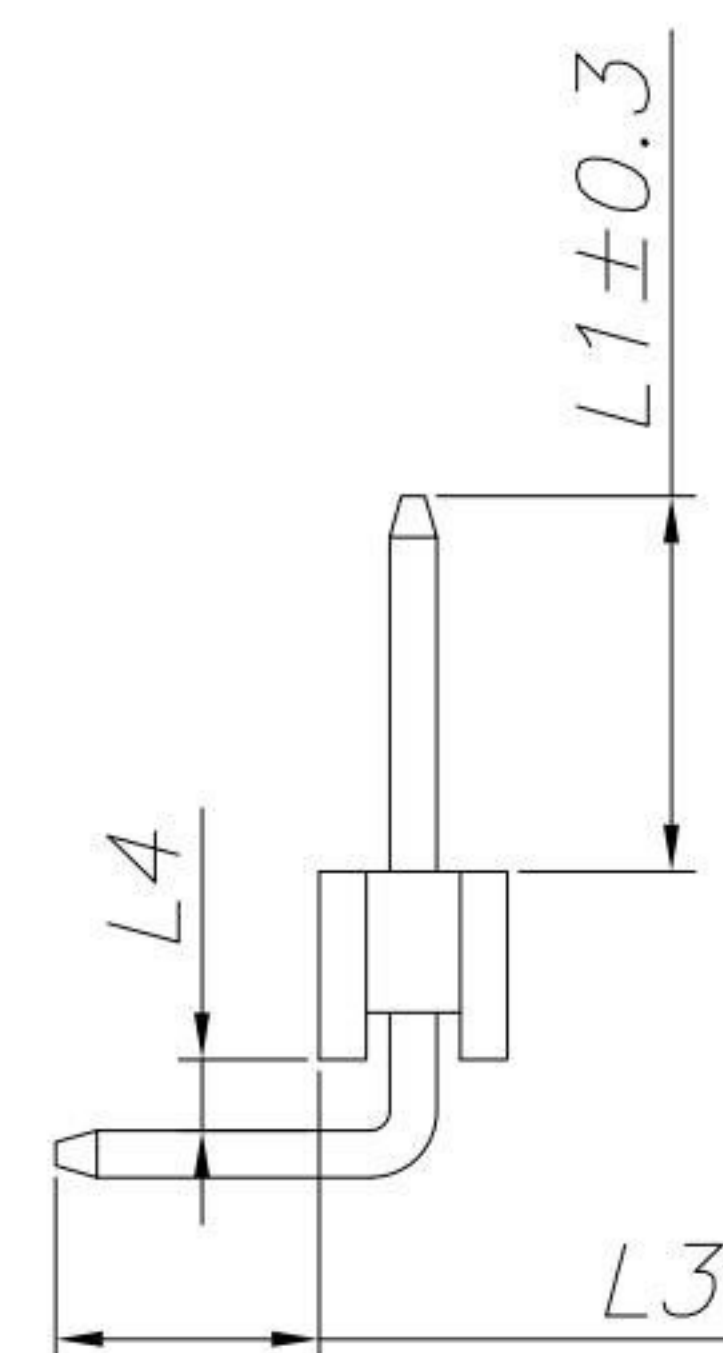
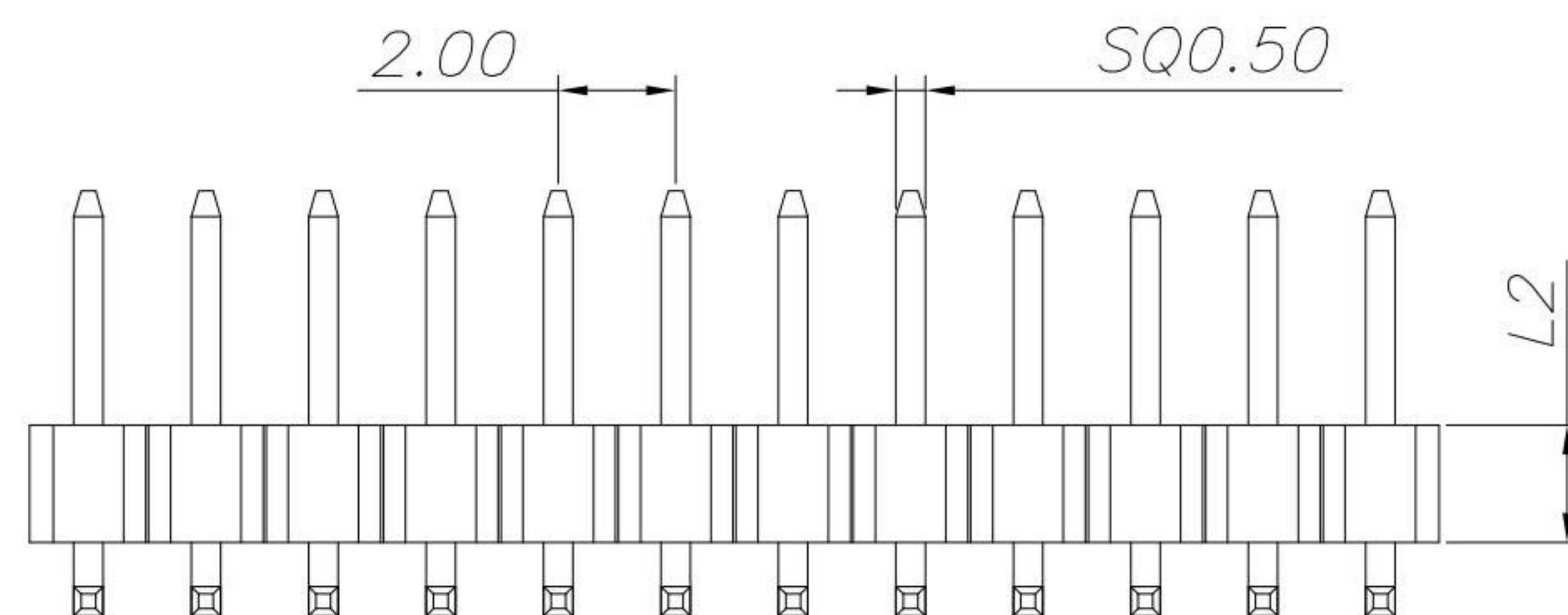
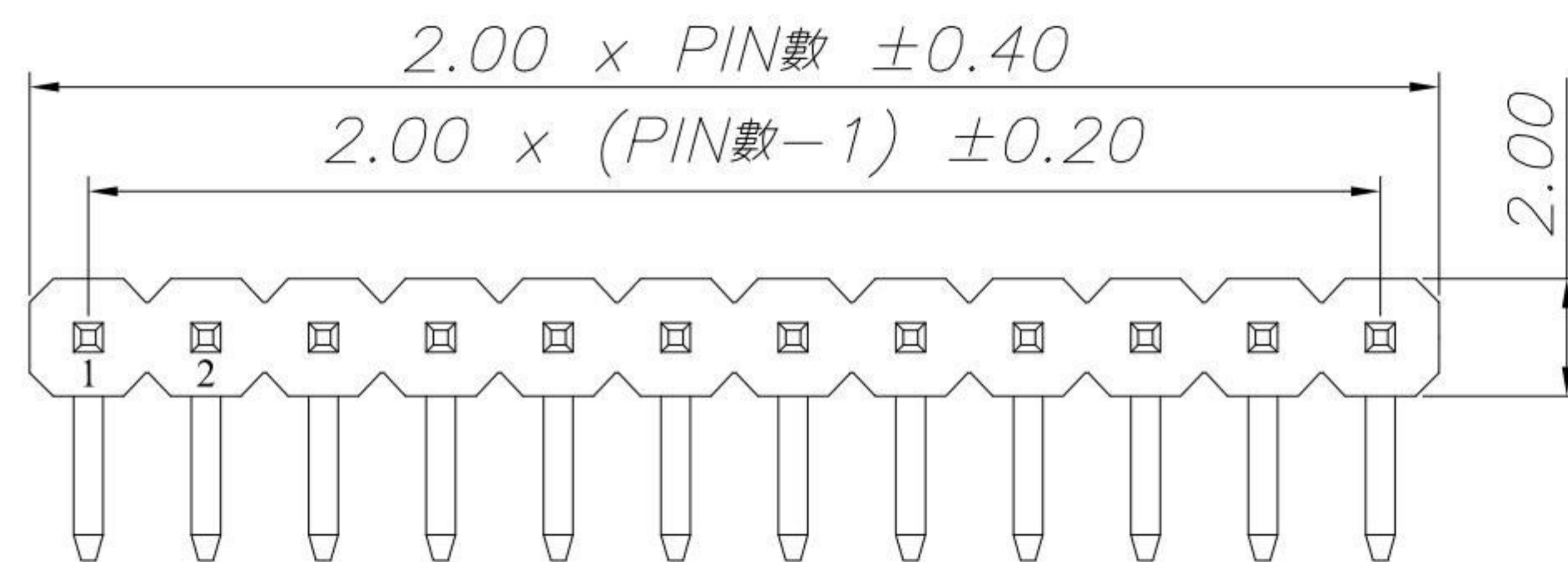
	L1	L2	L3	L4
A	4.00	2.00	2.80	0.75
B	3.00	2.00	2.00	0.75
C	3.50	2.00	3.00	0.75
D	2.75	2.00	4.00	0.80

Specifications:

- 1.Current Rating : 2.0 A
- 2.Insulator Resistance : 1,000 MΩ Min.
- 3.Contact Resistance : 20 mΩ Min.
- 4.Operating Temperature : -40°C ~ +105°C

Materials:

- 1.Contact : Brass
- 2.Insulator : PBT / PA6T
- 3.Contact Plating : Gold over Nickel

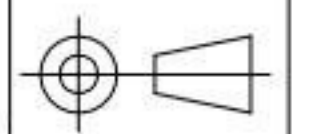


PCB. LAYOUT

KSD 科斯达电子科技有限公司
SWITCH CONNECTOR KSD ELECTRONIC TECHNOLOGY Co., LTD
全球 互联零组件制造企业

TOLERANCE UNLESS OTHERWISE STATED:
Up to 5 ±0.2
Above 5 ~ 15 ±0.3
Above 15 ~ 30 ±0.4
Above 30 ~ 50 ±0.5
Angle ±0.3

3RD. ANGEL'S



UNITS

MM

DRAWN BY: Jack Lu
DATE: 05/05/21
CHECKED BY: Jacky Chen
DATE: 05/05/21
APPROVED BY: Tony Kao
DATE: 05/05/21

MAT'L	TITLE	PIN HEADER	
FINISH	MODLE	2.0 PIN HEADER 90度 DIP	
SCALE	DWG NO.	PH-B12-x1xxx-S304	SIZE A4
SHEET NO.	PART NO.	PH-B12-x1xxx-S304	VER R4

ITEM NO.	DESCRIPTION	DRAWN	DATE
4	新增選項	Jack	050521
3	新增選項	Jack	030821
2	新增選項	Jack	062719
1	更新算式	Jack	101518