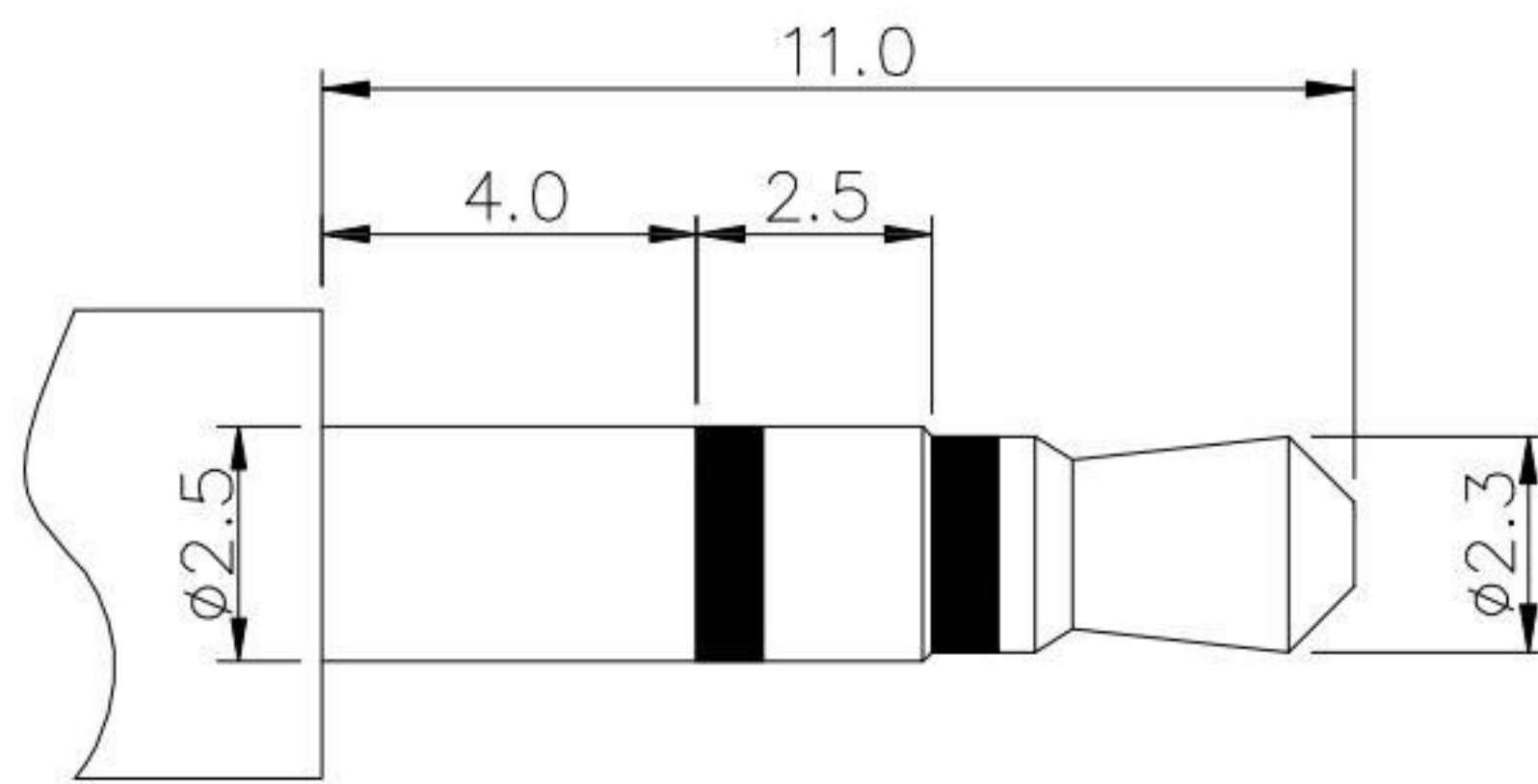
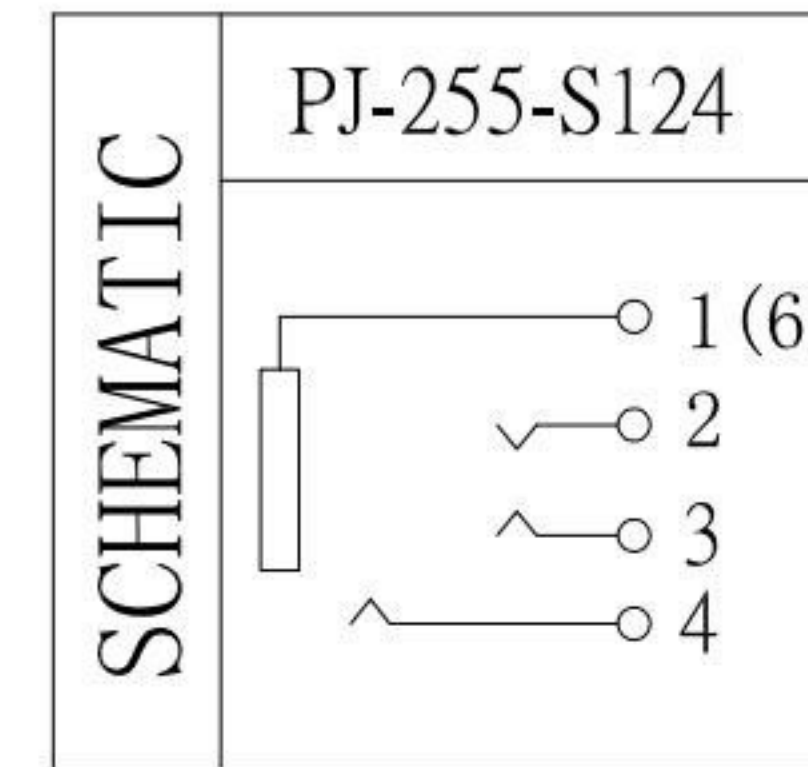
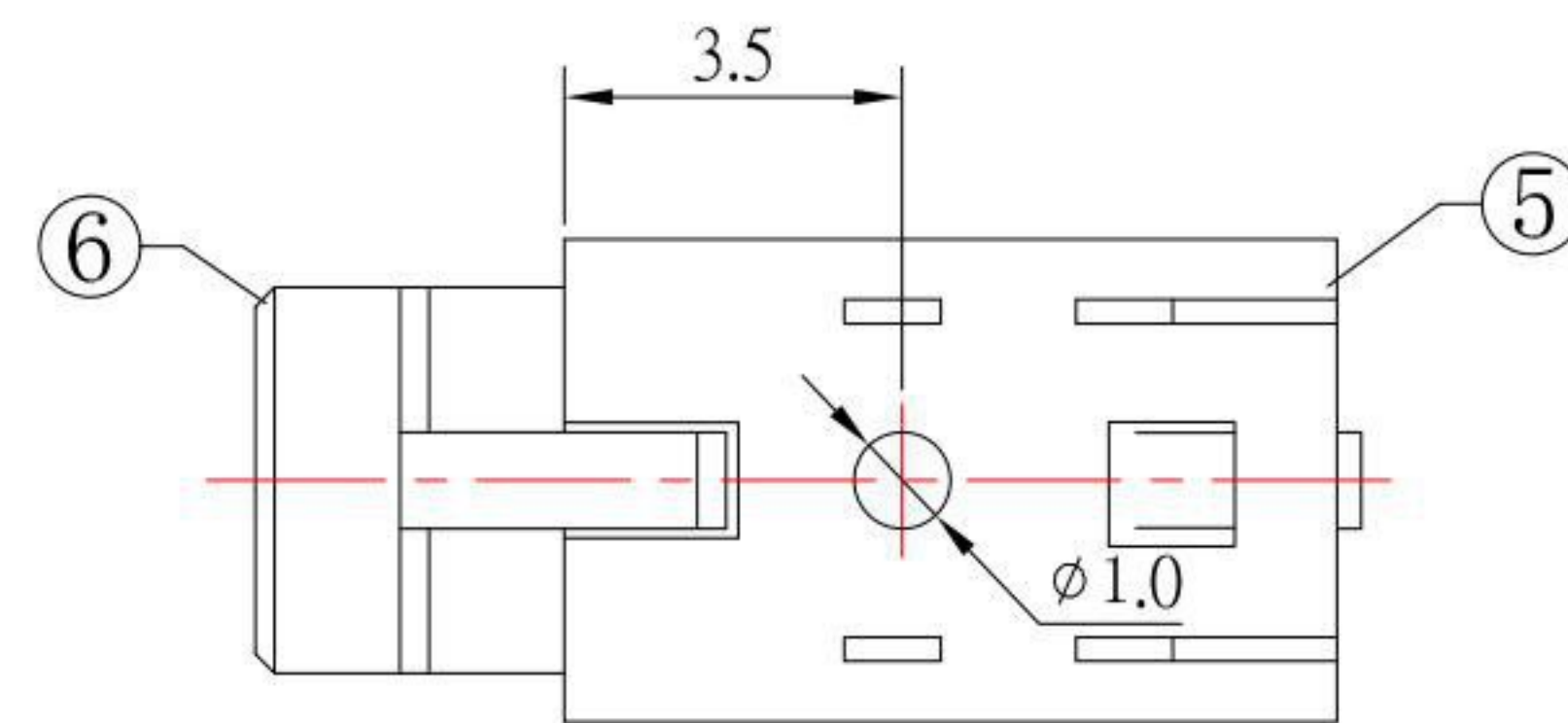


P. C. B LAYOUT
TOP VIEW



ø2.50mm 3 POLE PLUG



SPECIFICATION

- 1. Rating : DC 30V 0.5A
- 2. Contact resistance : $\leq 30m\Omega$
- 3. Insulation resistance : $\geq 100M\Omega$
- 4. Withstand voltage : 500VAC
- 5. Insertion and extraction force : 3-30N
- 6. life test : 5,000 cycles

NO.	DESCRIPTION	QTY	MATERIAL	PLATING
⑥	AXIS SUPPORT	1	BRASS	Ni-Plating
⑤	HOUSING	1	PBT	
④	4# CONTACT FOOT	1	PHOSPHOR BRONZE	Sn-Plating
③	3# CONTACT FOOT	1	PHOSPHOR BRONZE	Sn-Plating
②	2# CONTACT FOOT	1	PHOSPHOR BRONZE	Sn-Plating
①	1# CONTACT FOOT	1	PHOSPHOR BRONZE	Sn-Plating

KSD 科斯达电子科技有限公司
SWITCH CONNECTOR KSD ELECTRONIC TECHNOLOGY Co., LTD
全球 互联零组件制造企业

TOLERANCE UNLESS OTHERWISE STATED:
Up to 5 ±0.2
Above 5 ~ 15 ±0.3
Above 15 ~ 30 ±0.4
Above 30 ~ 50 ±0.5
Angle ±0.3°

3RD. ANGEL'S

UNITS MM

DRAWN BY:	DATE	MAT'L	TITLE	JACK
Jack Lu	07/18/19			
CHECKED BY:	DATE	FINISH	MODLE	PHONE JACK
Jacky Chen	07/18/19			
APPROVED BY:	DATE	SCALE	DWG NO.	PJ-255-S124
Tony Kao	07/18/19	1:1		
SHEET NO.	1 of 1	PART NO.	PJ-255-S124	

ITEM NO.	DESCRIPTION	DRAWN	DATE
1	新增公差及PLUG图示	Jack	071819