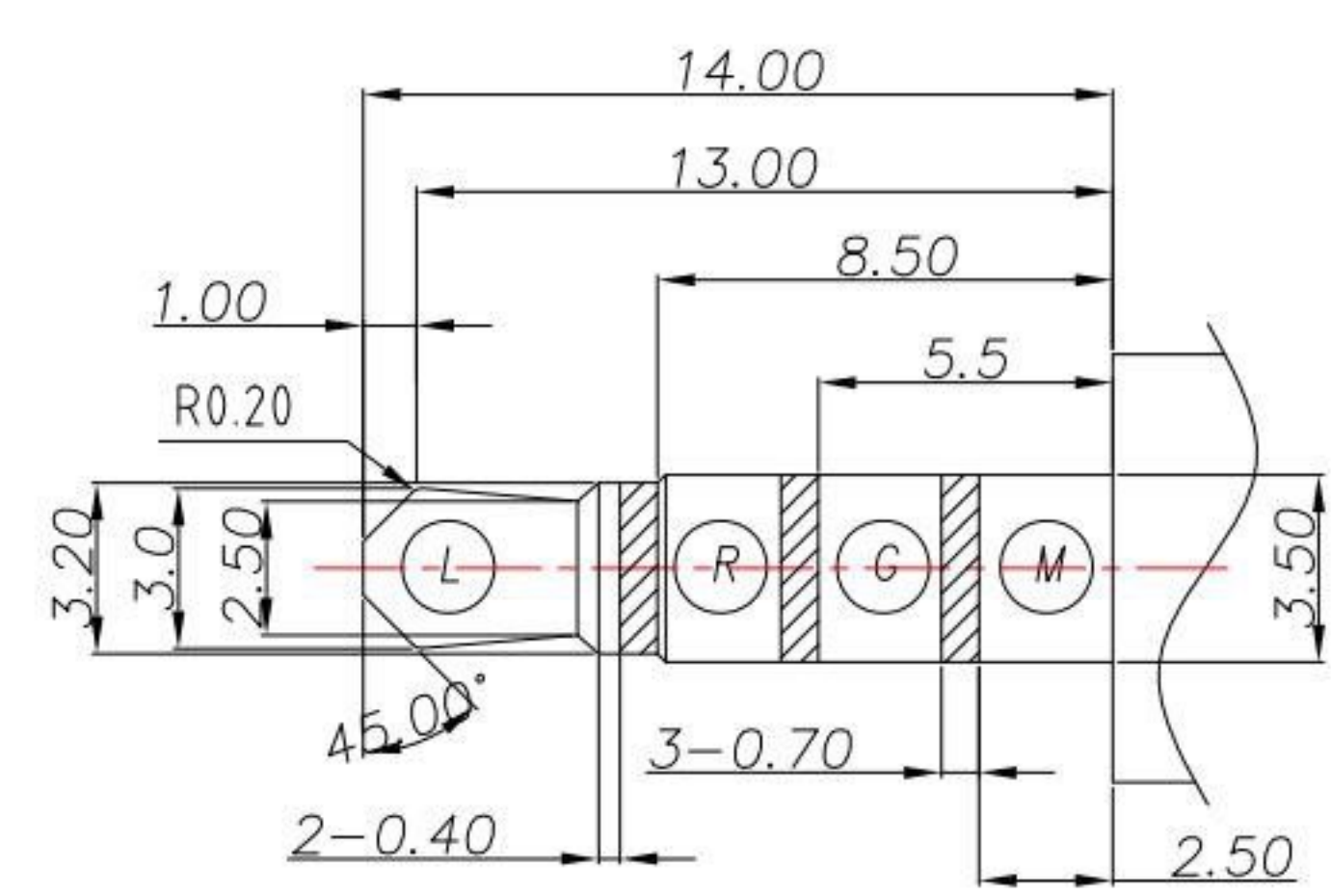
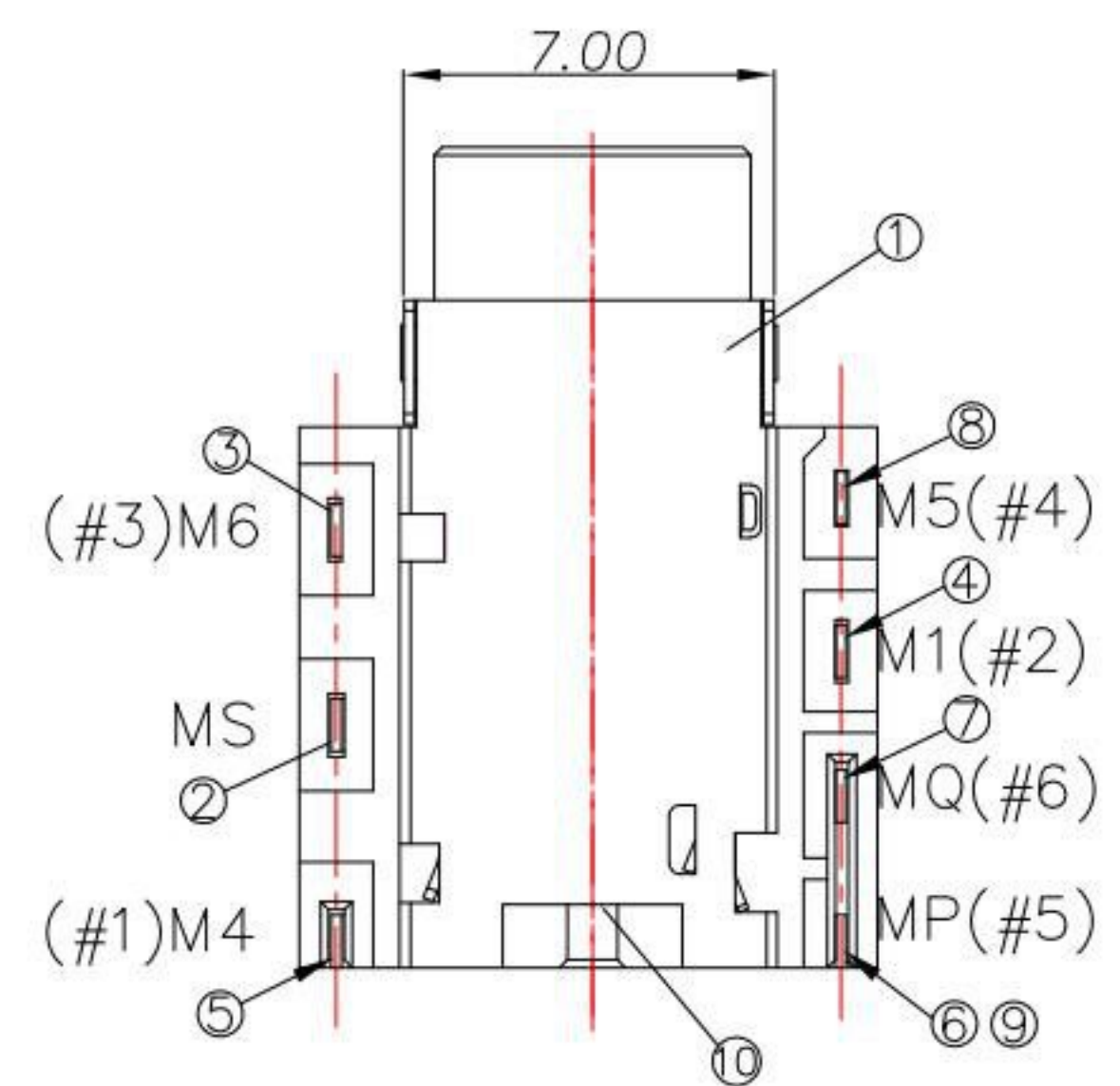


P.C.B LAYOUT TOP VIEW



SCHEMATIC	
	•M6(#3)G/M
	✓M4(#1)L/R
	△MP(#5)
	⤴MQ(#6)
	∧M1(#2)R/L
	∩M5(#4)M/G

- SPECIFICATION**
- Contact resistance : $\leq 50m\Omega$
 - Insulation resistance : $\geq 100M\Omega$
 - Withstand voltage : 250VAC
 - Insertion and extraction force : 3-30N
 - life test : 5,000 cycles

ITEM	DESCRIPTIONs	MATERIAL	FINISH	Q'TY
⑩	DUMMY PIN	STAINLESS STEEL	-	1
⑨	SEPARATOR	PA9T	BLACK	1
⑧	M5_CONTACT	C5210	GOLD FLASH ON CONTACT AREA.AND SOLDER AREA ALL OVER Ni	1
⑦	MQ_SHUNT	C5210		1
⑥	MP_CONTACT	C5210		1
⑤	M4_CONTACT	C5210		1
④	M1_CONTACT	C5210		1
③	M6_CONTACT	C5210	Ni	1
②	MS_SHELL	C5210	BLACK	1
①	P1_HOUSING	PA9T	BLACK	1

KSD 科斯达电子科技有限公司
 SWITCH CONNECTOR KSD ELECTRONIC TECHNOLOGY Co., LTD
 全球 互 联 零 组 件 制 造 企 业

TOLERANCE UNLESS OTHERWISE STATED:
 Up to 5 ±0.2
 Above 5 ~ 15 ±0.3
 Above 15 ~ 30 ±0.4
 Above 30 ~ 50 ±0.5
 Angle ±0.3

3RD. ANGEL'S

UNITS MM

DRAWN BY:	DATE	MAT'L	TITLE	JACK
Jack Lu	10/31/19		MODLE	PHONE JACK
CHECKED BY:	DATE	FINISH	DWG NO.	PJ-S3R4A7-S214
Jacky Chen	10/31/19		SHEET NO.	1 of 1
APPROVED BY:	DATE	SCALE	PART NO.	PJ-S3R4A7-S214
Tony Kao	10/31/19	1:1		

ITEM NO.	DESCRIPTION	DRAWN	DATE