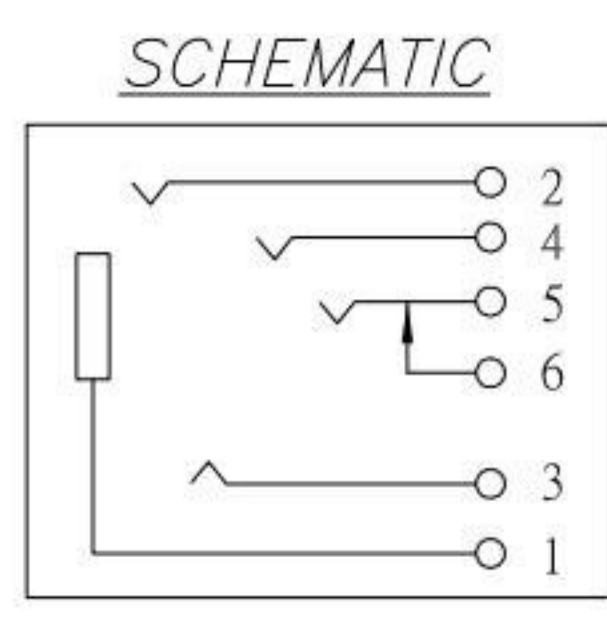
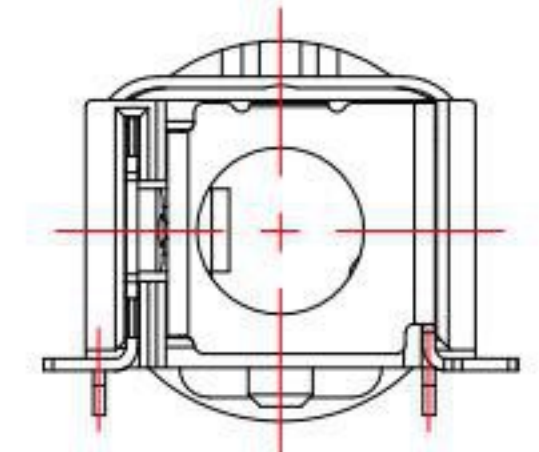
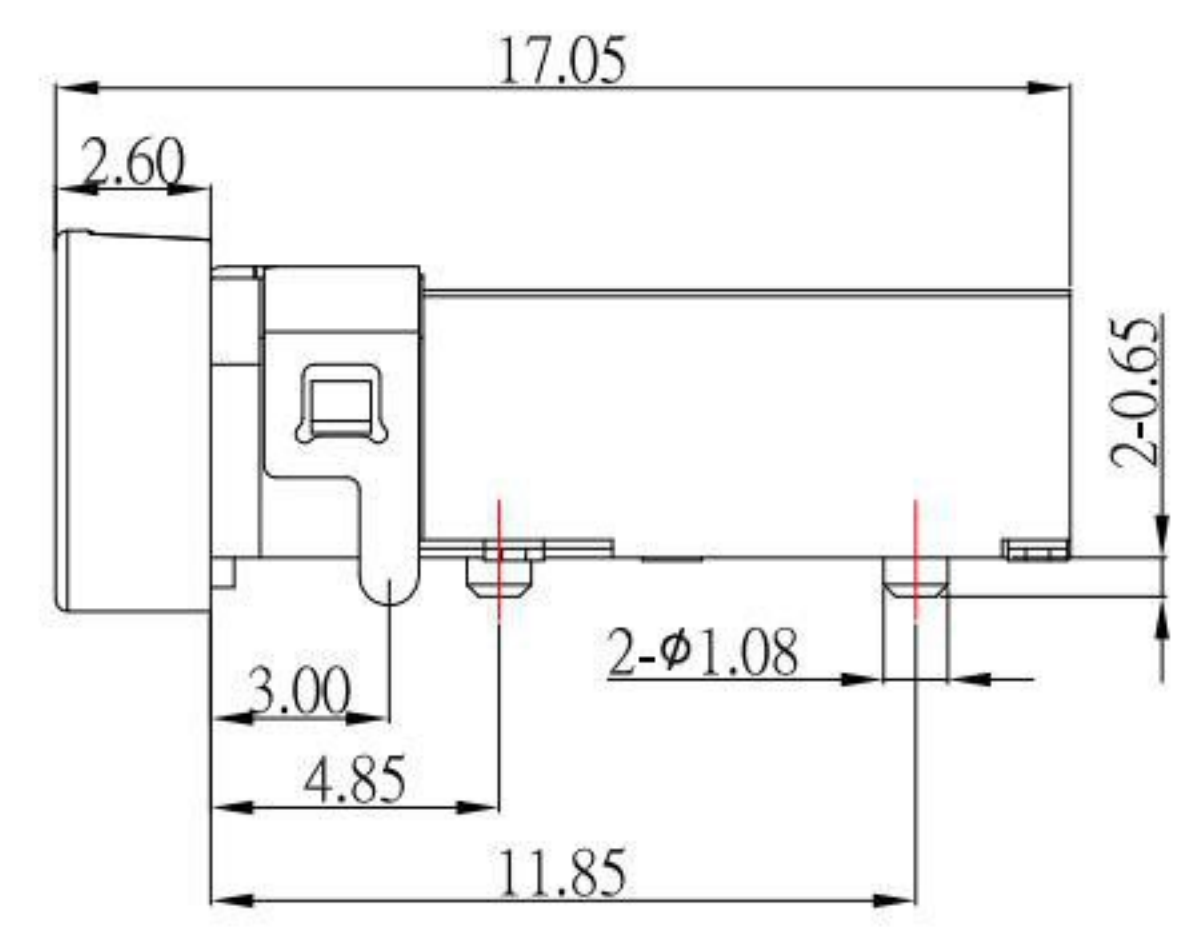
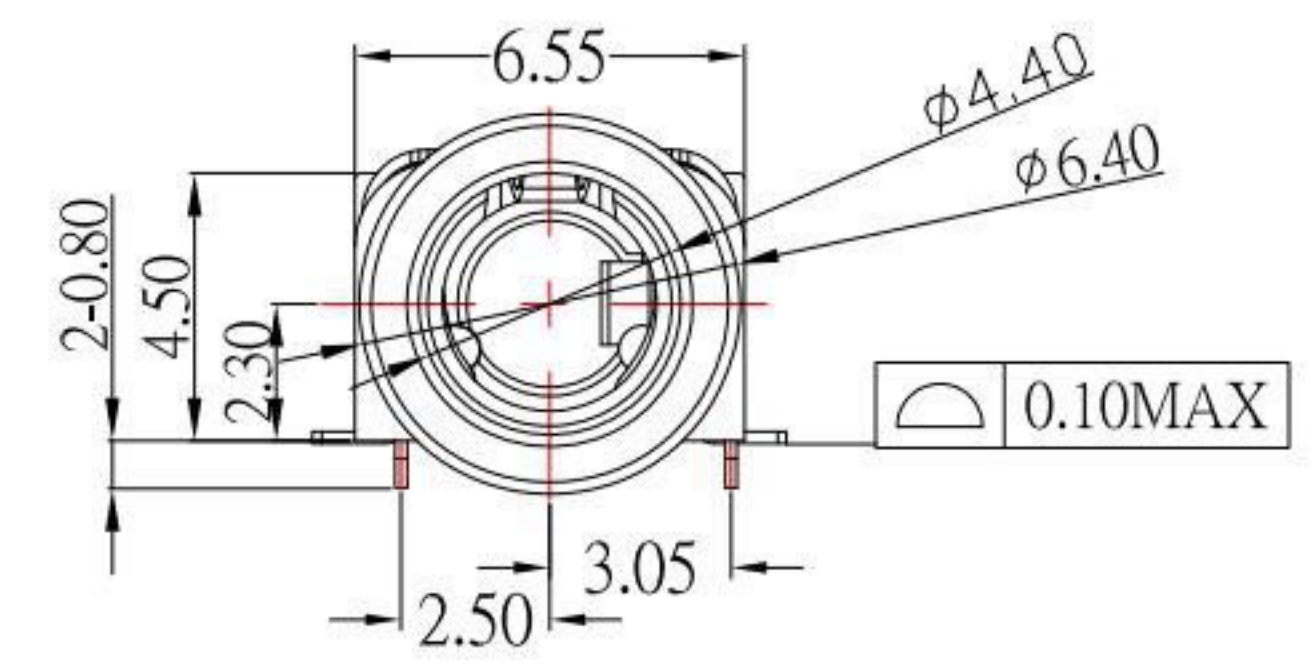
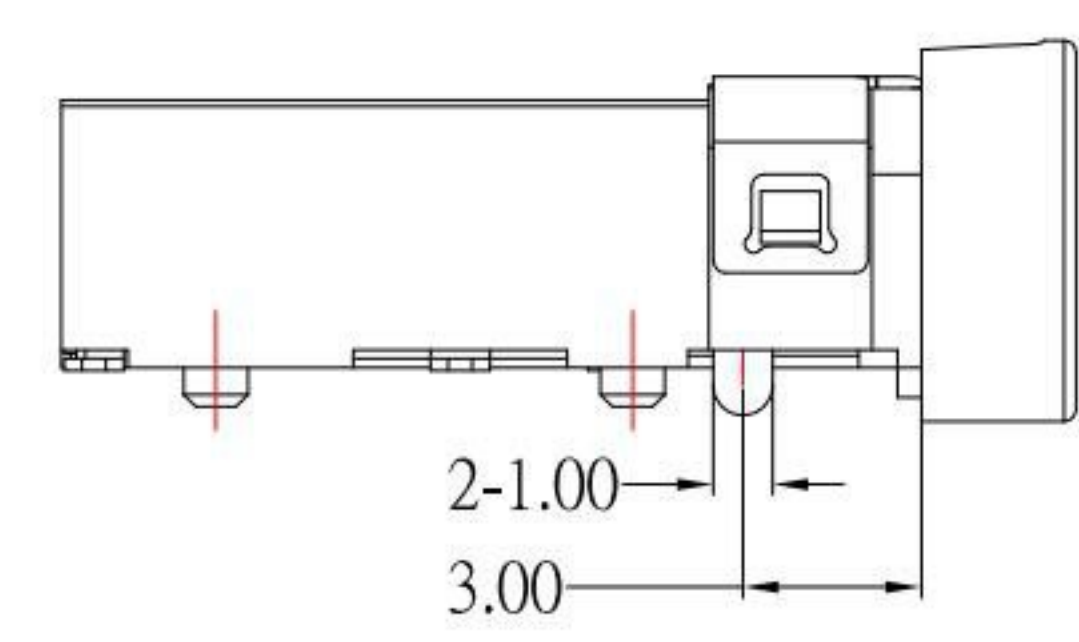
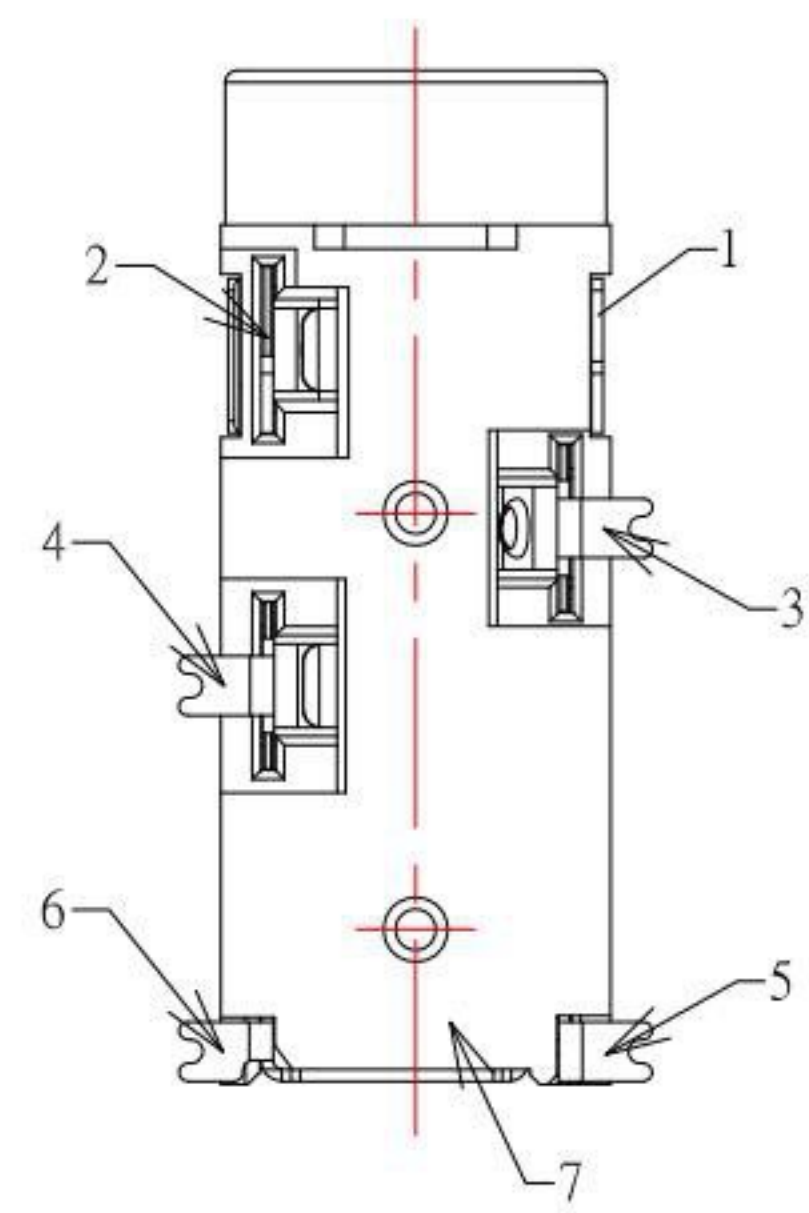


(φ3.50mm POLE PLUG DETAIL DRAWING)

P.C.B LAYOUT MOUNTING PATTERN (TOP VIEW)



- SPECIFICATION**
1. Rating : DC 12V , 1.0A ;
 2. Contact resistance : ≤ 100mΩ ;
 3. Insulation resistance : ≥ 1000MΩ ;
 4. Withstand voltage : 500VAC ;
 5. Insertion and extraction force : 3-30N
 6. life test : 5,000 cycles °



ITEM	NAME	Q'TY	DESCRIPTION
7	HOUSING	1	HIGH TEMPERATURE;COLOR BLACK
6	TERMINAL 6#	1	PHOSPHOR BRONZE; NICKEL UNDER PLATING OVERALL;GOLD FLASH PLATING ON SOLDER AREA ;GOLD FLASH PLATING ON CONTACT AREA
5	TERMINAL 5#	1	STAINLESS STEEL; NICKEL UNDER PLATING OVERALL;GOLD FLASH PLATING ON SOLDER AREA ;GOLD FLASH PLATING ON CONTACT AREA
4	TERMINAL 4#	1	PHOSPHOR BRONZE; NICKEL UNDER PLATING OVERALL;GOLD FLASH PLATING ON SOLDER AREA ;GOLD FLASH PLATING ON CONTACT AREA
3	TERMINAL 3#	1	PHOSPHOR BRONZE; NICKEL UNDER PLATING OVERALL;GOLD FLASH PLATING ON SOLDER AREA ;GOLD FLASH PLATING ON CONTACT AREA
2	TERMINAL 2#	1	PHOSPHOR BRONZE; NICKEL UNDER PLATING OVERALL;GOLD FLASH PLATING ON SOLDER AREA ;GOLD FLASH PLATING ON CONTACT AREA
1	TERMINAL 1#	1	STAINLESS STEEL; NICKEL UNDER PLATING OVERALL;GOLD FLASH PLATING OVERALL;

KSD 科斯达电子科技有限公司
 SWITCH CONNECTOR KSD ELECTRONIC TECHNOLOGY Co., LTD
 全球 互联网组件制造企业

TOLERANCE UNLESS OTHERWISE STATED:
 Up to 5 ±0.2
 Above 5 ~ 15 ±0.3
 Above 15 ~ 30 ±0.4
 Above 30 ~ 50 ±0.5
 Angle ±0.3°

3RD. ANGEL'S

UNITS MM

DRAWN BY:	DATE	MAT'L	TITLE	JACK
Jack Lu	05/29/21			
CHECKED BY:	DATE	FINISH	MODLE	3.5 PHONE JACK 5 POLES
Jacky Chen	05/29/21			
APPROVED BY:	DATE	SCALE	DWG NO.	PJ-S53062-S214
Tony Kao	05/29/21	1:1		
SHEET NO.		1 of 1	PART NO.	PJ-S53062-S214

ITEM NO.	DESCRIPTION	DRAWN	DATE
1	更新圖面	Jack	052921