

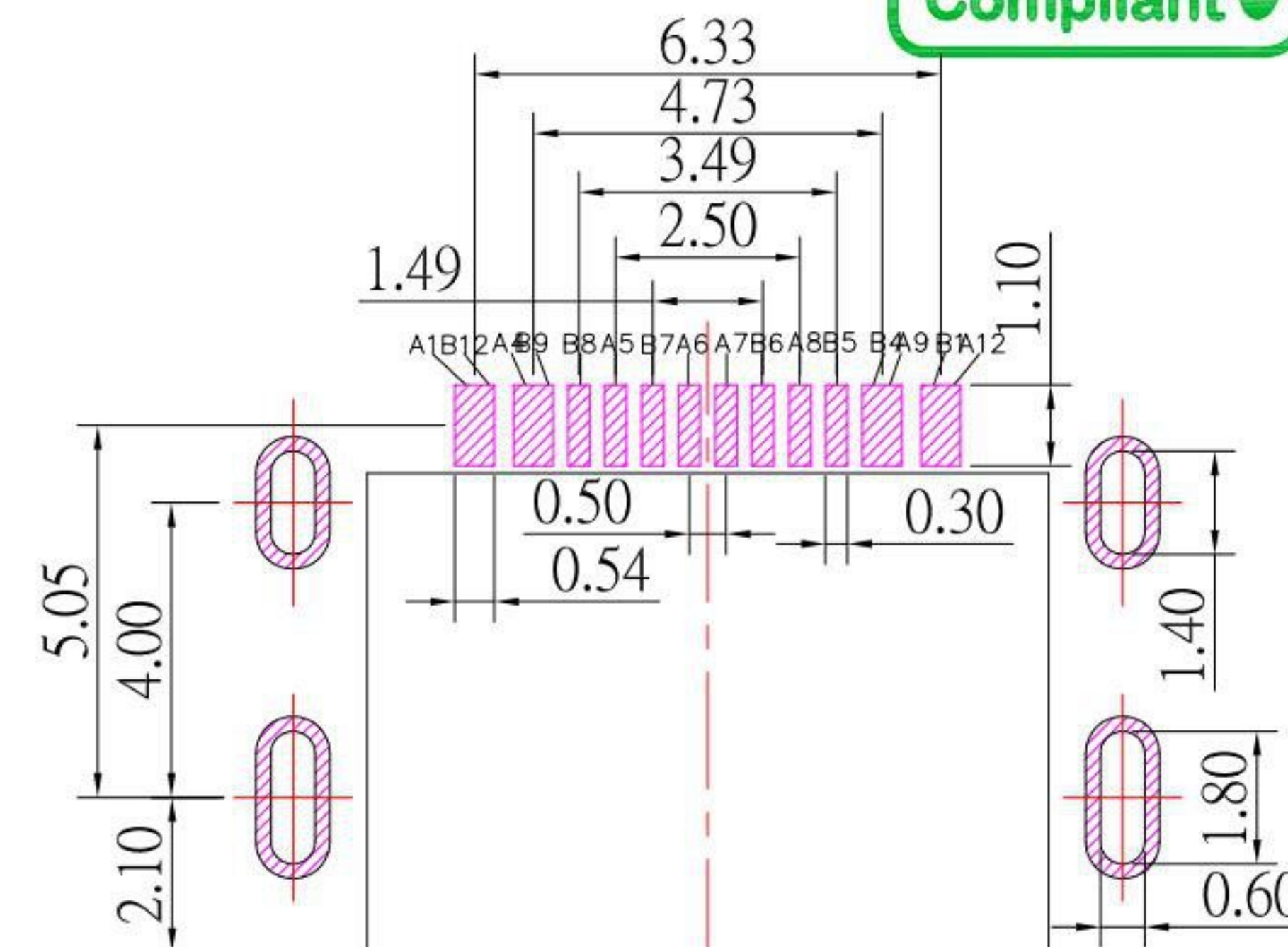
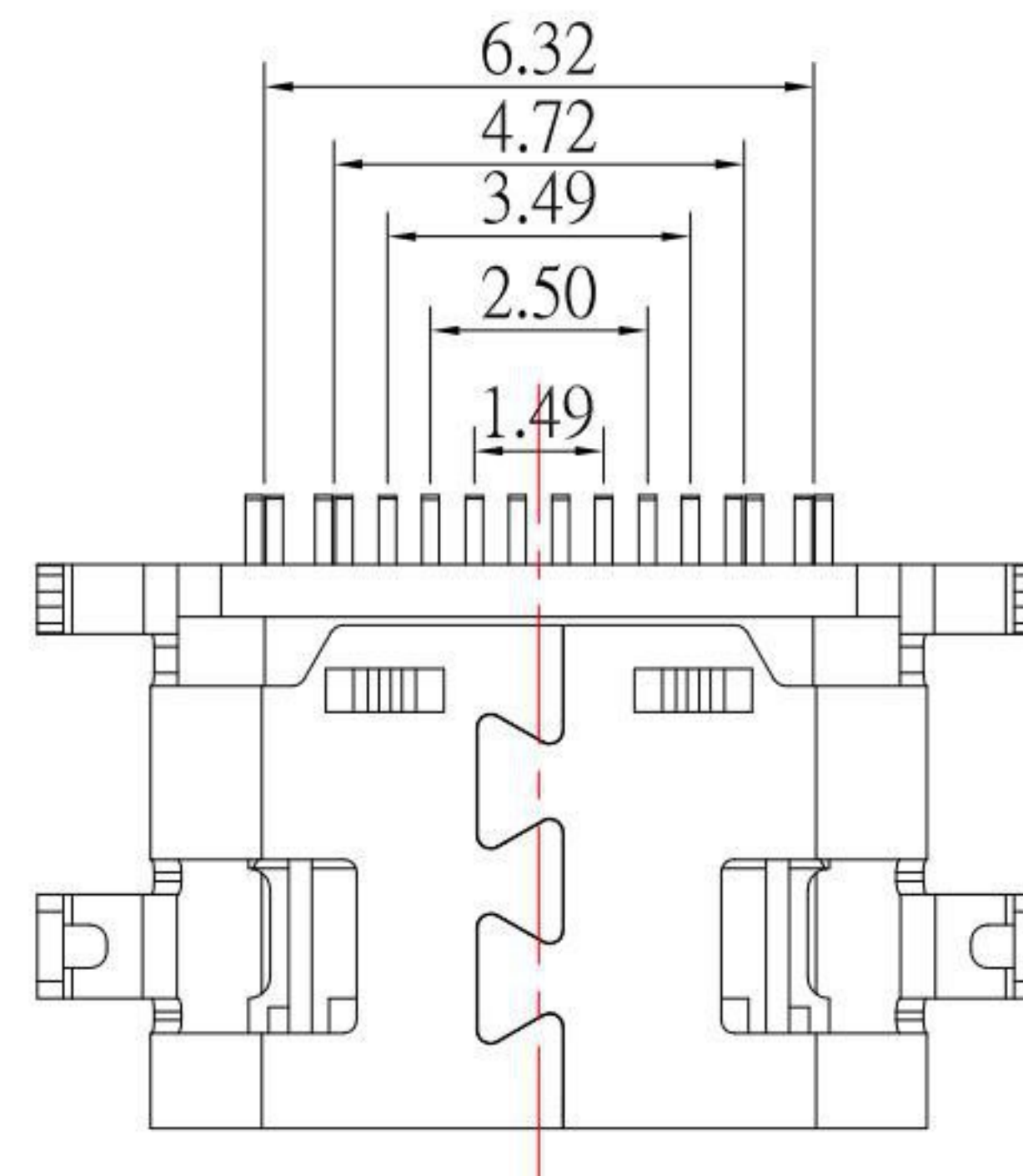
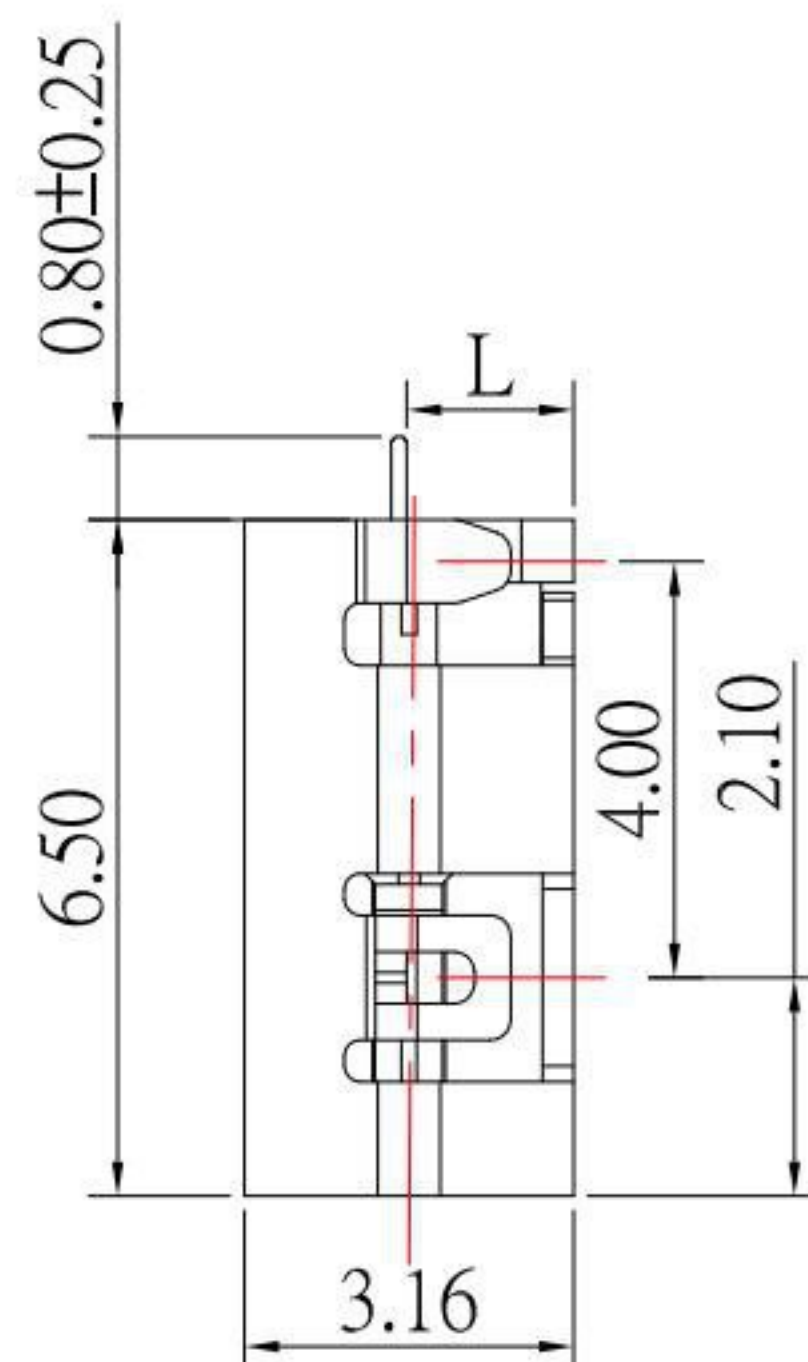
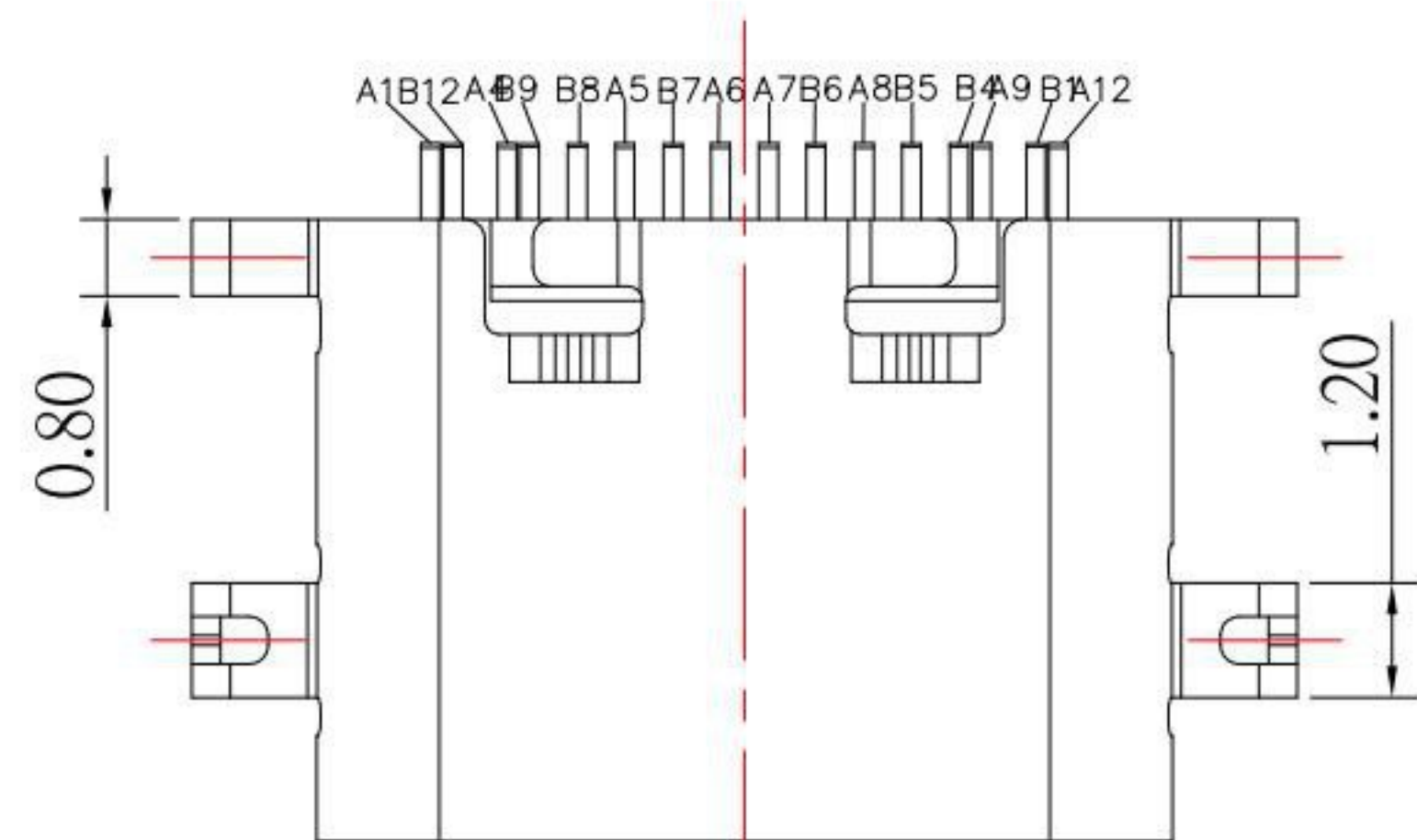
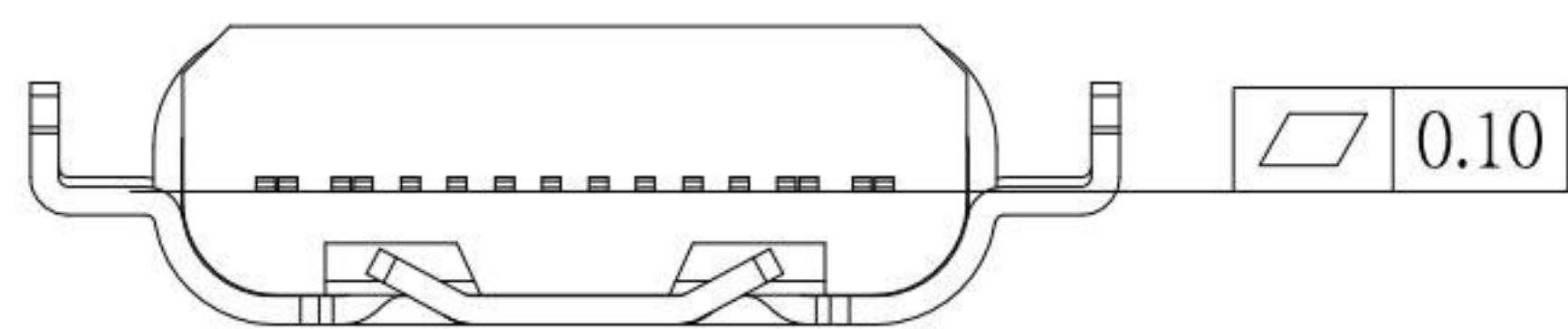


SBC-160M15x-20x-S410

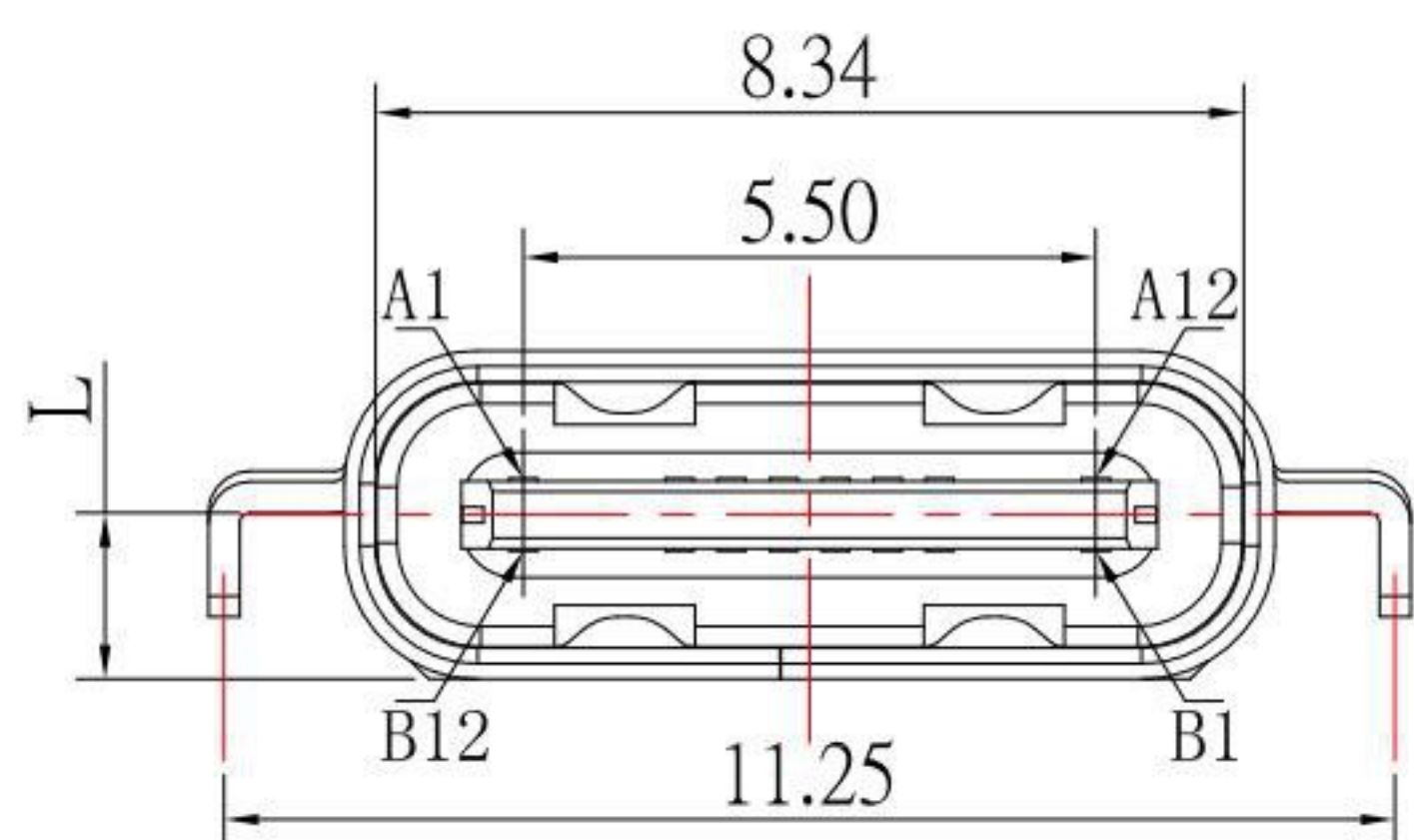
	A	B	C	D
L	0.80	1.00	1.20	1.60

鍍層厚度:

Blank	: 1u"
2	: 15u"
3	: 30u"



RECOMMENDED P.C.B. LAYOUT



A1	GND	B12	GND
A2		B11	
A3		B10	
A4	VBUS	B9	VBUS
A5	CC1	B8	SBU 2
A6	D+	B7	D-
A7	D-	B6	D+
A8	SBU1	B5	CC 2
A9	VBUS	B4	VBUS
A10		B3	
A11		B2	
A12	GND	B1	GND

SPECIFICATIONS

Electrical:

- 1.Rating: 5.0 A
- 2.Dielectric Withstand Voltage: 100V AC
- 3.Contact Resistance: 40 mΩ Max
- 4.Insulation Resistance: 100 MΩ Min

Mechanical:

- 1.Connector Mate and Unmate Force
 - 1.1 Mate force: 5~20 N
 - 1.2 Unmate force: 8~20 N

Material:

- 1.Housing: LCP
- 2.Contact: C7025
- 3.Shell: SUS

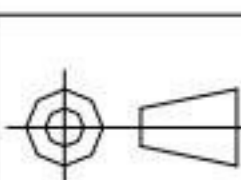
Finish:

- 1.Contact: Plated Gold in Mating Area ;
Gold Plated on Solder Balls ;
Nickel under plated overall
- 2.Shell: Nickel under Plated surface layer

KSD 科斯达电子科技有限公司
 SWITCH CONNECTOR KSD ELECTRONIC TECHNOLOGY Co., LTD
 全球 互聯零組件 制造企业

TOLERANCE UNLESS OTHERWISE STATED:
 Up to 5 ±0.2
 Above 5 ~ 15 ±0.3
 Above 15 ~ 30 ±0.4
 Above 30 ~ 50 ±0.5
 Angle ±0.3°

3RD. ANGEL'S



UNITS

MM

DRAWN BY:	DATE
Jack Lu	08/18/22
CHECKED BY:	DATE
Jacky Chen	08/18/22
APPROVED BY:	DATE
Tony Kao	08/18/22

MAT'L	TITLE	CONNECTOR
FINISH	MODLE	USB C TYPE 2.0 母座沉板
SCALE	DWG NO.	SBC-160M15x-20x-S410
SHEET NO.	PART NO.	SBC-160M15x-20x-S410
1 : 1		
1 of 1		

1	更新材質:Housing: LCP	Jack	081822
ITEM NO.	DESCRIPTION	DRAWN	DATE