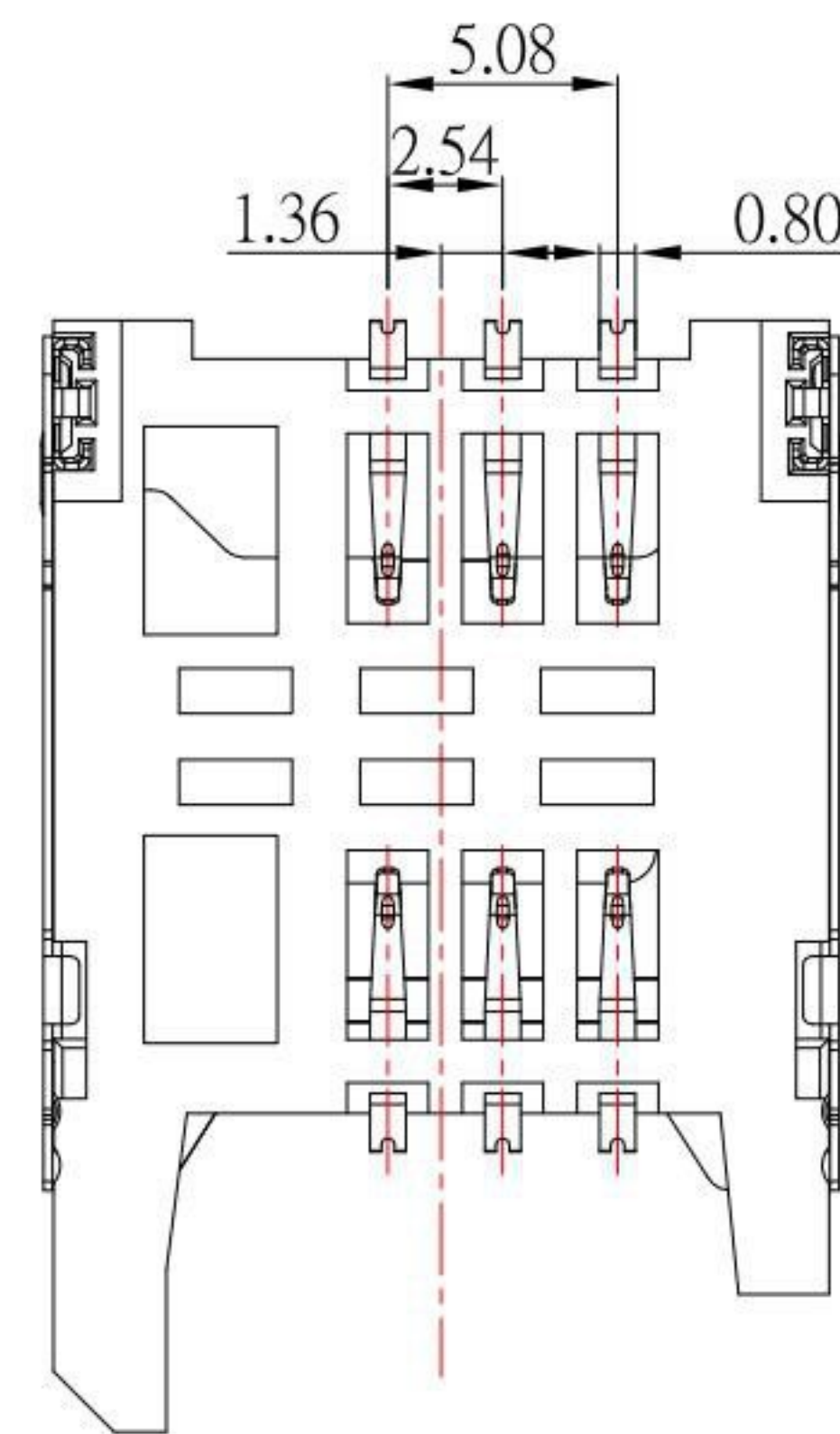
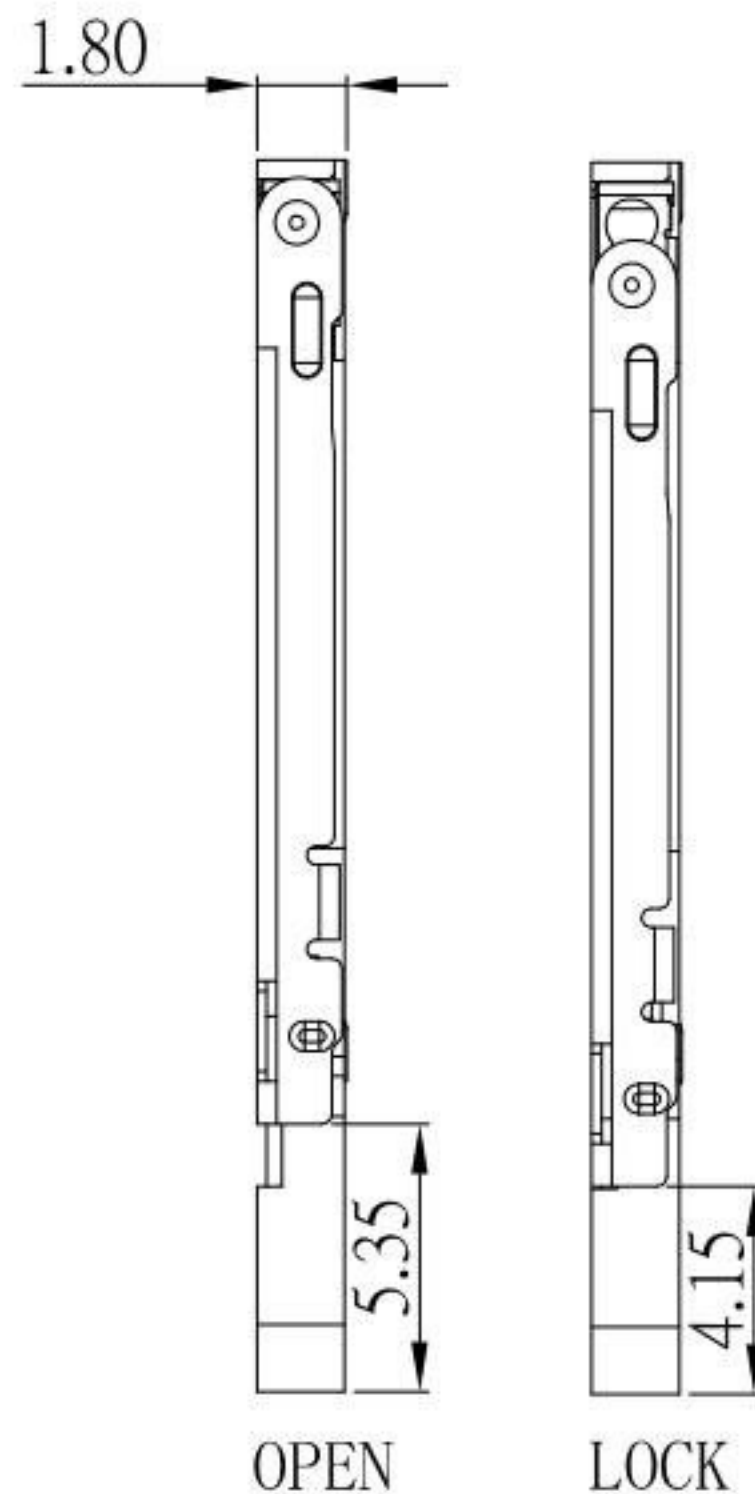
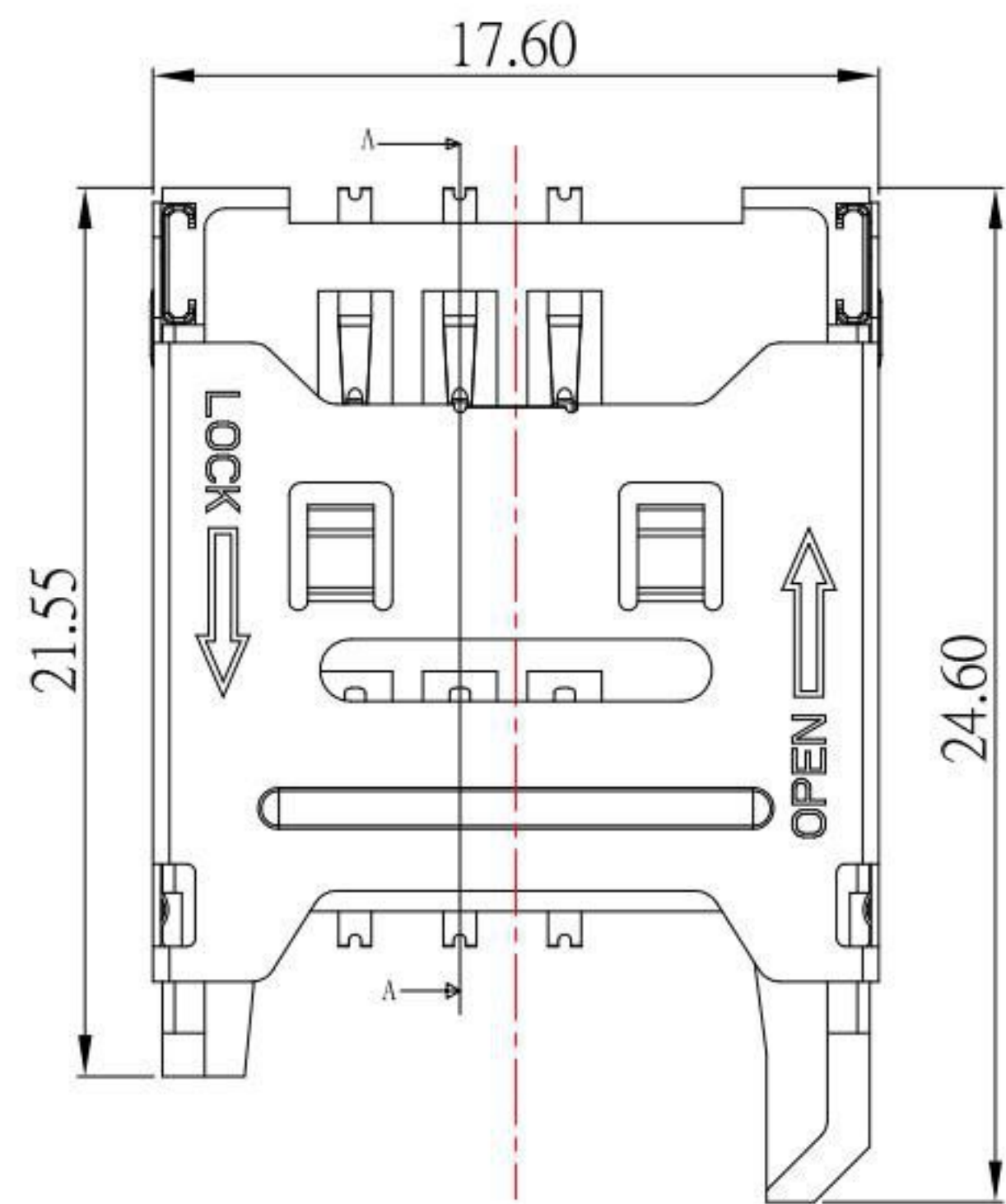
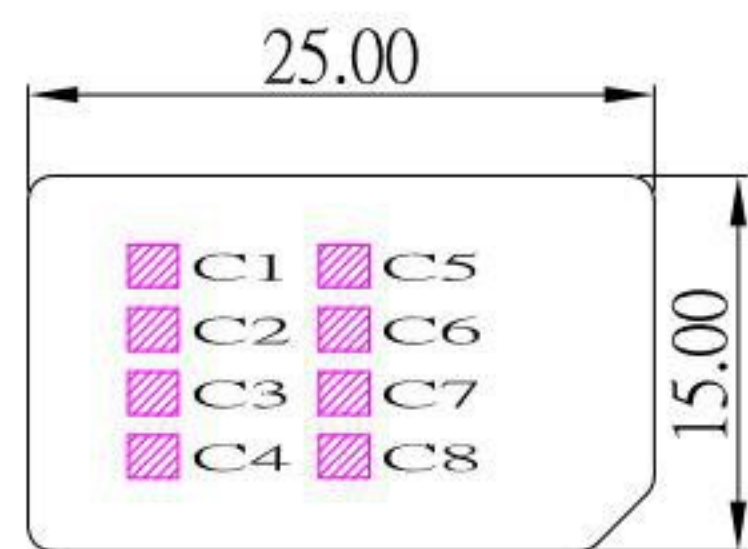
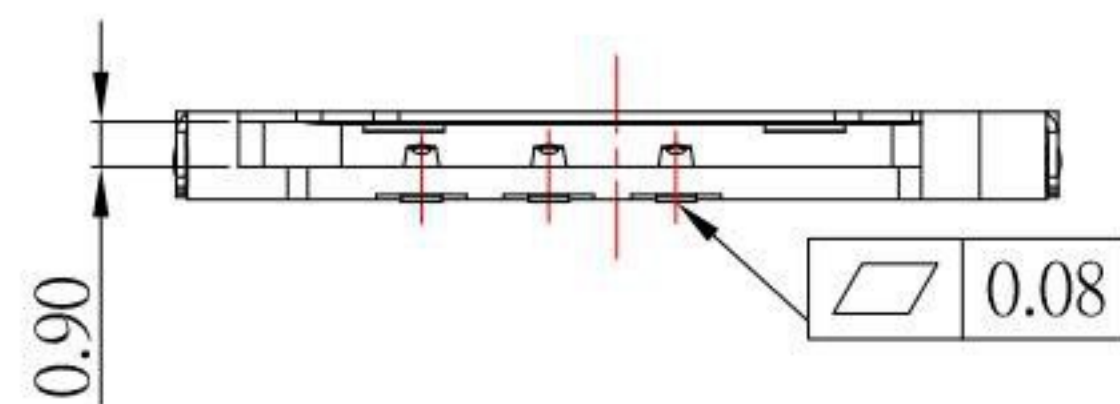


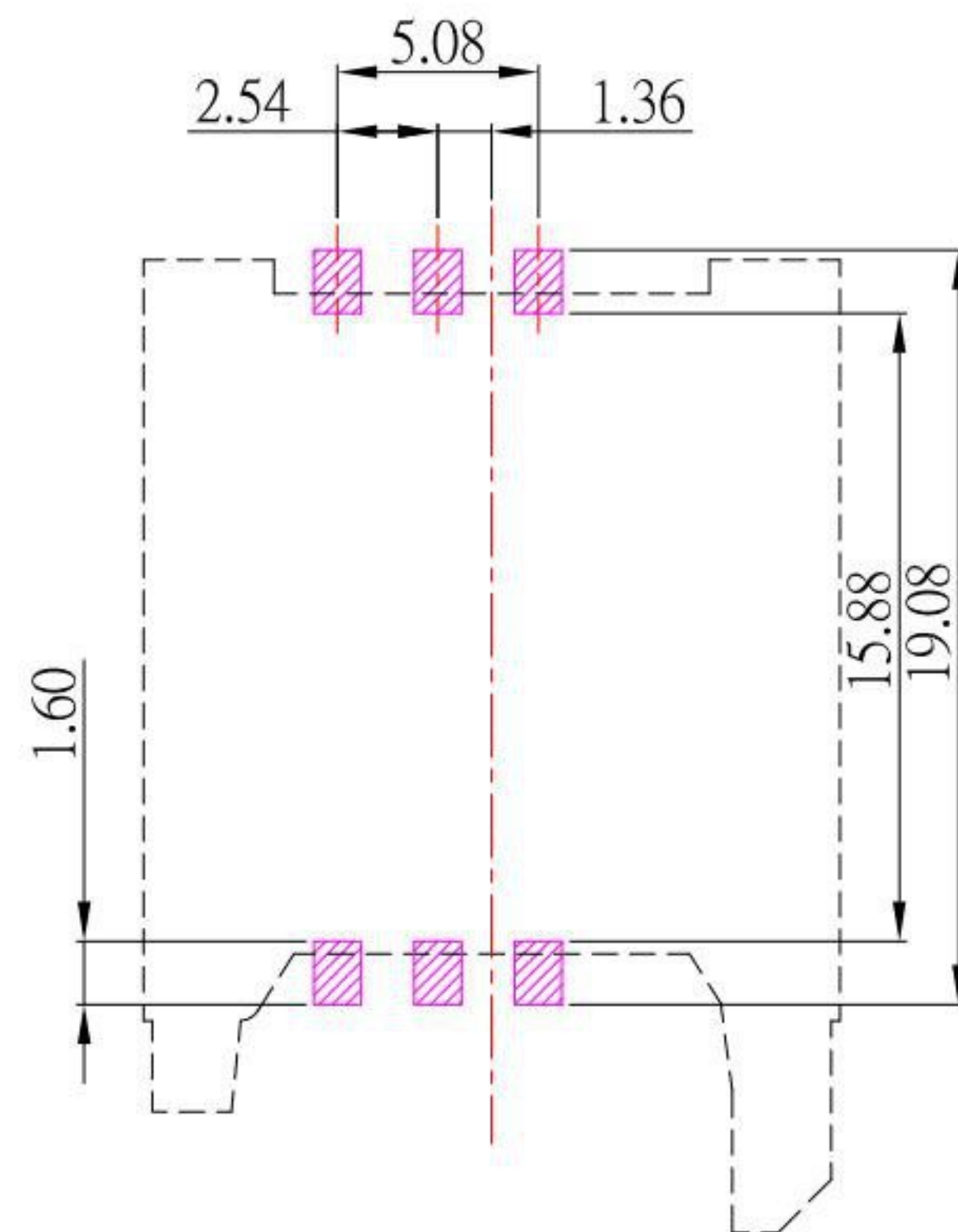
SECTION A-A



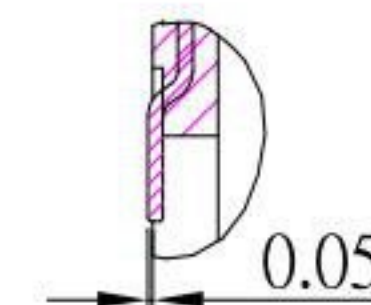
PIN NO.	PIN NAME
C 1	Supply Voltage Vcc
C 2	Reset (RST)
C 3	Clock (CLK)
C 4	N/A
C 5	Ground
C 6	Programming Voltage Vpp
C 7	I/O
C 8	N/A



SIM CARD



P.C.B LAYOUT MOUNTING PATTERN
TOP VIEW



MATERIALS

- HOUSING : THERMOPLASTIC (UL 94V-0).
- TERMINAL : PHOSPHOR BRONZE
- SHELL : STAINLESS STEEL.

Finish:

- Finish: CONTACT: PLATED GOLD IN MATING AREA ;
GOLD PLATED ON SOLDER BALLS ;
NICKEL UNDER PLATED OVERALL
- SHELL: NICKEL UNDER PLATED SURFACE LAYER

SPECIFICATION

- CURRENT RATING : 0.5 A. MAX.
- DIELECTRIC WITHSTANDING VOLTAGE :
100V AC R.M.S. FOR 1 MINUTE.
- INSULATION RESISTANCE : 100MΩ MIN.AT 100V DC.
- CONTACT RESISTANCE : 30mΩ MAX.
- OPERATING TEMPERATURE : -30°C TO +85°C.

KSD 科斯达电子科技有限公司
SWITCH CONNECTOR KSD ELECTRONIC TECHNOLOGY Co., LTD
全球 互联零组件制造企业

TOLERANCE UNLESS OTHERWISE STATED :
Up to 5 ±0.2
Above 5 ~ 15 ±0.3
Above 15 ~ 30 ±0.4
Above 30 ~ 50 ±0.5
Angle ±0.3

3RD. ANGEL'S

UNITS MM

DRAWN BY: Jack Lu
DATE: 06/12/15
CHECKED BY: Jacky Chen
DATE: 06/12/15
APPROVED BY: Tony Kao
DATE: 06/12/15

MAT'L	TITLE	CONNECTOR
FINISH	MODLE	SIM CARD SOCKET 1.8H 6PIN PH2.54mm
SCALE 1:1	DWG NO.	SIM-5110607S-S312
SHEET NO. 1 of 1	PART NO.	SIM-5110607S-S312

ITEM NO.	DESCRIPTION	DRAWN	DATE