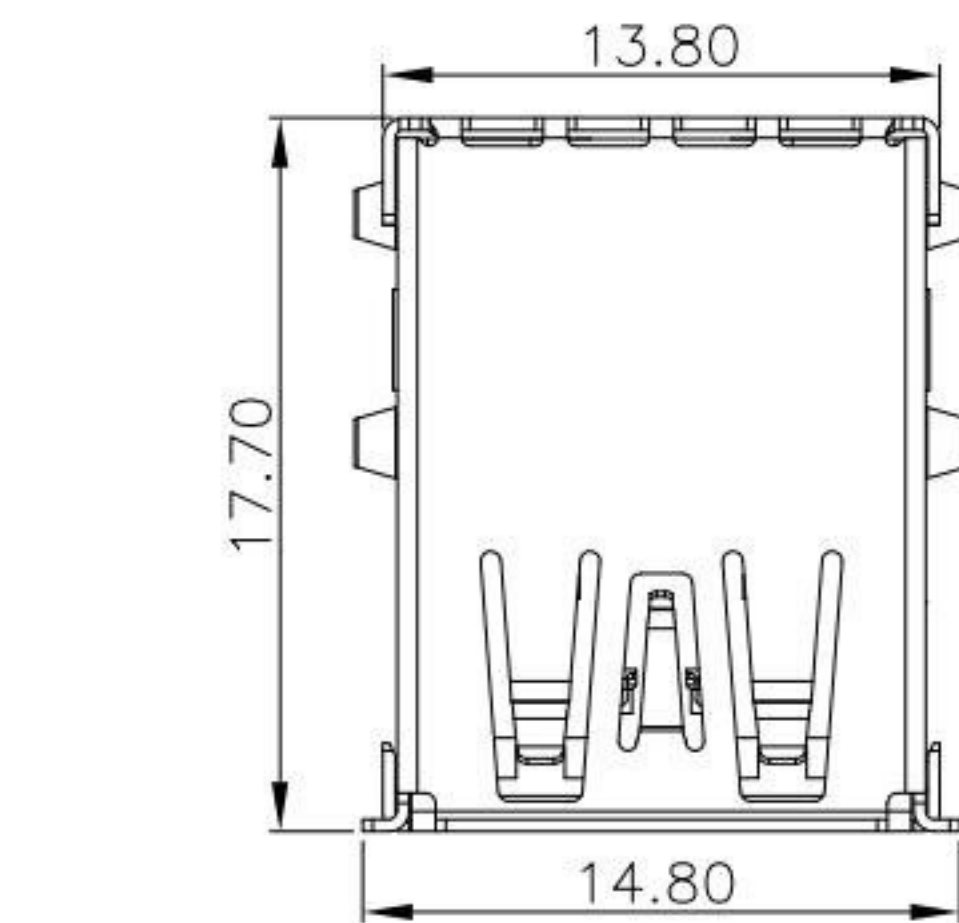
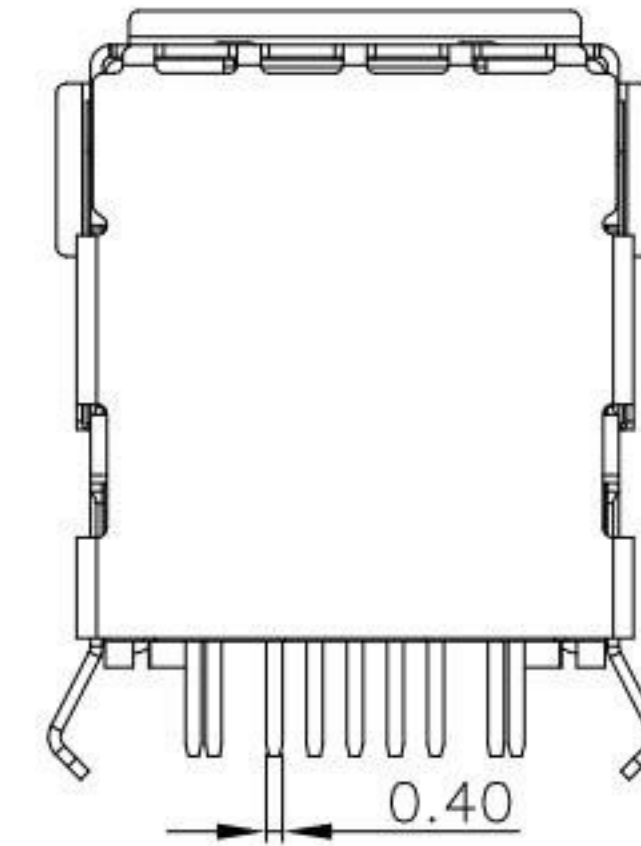
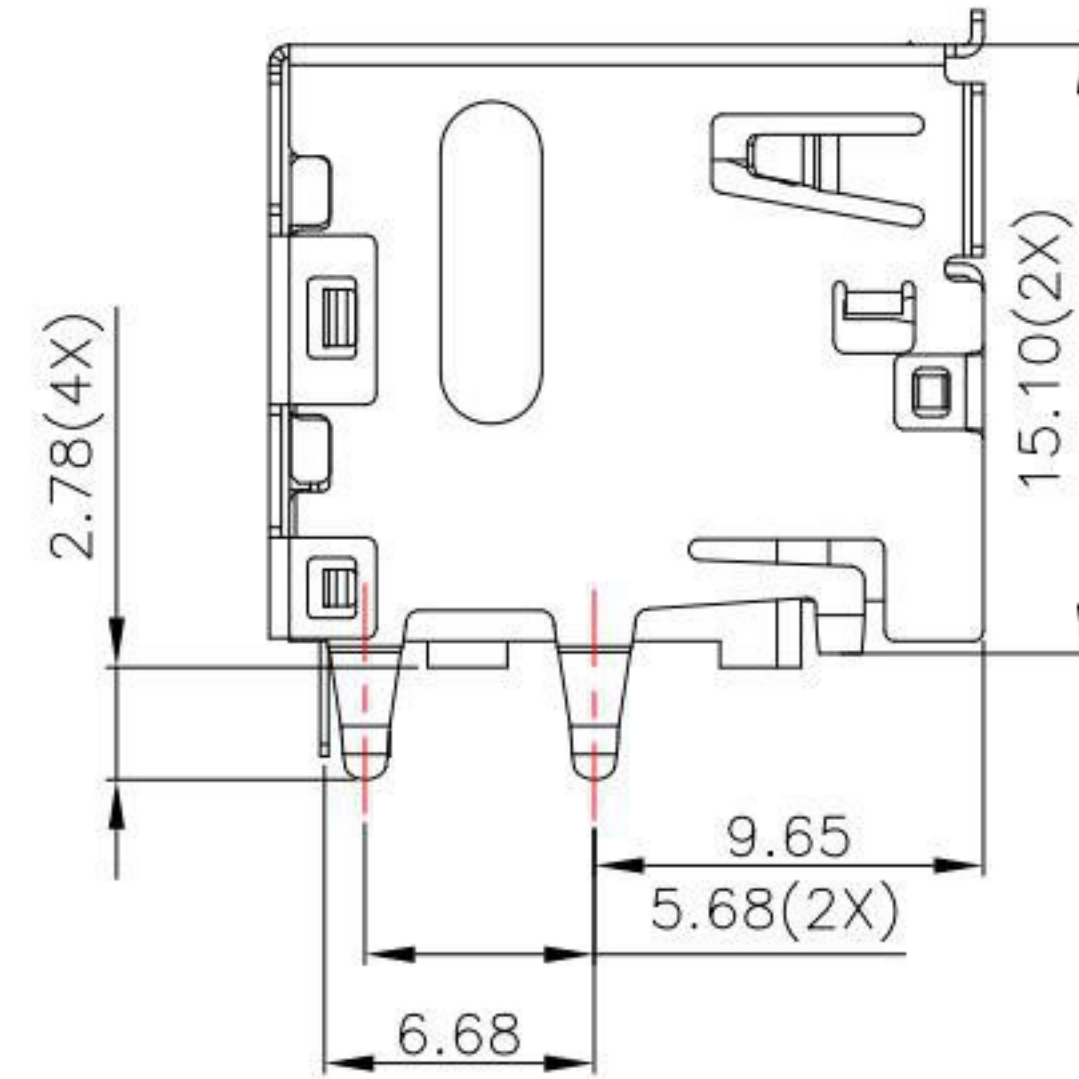
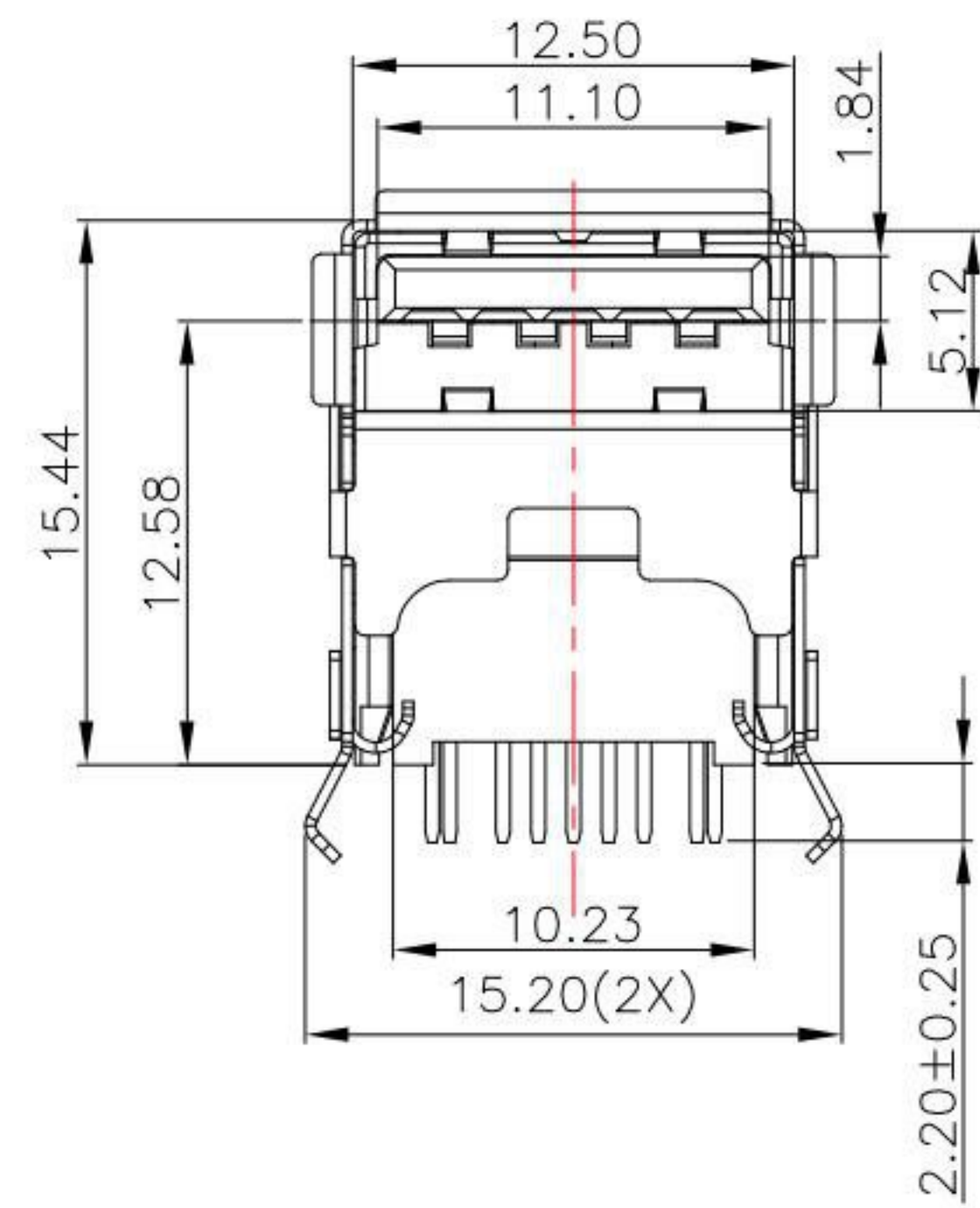
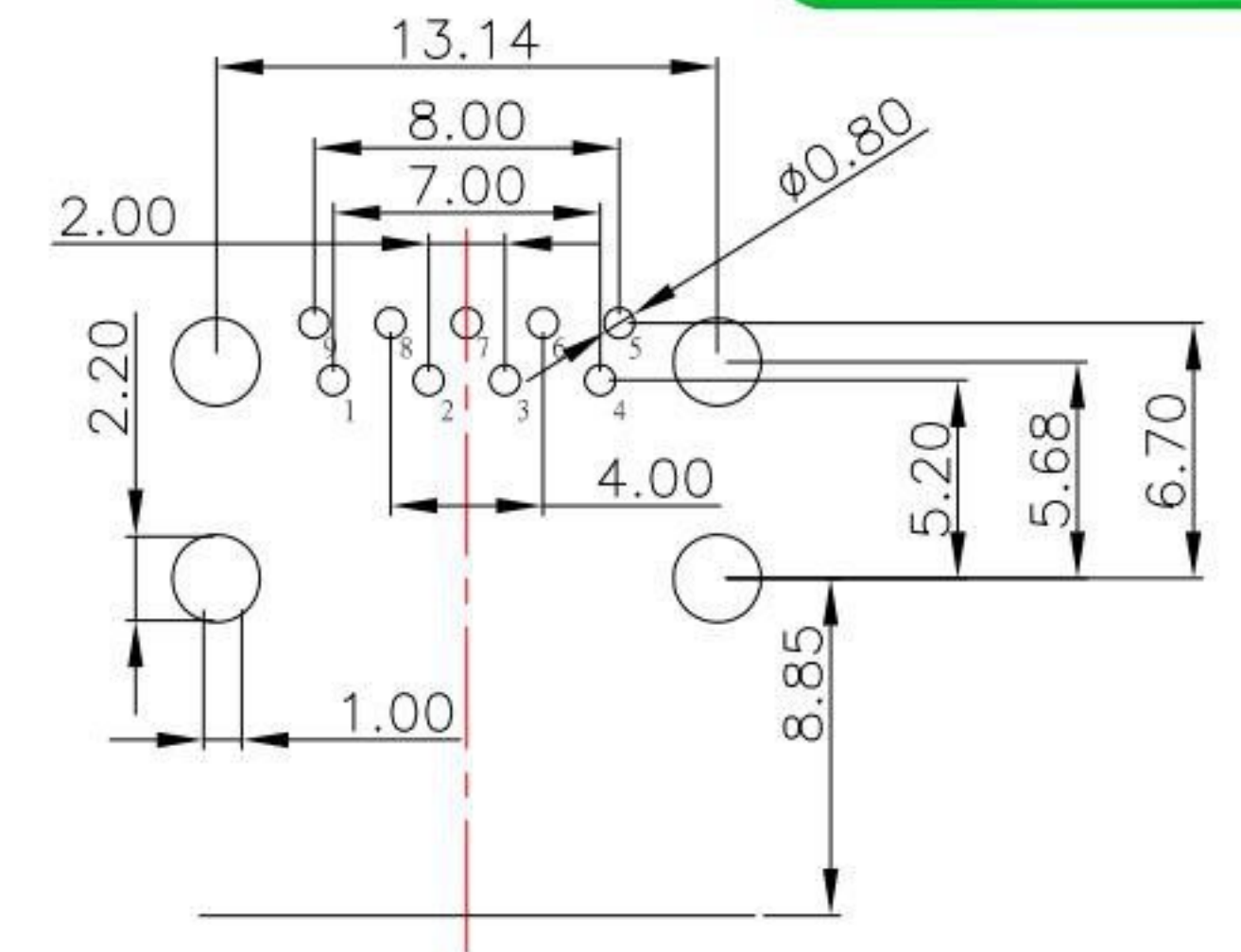
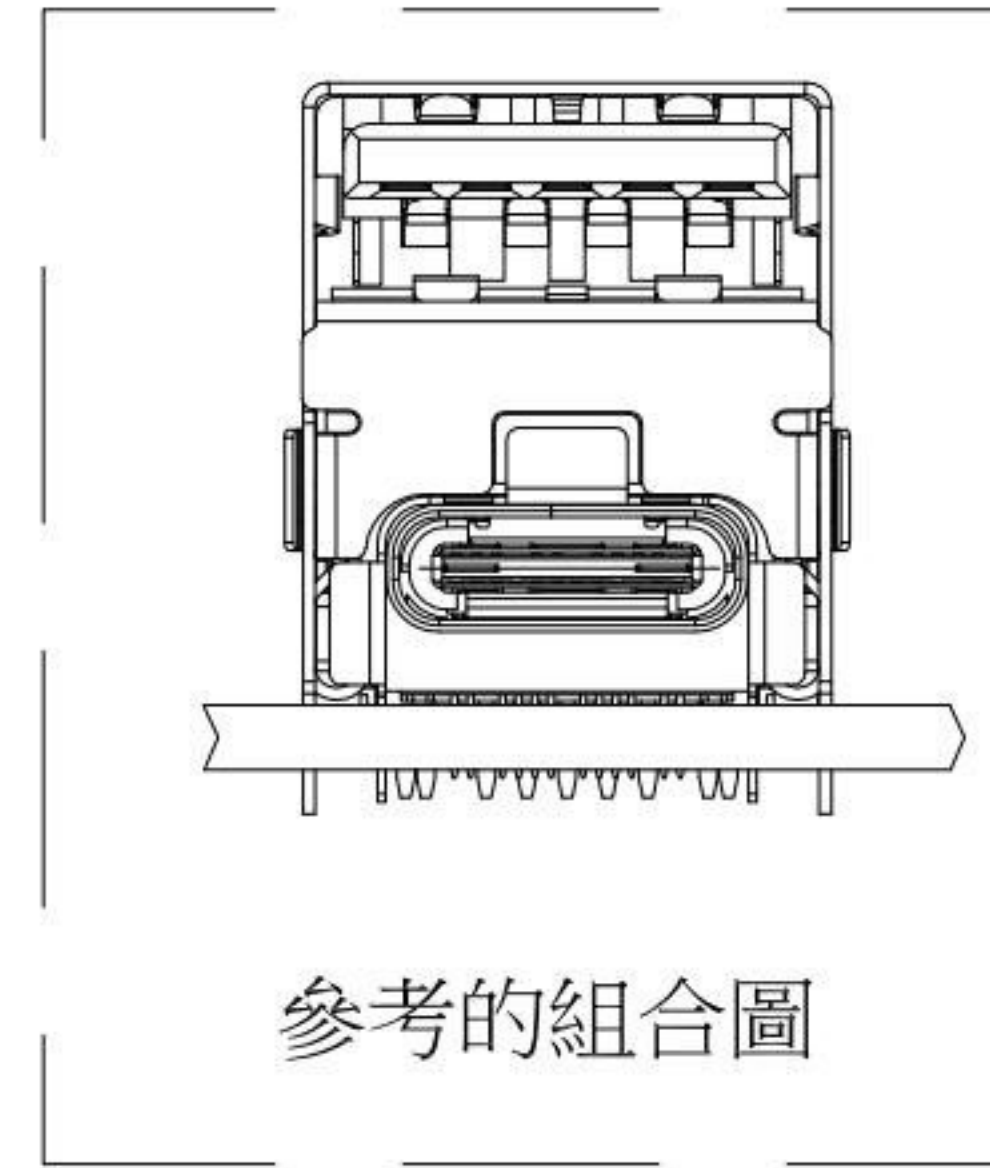




# SUA-110H15-30x-S242

鍍層厚度:

Blank	: 1u"
2	: 15u"
3	: 30u"



Pin #	SIGNAL NAME
1	VBUS
2	D-
3	D+
4	GND
5	StdA_SSRX-
6	StdA_SSRX+
7	GND_DRAIN
8	StdA_SSTX-
9	StdA_SSTX+
Shell	Shield

NOTE:

1.MATERIAL:

- 1.1 Housing: PA9T
- 1.2 Contact: PHOSPHOR BRONZE
- 1.3 Shell: SUS

2.Finish:

- 2.1 Contact: Plated Gold in Mating Area ;  
Tin Plated on Solder Balls ;  
Nickel under plated overall
- 2.2 Shell: Nickel under Plated surface layer

3.SPECIFICATION:

- 3.1 Current Rate: 1.8 A
- 3.2 insulator Resistance: 100MΩ Min
- 3.3 Dielectric Strength: 100V AC
- 3.4 Contact Resistance: 30mΩ Max
- 3.5 Operation Temperature: -40°C ~ +85°C
- 3.6 Insertion Force: 35 N
- 3.7 Extraction Force: 10 N

**KSD** 科斯达电子科技有限公司  
 SWITCH CONNECTOR KSD ELECTRONIC TECHNOLOGY Co., LTD  
 全球 互联零组件制造企业

TOLERANCE UNLESS OTHERWISE STATED:	Up to 5 ±0.2	Above 5 ~ 15 ±0.3	Above 15 ~ 30 ±0.4	Above 30 ~ 50 ±0.5	Angle ±0.3
	3RD. ANGEL'S				
	UNITS	MM			

DRAWN BY:	DATE	MAT'L	TITLE	CONNECTOR
Jack Lu	04/22/22		MODLE	USB3.0+TYPEC 彎腳 H=15.44mm
CHECKED BY:	DATE	FINISH	DWG NO.	SUA-110H15-30x-S242
Jacky Chen	04/22/22		PART NO.	SUA-110H15-30x-S242
APPROVED BY:	DATE	SCALE	SHEET NO.	1 of 1
Tony Kao	04/22/22	1 : 1		

ITEM NO.	DESCRIPTION	DRAWN	DATE