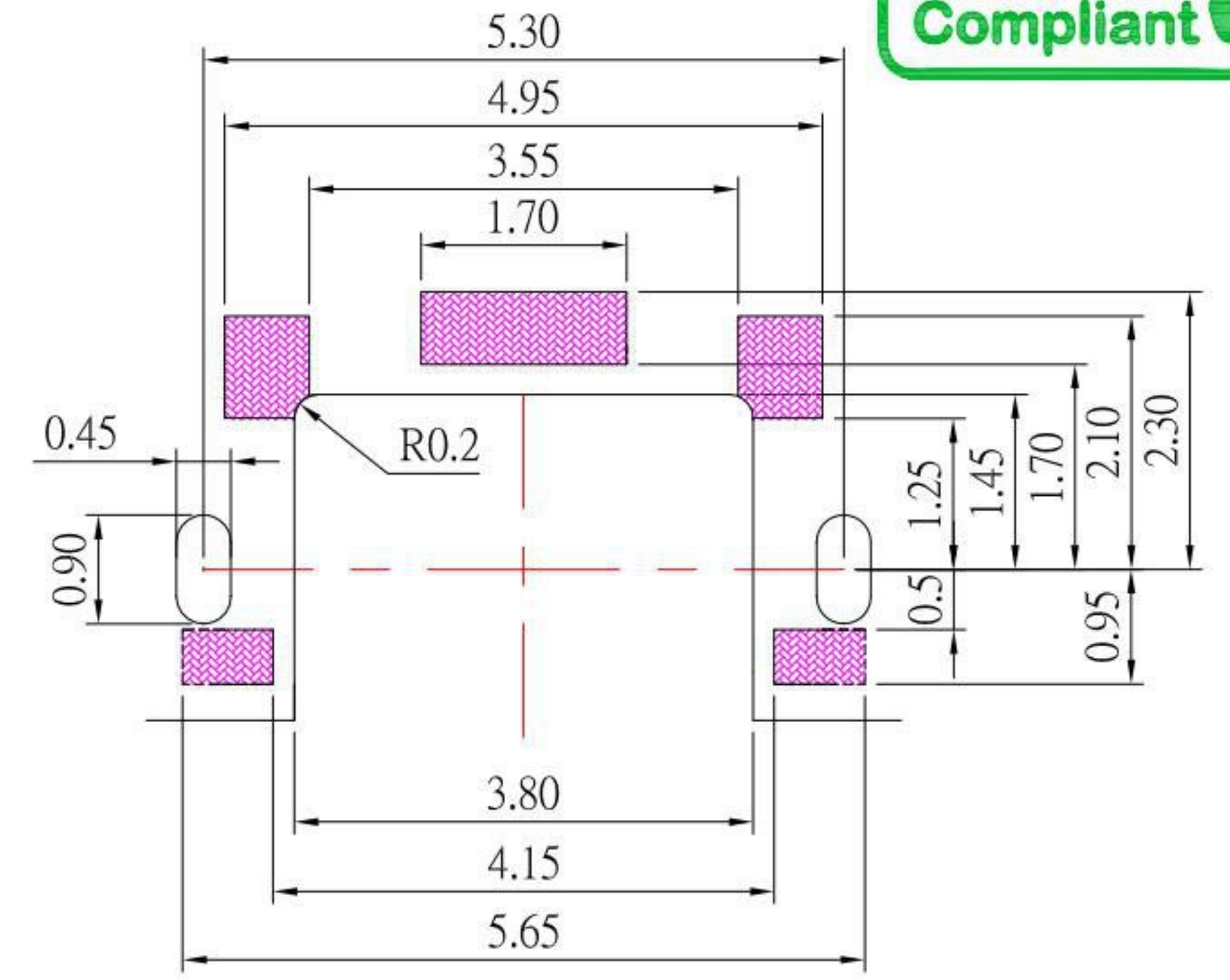
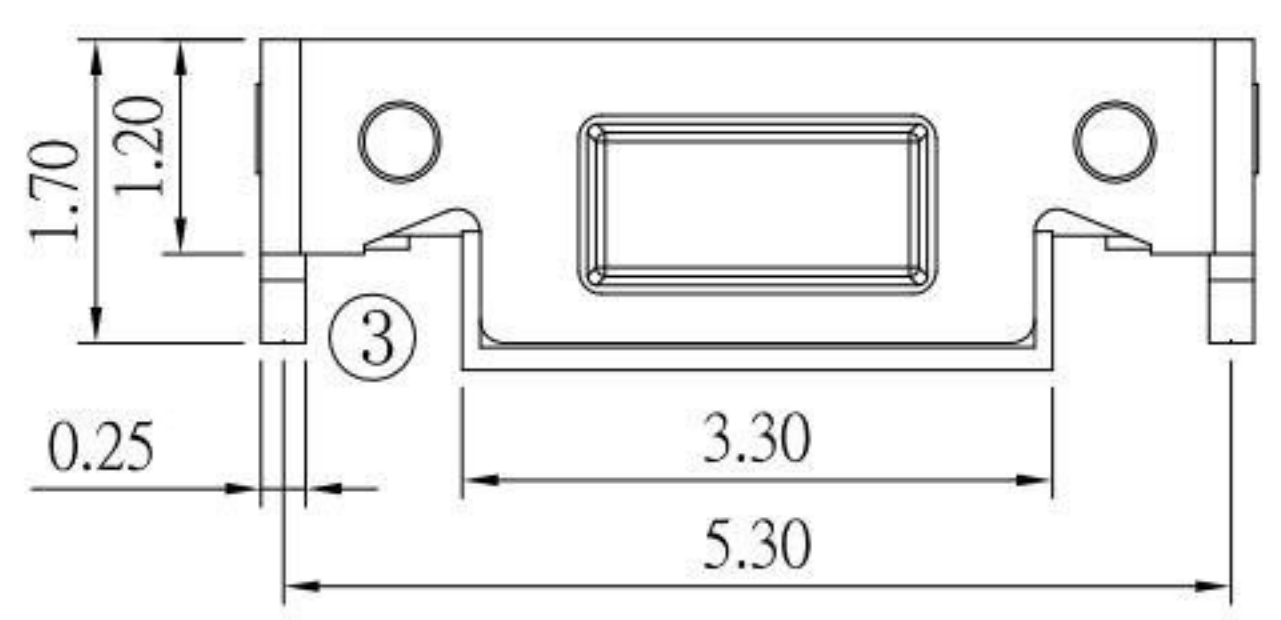
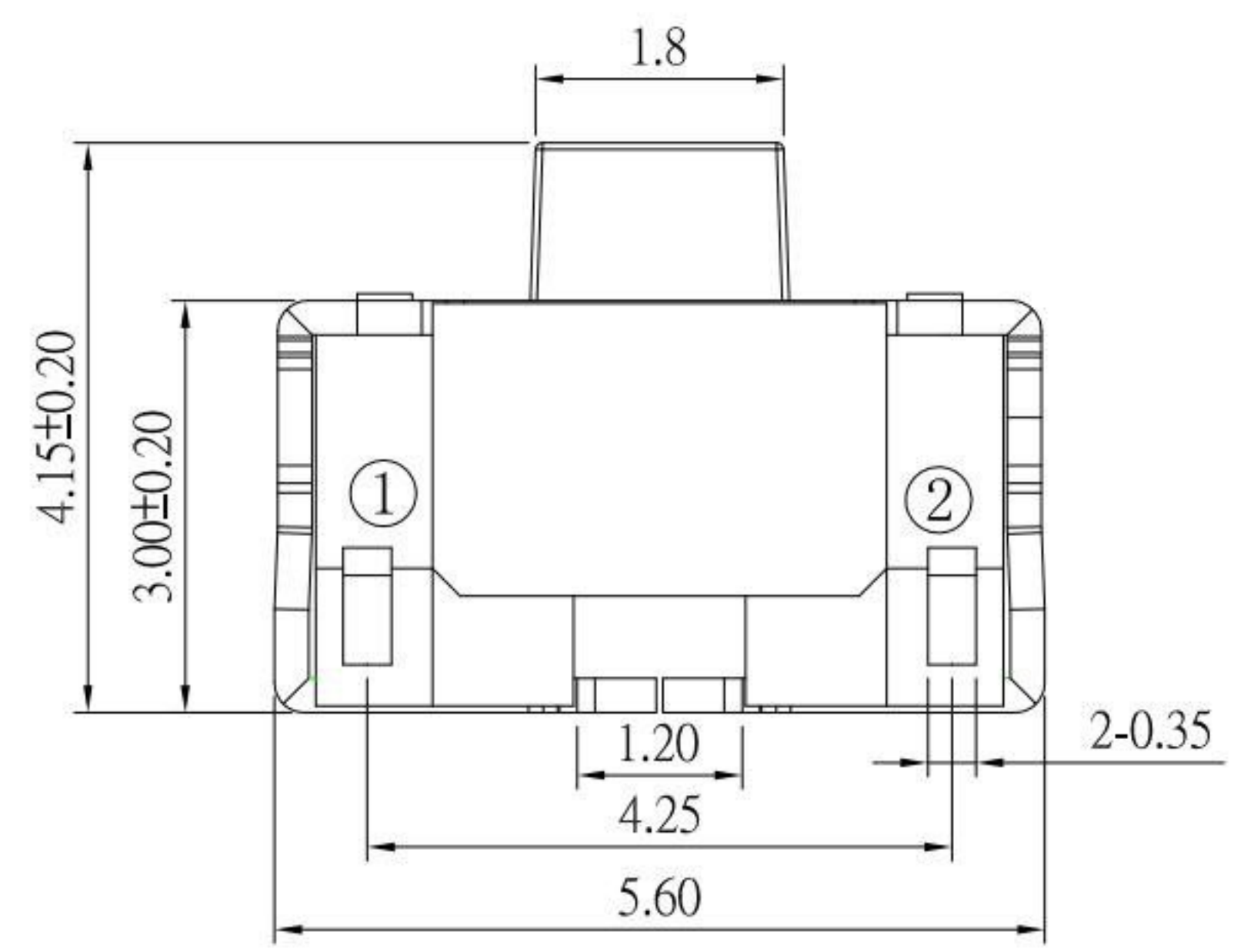
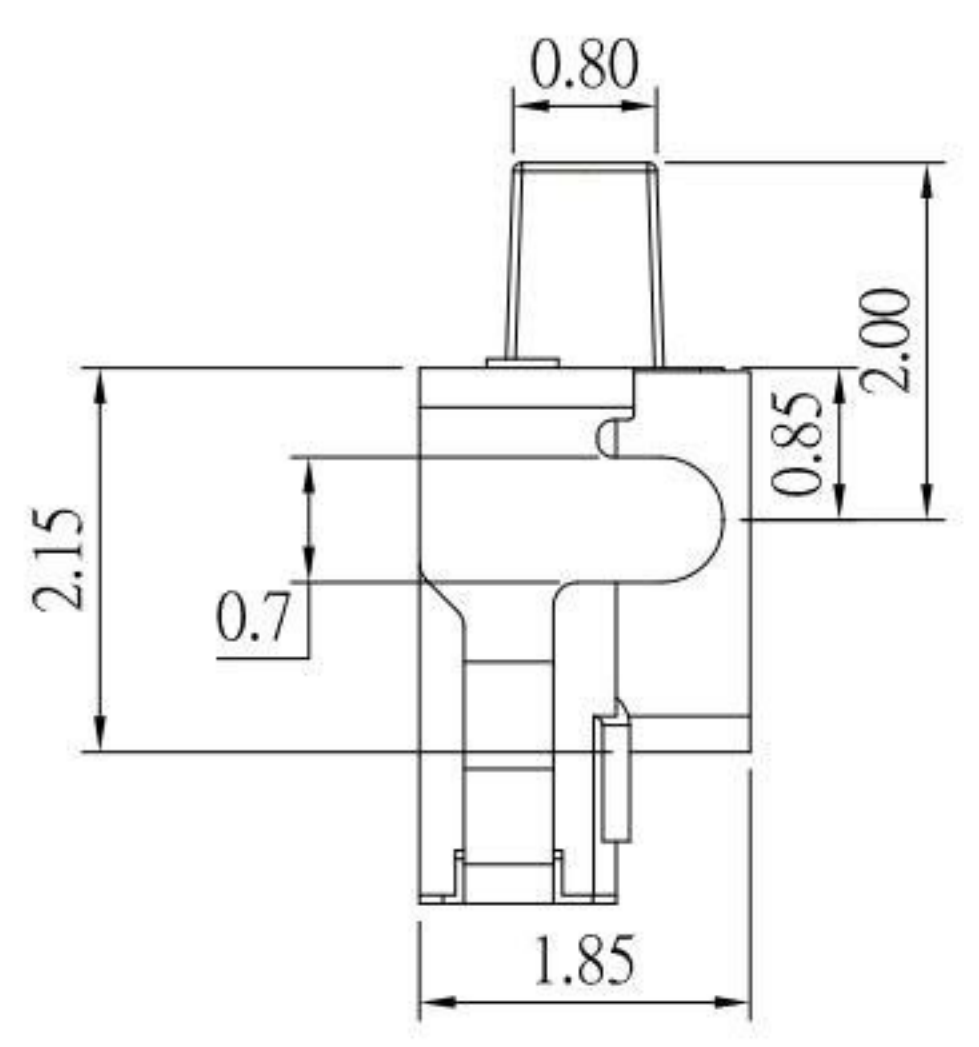


CIRCUIT DIAGRAM



P.C.B LAND PATTERN



SPECIFICATIONS

Rating	50mA, 12V DC
Insulation Resistance	50MΩ Min.
Dielectric Withstanding Voltage	AC 250 V
Contact Resistance	100mΩ Max.
Operating Force	160 ± 40gf
Travel	0.2 ± 0.1mm
Operating Life	50,000 cycles

NO.	DESCRIPTION	QTY	MATERIAL	PLATING
E	THERMINAL	2	PHOSPHOR BRONZE	Ag plated
D	CONTACT	3	STAINLESS STEEL	Ag plated
C	COVER	1	PHOSPHOR BRONZE	Ag plated
B	BASE	1	LCP	White
A	STEM	1	LCP	White

ITEM NO.	DESCRIPTION	DRAWN	DATE
5	新增Travel	Jack	022323
4	更新CONTACT數量	Jack	011022
3	更新規格	Jack	111921
2	新增COVER 鍍層	Jack	102121
1	更新材質顏色	Jack	102318

KSD 科斯达电子科技有限公司
 SWITCH CONNECTOR KSD ELECTRONIC TECHNOLOGY Co., LTD
 全球 互聯零組件製造企業

TOLERANCE UNLESS OTHERWISE STATED:
 Up to 5 ±0.2
 Above 5 ~ 15 ±0.3
 Above 15 ~ 30 ±0.4
 Above 30 ~ 50 ±0.5
 Angle ±0.3°

3RD. ANGEL'S

UNITS MM

DRAWN BY:	DATE	MAT'L	TITLE	SWITCH
Jack Lu	02/23/23		MODLE	TACT SWITCH
CHECKED BY:	DATE	SCALE	DWG NO.	TS-A28- 2-S246
Jacky Chen	02/23/23	1 : 1	PART NO.	TS-A28- 2-S246
APPROVED BY:	DATE	SHEET NO.		
Tony Kao	02/23/23	1 of 1		

SIZE	A4
VER	R5