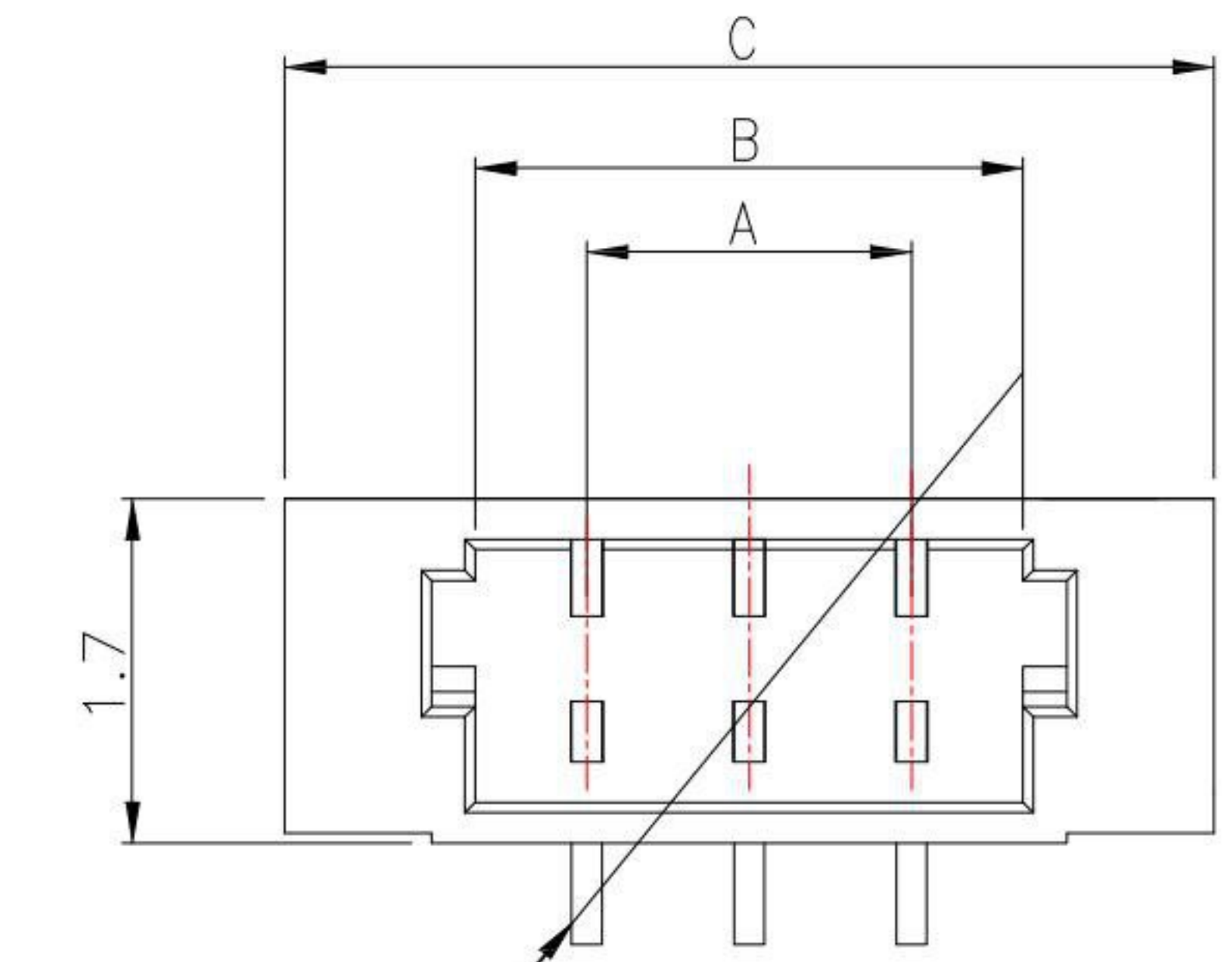
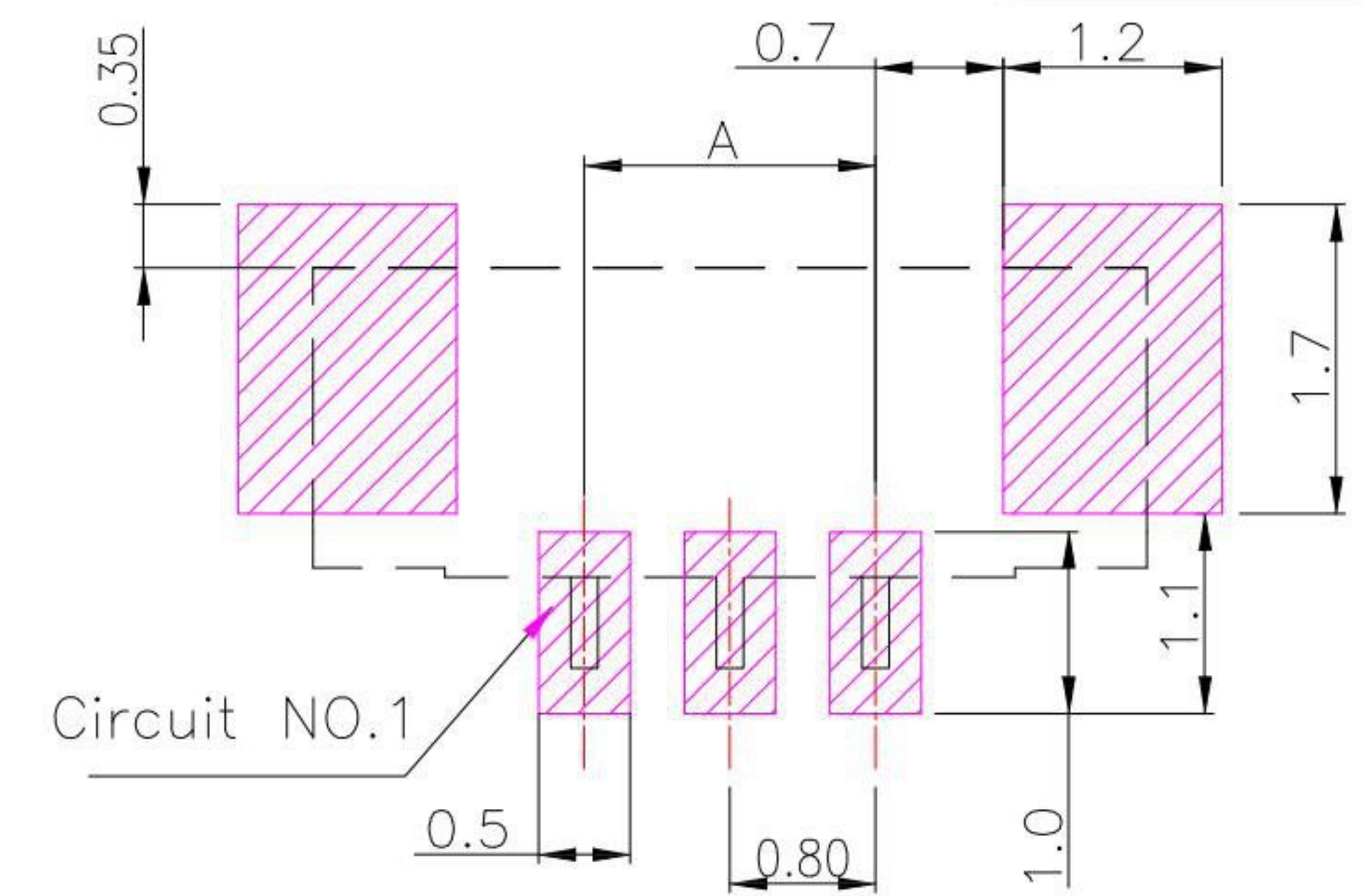
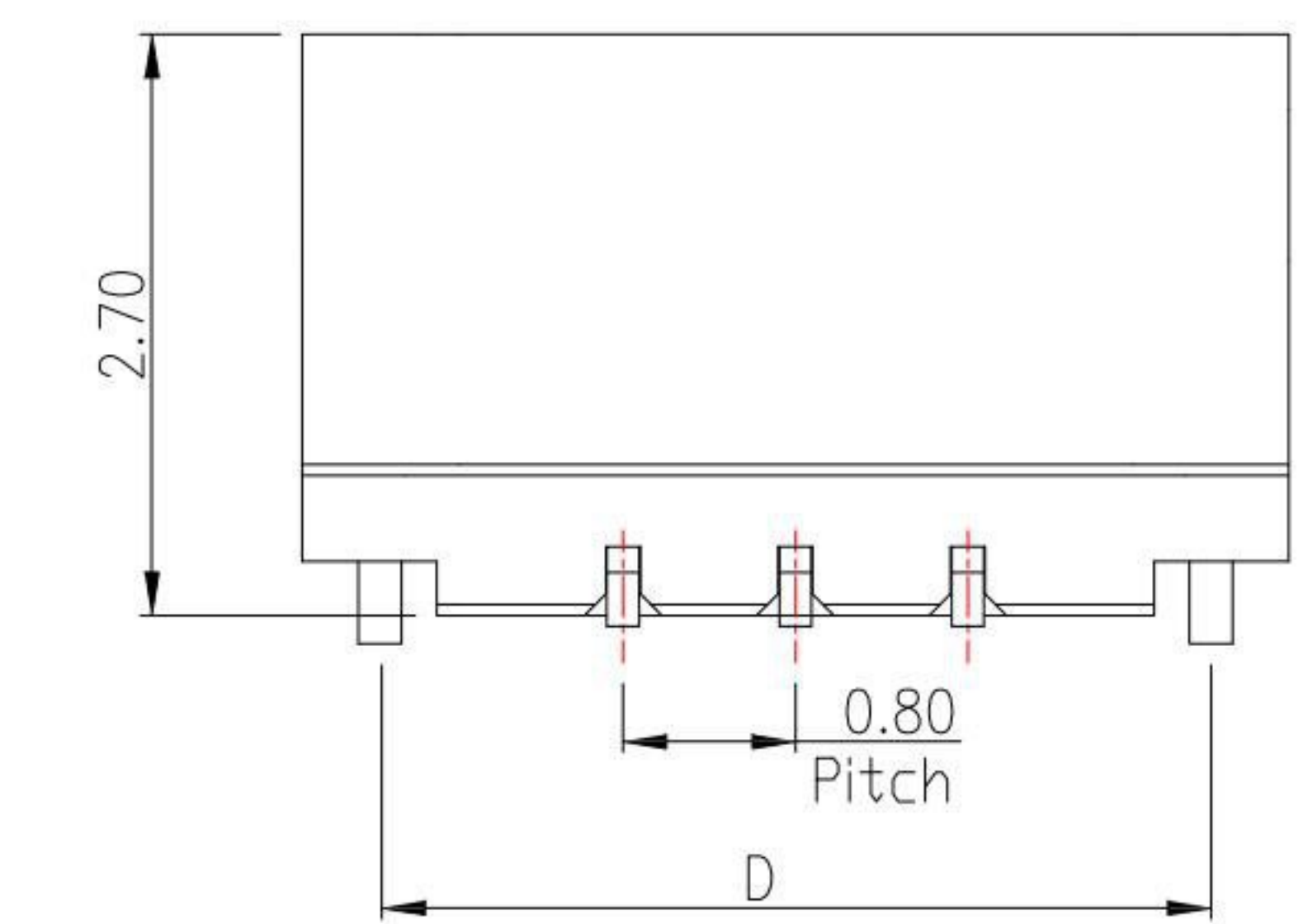
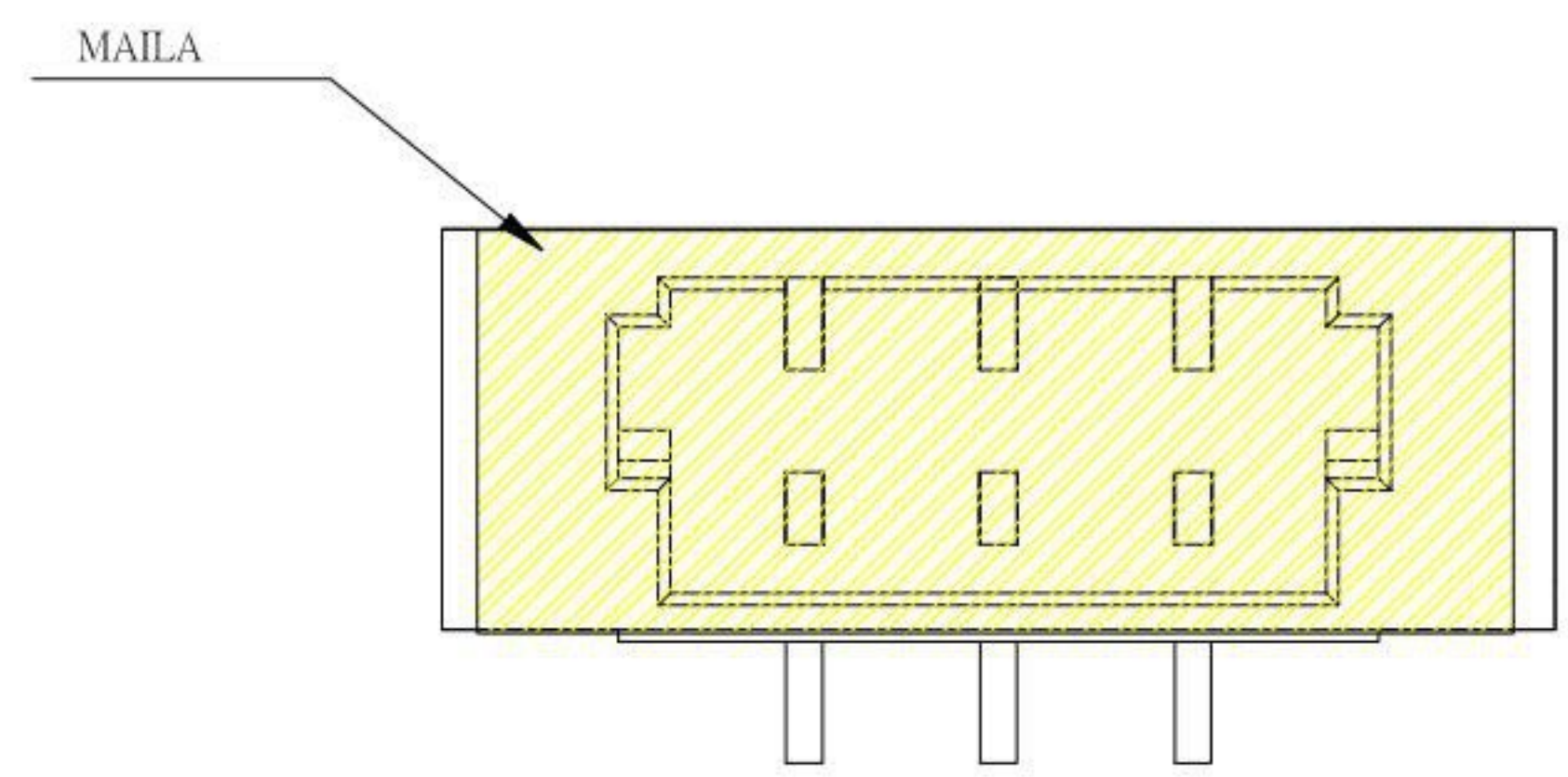


三角記號凸出0.03



Circuit NO.1



P.C.B LAYOUT MOUNTING PATTERN

SPECIFICATIONS

- 1.Current rating : 0.7A AC , DC
 - 2.Voltage rating : 30V AC , DC
 - 3.Temperature rating : -25°C ~ +85°C
 - 4.Insulation resistance : 100MΩ min.
 - 5.Withstand voltage : 200V AC / minute
 - 6.Contact resistance : 20mΩ/Max
- Material:
- 1.Housing : LCP
 - 2.Contact : Brass,Tin Plated over all Nickel
 - 3.Fitting Nail : Brass,Tin Plated over all Nickel

PART NO.	DIMA	DIMB	DIMC	DIMD
02	0.80	1.90	3.78	3.04
03	1.60	2.70	4.58	3.84
04	2.40	3.50	5.38	4.64
05	3.20	4.30	6.18	5.44
06	4.00	5.10	6.98	6.24
07	4.80	5.90	7.78	7.04
08	5.60	6.70	8.58	7.84
09	6.40	7.50	9.38	8.64
10	7.20	8.30	10.18	9.44
12	8.80	9.90	11.78	11.04
14	10.40	11.50	13.38	12.64
16	12.00	13.10	14.98	14.24
18	13.60	14.70	16.58	15.84
20	15.20	16.30	18.18	17.44

KSD 科斯达电子科技有限公司
 SWITCH CONNECTOR KSD ELECTRONIC TECHNOLOGY Co., LTD
 全球 互聯零組件 制造企业

TOLERANCE UNLESS OTHERWISE STATED :
 Up to 5 ±0.2
 Above 5 ~ 15 ±0.3
 Above 15 ~ 30 ±0.4
 Above 30 ~ 50 ±0.5
 Angle ±0.3

3RD. ANGEL'S

UNITS MM

DRAWN BY:	DATE	MAT'L	TITLE	CONNECTOR
Jack Lu	03/01/22			
CHECKED BY:	DATE	FINISH	MODLE	WAFER 0.8mm . SMT 180度
Jacky Chen	03/01/22			
APPROVED BY:	DATE	SCALE	DWG NO.	WF-0800VSxx-S304
Tony Kao	03/01/22	1 : 1		
		SHEET NO.	PART NO.	WF-0800VSxx-S304
		1 of 1		

ITEM NO.	DESCRIPTION	DRAWN	DATE
3	更新圖面	Jack	030122
2	更新PIN選項	Jack	122121
1	更新尺寸和SPEC及材質	Jack	052721