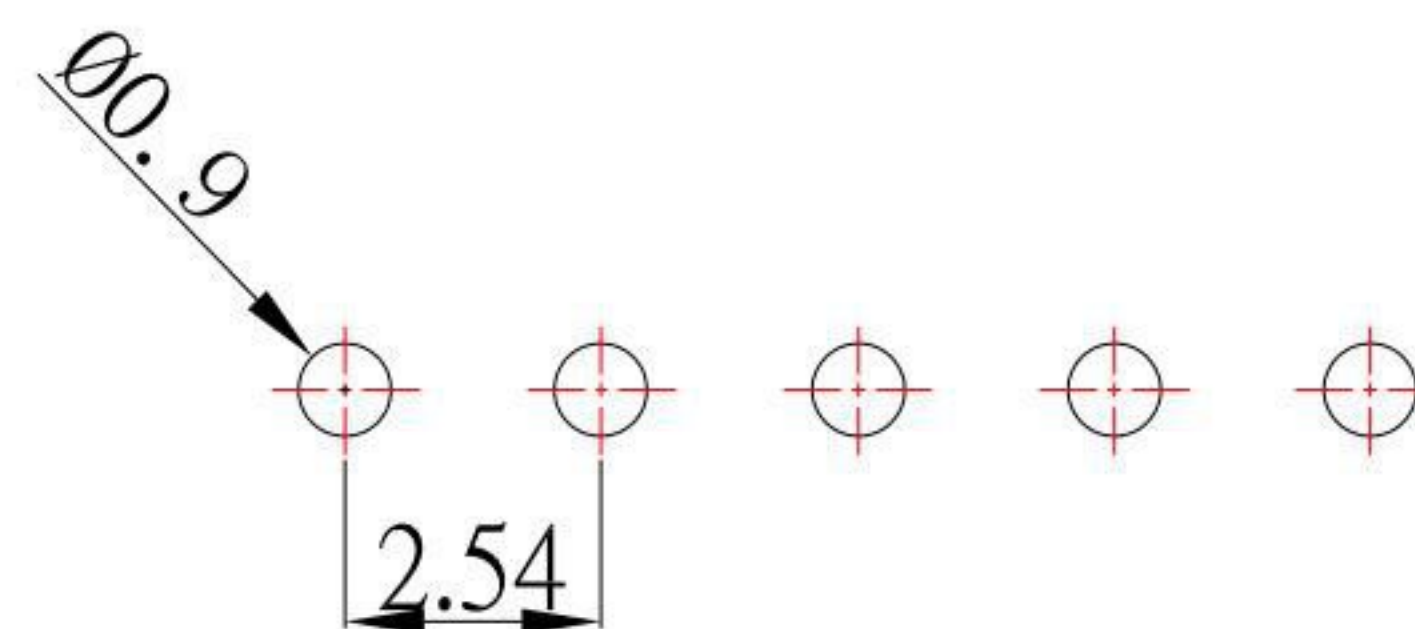


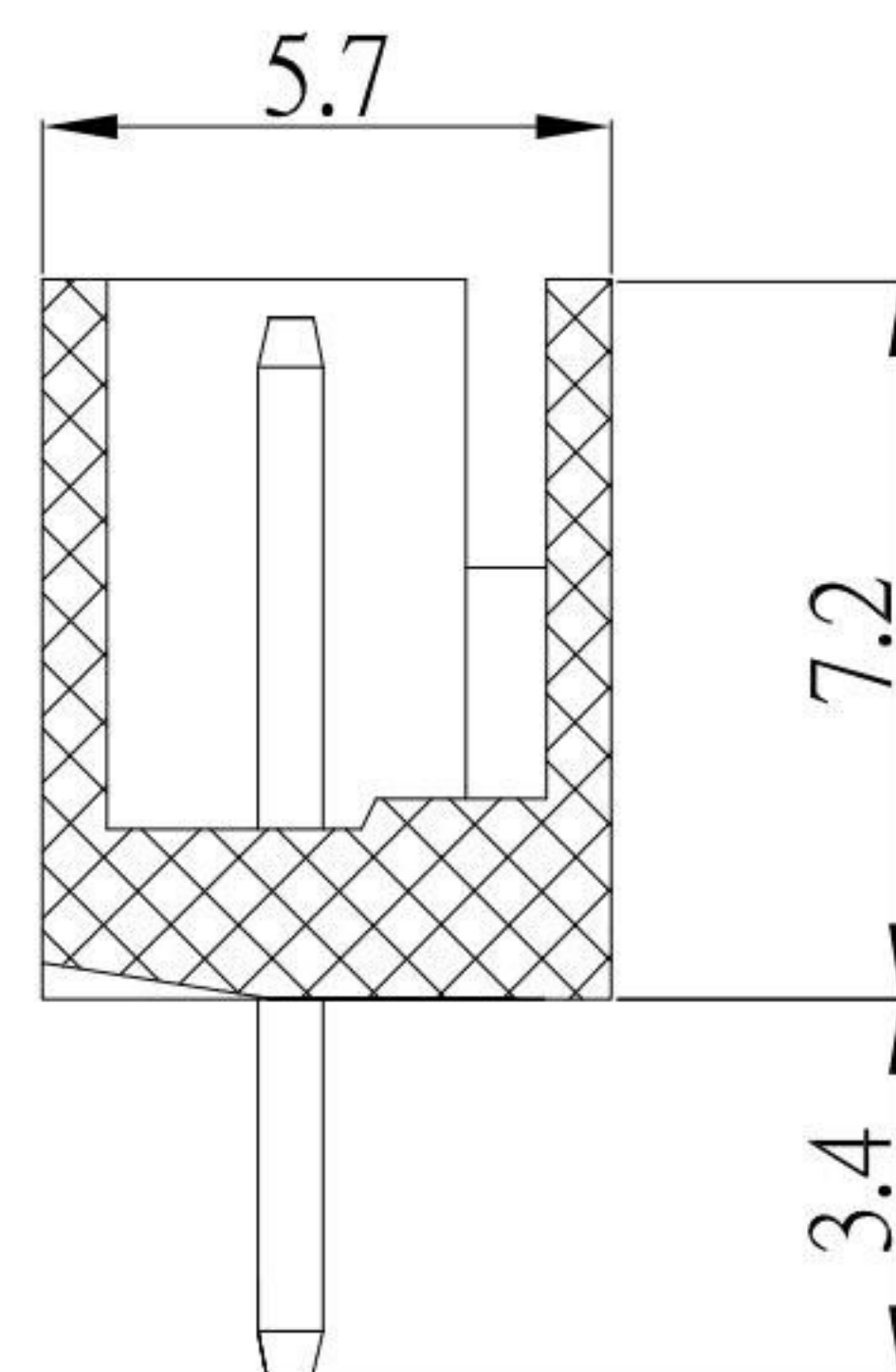
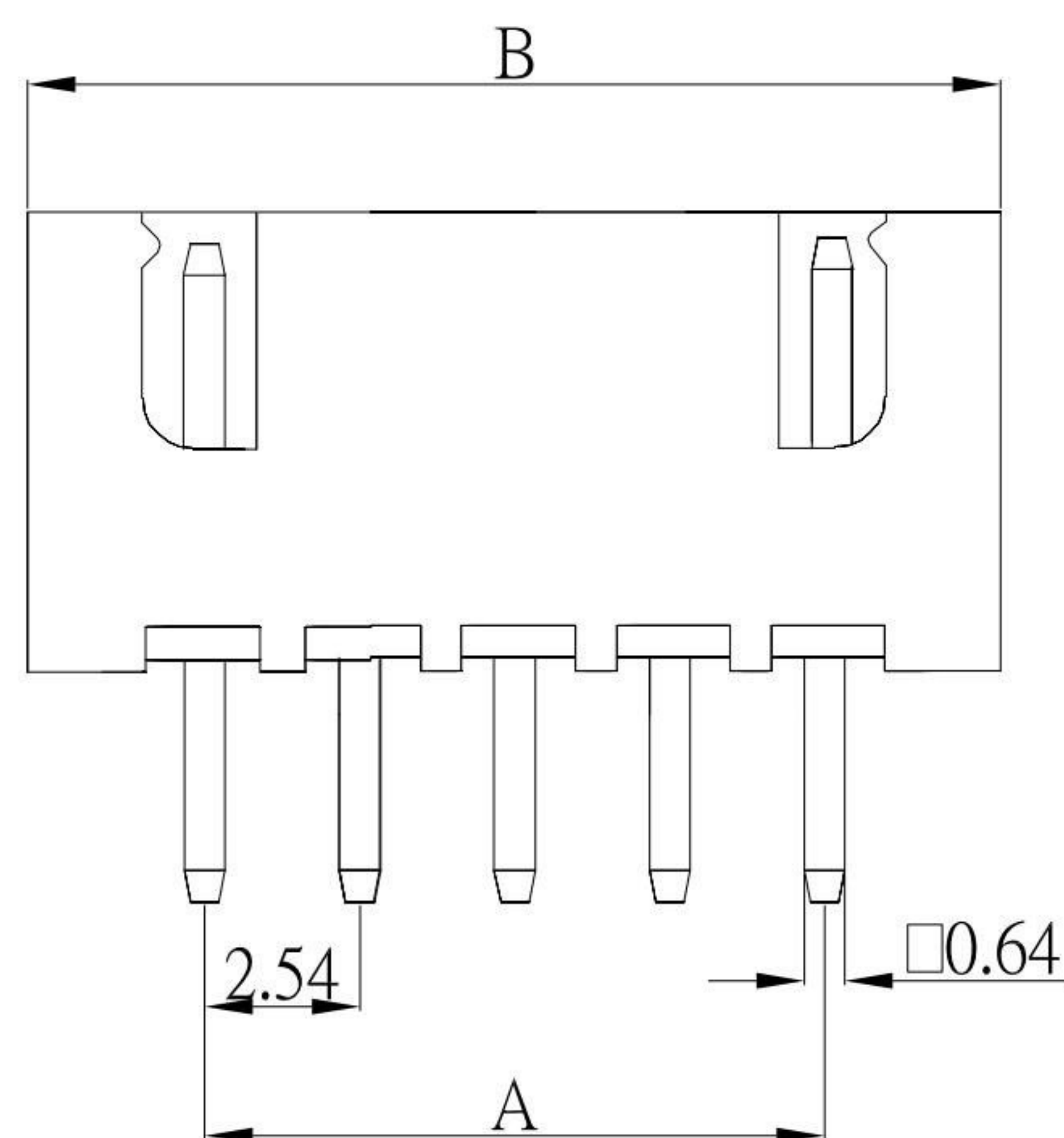
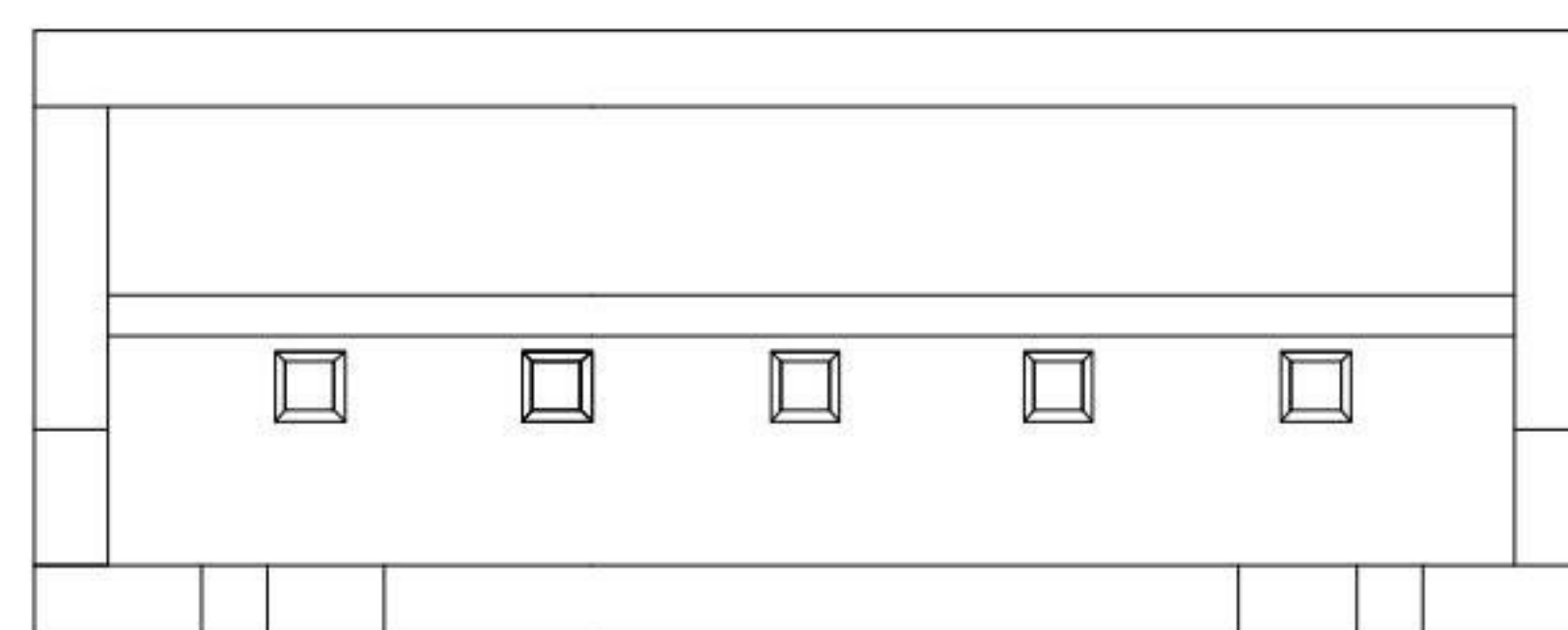


SPECIFICATIONS

Current rating : 3.0A AC , DC
 Voltage rating : 250V AC , DC
 Temperature rating : -25°C ~ +85°C
 Insulation resistance : 1,000 MΩ min.
 Withstand voltage : 1,000V AC/minute
 Contact resistance : 20 mΩ/Max



P.C.B LAYOUT MOUNTING PATTERN

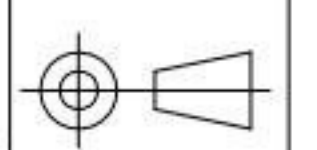


Pin	A	B
2	2.5	7.5
3	5.0	10.0
4	7.5	12.5
5	10.0	15.0
6	12.5	17.5
7	15.0	20.0
8	17.5	22.5
9	20.0	25.0
10	22.5	27.5
11	25.0	30.0
12	27.5	32.0

KSD 科斯达电子科技有限公司
 SWITCH CONNECTOR KSD ELECTRONIC TECHNOLOGY Co., LTD
 全球 互联零组件制造企业

TOLERANCE UNLESS OTHERWISE STATED:
 Up to 5 ±0.2
 Above 5 ~ 15 ±0.3
 Above 15 ~ 30 ±0.4
 Above 30 ~ 50 ±0.5
 Angle ±0.3

3RD. ANGEL'S



UNITS MM

DRAWN BY:	DATE	MAT'L	TITLE	CONNECTOR
Jack Lu	03/28/17		MODLE	WAFER 2.54 DIP 180度
CHECKED BY:	DATE	FINISH	DWG NO.	WF-2547VDxx-S304
Jacky Chen	03/28/17		SCALE	1 : 1
APPROVED BY:	DATE	SHEET NO.	PART NO.	WF-2547VDxx-S304
Tony Kao	03/28/17	1 of 1		

ITEM NO.	DESCRIPTION	DRAWN	DATE

SIZE A4
 VER R